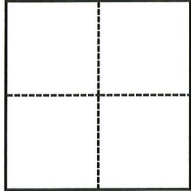


CORNER RECORD

Agency Index CR-23-074
Document Number _____

City of Escalon County of San Joaquin, California
Brief Legal Description Northeast quarter (NE 1/4) Section 4, T.2S., R.9E., M.D.B.& M.



CORNER TYPE

- Government Corner
- Meander
- Rancho
- Control
- Property
- Other

Date of Survey October 27, 2022

COORDINATES (Optional)

N. _____ E. _____
 Elevation _____
 Units Metric U.S. Survey Foot
 Horizontal Datum _____
 Zone _____ Epoch Date _____
 Vertical Datum _____
 Complies with Public Resources Code §§8801-8819
 Complies with Public Resources Code §§8890-8902

PLS Act Ref.: 8765(d) 8771 8773 Other:
 Corner/Monument: Left as found Established Rebuilt Pre-Construction
 Found and tagged Reestablished Referenced Post-Construction

Narrative of corner identified and monument as found, set, reset, replaced, or removed:
 See sheet #2 for description(s):



SURVEYOR'S STATEMENT

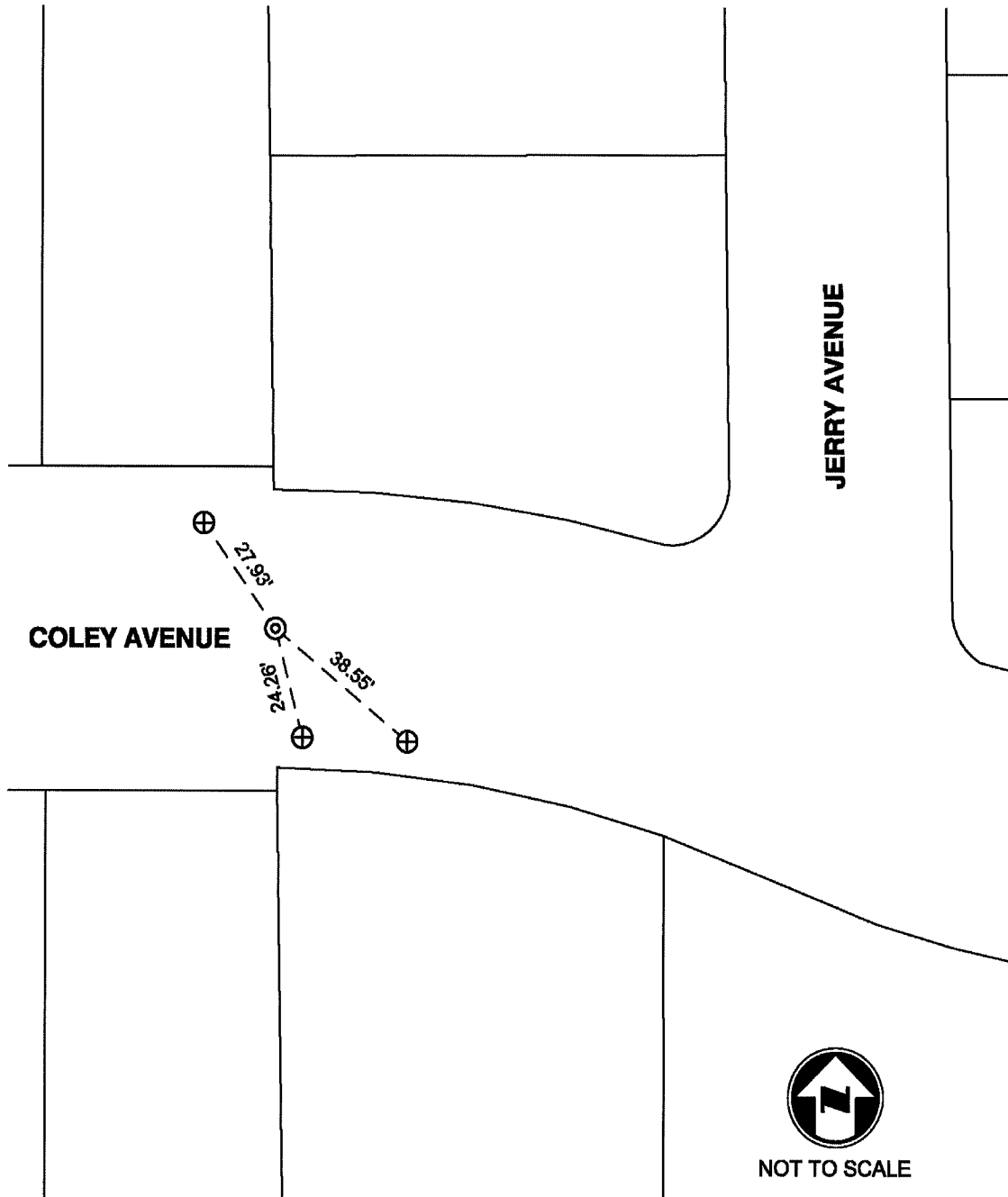
This Corner Record was prepared by me or under my direction in conformance with
 the Professional Land Surveyors' Act on February 1, 2023
 Signed Douglas F. Banks P.L.S. or R.C.E. No. 8159

COUNTY SURVEYOR'S STATEMENT

This Corner Record was received February 15, 2023
 and examined and filed March 2, 2023
 Signed James E. Hart P.L.S. or R.C.E. No. 8657
 Title County Surveyor



County Surveyor's Comment



NOTES:

- ⊙ SET MONUMENT: 3/4" X 24" IRON PIPE WITH PLASTIC CAP STAMPED LS 8159, IN MONUMENT WELL.
- ⊕ FOUND SAW CUT "+" IN CONCRETE ON EDGE OF WALK, PER CR-22-258.
- CR CORNER RECORD, SAN JOAQUIN COUNTY SURVEYOR'S RECORD