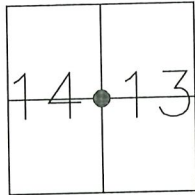


# CORNER RECORD

Agency Index CR-23-067  
Document Number \_\_\_\_\_

City of \_\_\_\_\_ County of San Joaquin, California

Brief Legal Description Henry Road @ Hall Avenue and @ River Road



T2S R9E  
MDB&M

## CORNER TYPE

Government Corner ☒ Control ☐  
Meander ☐ Property ☐  
Rancho ☐ Other ☐

Date of Survey November 2, 2021

## COORDINATES (Optional)

N. \_\_\_\_\_ E. \_\_\_\_\_

Elevation. \_\_\_\_\_

Units Metric ☐ U.S. Survey Foot ☒

Horizontal Datum \_\_\_\_\_

Zone \_\_\_\_\_ Epoch Date \_\_\_\_\_

Vertical Datum \_\_\_\_\_

☐ Complies with Public Resources Code §§8801-8819

☐ Complies with Public Resources Code §§8890-8902

PLS Act Ref.:

☐ 8765(d)

☒ 8771

☐ 8773

☐ Other:

Corner/  
Monument:

☒ Left as found

☐ Established

☐ Rebuilt

☒ Pre-Construction

☐ Found and tagged

☐ Reestablished

☐ Referenced

☐ Post-Construction

Narrative of corner identified and monument as found, set, reset, replaced, or removed:

☒ See sheet #2 for description(s):

## SURVEYOR'S STATEMENT

This Corner Record was prepared by me or under my direction in conformance with

the Professional Land Surveyor's Act on December 6, 2021

Signed James E. Hart P.L.S. or R.C.E. No. 8657

## COUNTY SURVEYOR'S STATEMENT

This Corner Record was received January 27, 2023

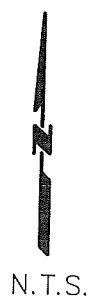
and examined and filed February 10, 2023

Signed James E. Hart P.L.S. or R.C.E. No. 8657

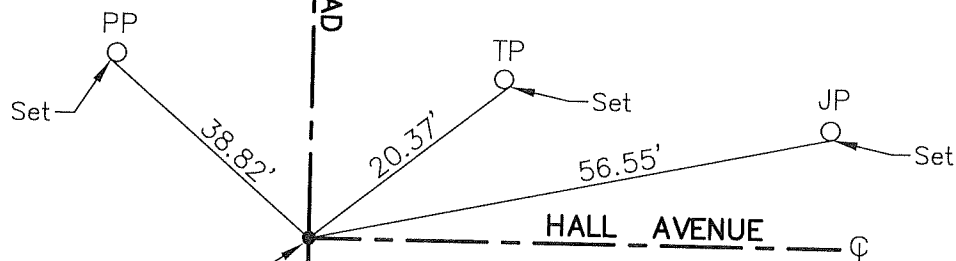
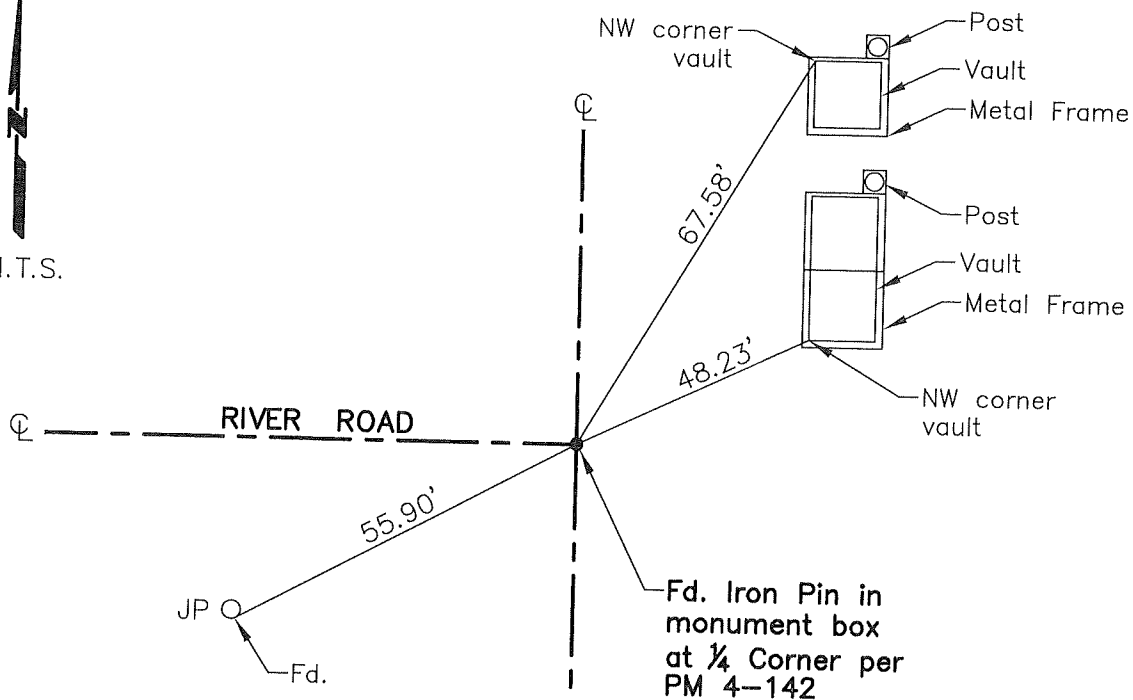
Title County Surveyor

County Surveyor's Comment





(FB. 713)



TR=Tree  
 MB=Mailbox  
 BM=Bench Mark  
 EP=Edge of Pavement  
 YL=Yellow Line  
 FH=Fire Hydrant  
 CR=Corner Record  
 FP=Fence Post  
 JP=Joint Pole  
 LP=Light Pole  
 PP=Power Pole  
 GP=Guy Pole  
 SP=Service Pole  
 TP=Telephone Pole  
 S.F.N.=Searched Found Nothing  
 N.T.S.=Not To Scale  
 M&P=Maps & Plats  
 PM=Parcel Map  
 RS=Record of Survey  
 FB=Field Book  
 N=North  
 SDI=Storm Drain Inlet  
 TOC=Top of Curb  
 PCC=Portland Cement Concrete

Set=Conc. Nail with Brass Washer stamped  
 "S.J. Co.", unless otherwise noted  
 Fd.=Found Conc. Nail with Brass Washer stamped  
 "S.J. Co.", unless otherwise noted  
 Note: Found Monuments are not tagged unless  
 otherwise noted.

"No attempt was made to verify the Monument(s)"