

CORNER RECORD

Agency Index

CR-23-065

Document Number

San Joaquin

California

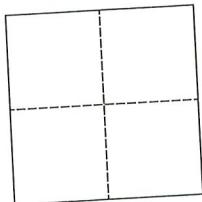
City of

County of

Brief Legal Description Kasson Road @ Greenwood RoadWithin Rancho El Pescadero

CORNER TYPE

COORDINATES (Optional)



Government Corner

☐

Control

☐

Meander

☐

Property

☐

Rancho

☐

Other

☒Date of Survey October 9, 2019

N.

E.

Elevation.

Units

Metric

☐

U.S. Survey Foot

☒

Horizontal Datum

Zone

Epoch Date

Vertical Datum

☐ Complies with Public Resources Code §§8801-8819☐ Complies with Public Resources Code §§8890-8902

PLS Act Ref.:

☐

8765(d)

☒

8771

☐

8773

☐

Other:

Corner/
Monument:☒

Left as found

☐

Established

☐

Rebuilt

☒

Pre-Construction

☐

Found and tagged

☐

Reestablished

☐

Referenced

☐

Post-Construction

Narrative of corner identified and monument as found, set, reset, replaced, or removed:

☒ See sheet #2 for description(s):

SURVEYOR'S STATEMENT

This Corner Record was prepared by me or under my direction in conformance with
the Professional Land Surveyor's Act on December 28, 2019

Signed

James E. Hart

P.L.S. or R.C.E. No.

8657

COUNTY SURVEYOR'S STATEMENT

This Corner Record was received January 27, 2023and examined and filed February 10, 2023

Signed

James E. Hart

P.L.S. or R.C.E. No.

8657

Title

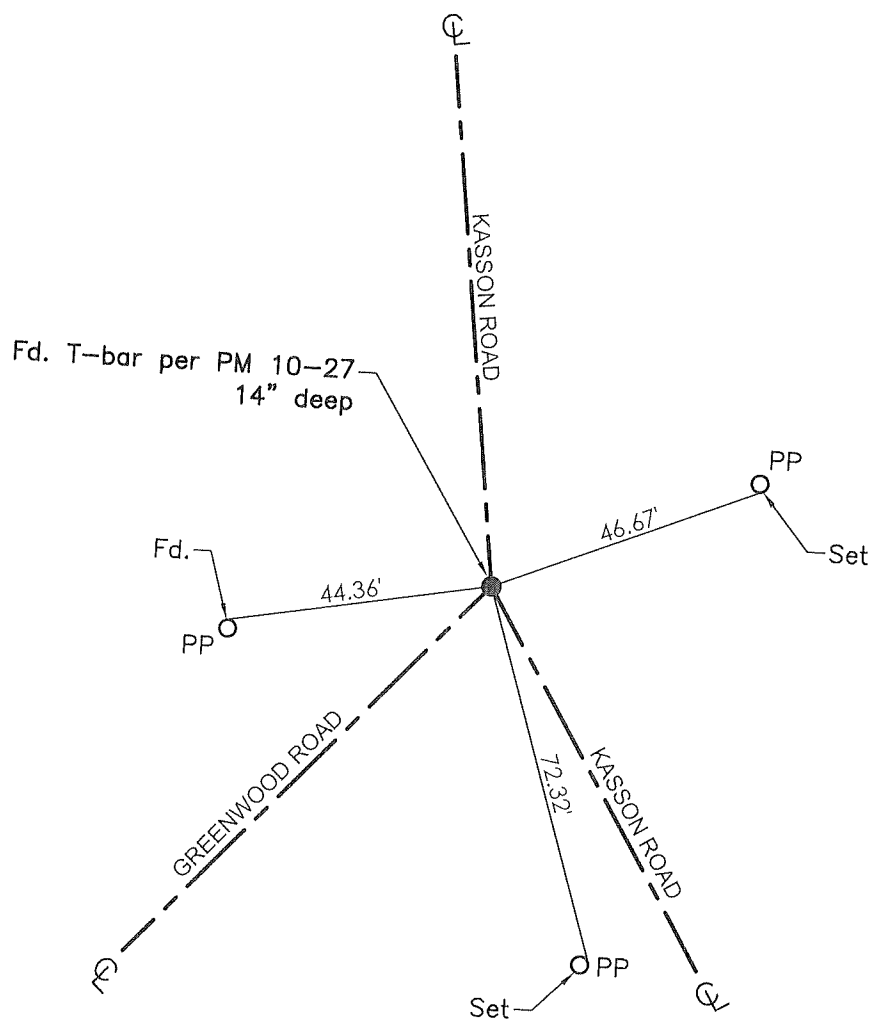
County Surveyor

County Surveyor's Comment





N.T.S.



TR=Tree
 MB=Mailbox
 BM=Bench Mark
 EP=Edge of Pavement
 YL=Yellow Line
 FH=Fire Hydrant
 CR=Corner Record
 FP=Fence Post
 JP=Joint Pole
 LP=Light Pole
 PP=Power Pole
 GP=Guy Pole
 SP=Service Pole
 TP=Telephone Pole
 S.F.N.=Searched Found Nothing
 N.T.S.=Not To Scale
 M&P=Maps & Plats
 PM=Parcel Map
 RS=Record of Survey
 FB=Field Book
 N=North
 SDI=Storm Drain Inlet
 TOC=Top of Curb
 PCC=Portland Cement Concrete

Set=Conc. Nail with Brass Washer stamped
 "S.J. Co.", unless otherwise noted
 Fd.=Found Conc. Nail with Brass Washer stamped
 "S.J. Co.", unless otherwise noted
 Note: Found Monuments are not tagged unless
 otherwise noted.

"No attempt was made to verify the Monument(s)"