

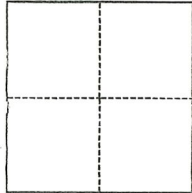
CORNER RECORD

Agency Index CR-23-046
Document Number _____

City of LODI County of SAN JOAQUIN, California
Brief Legal Description LOT 1, M.&P. 29-94, S.J.C.R.

CORNER TYPE

COORDINATES (Optional)



- Government Corner
- Meander
- Rancho
- Control
- Property
- Other

Date of Survey January 3, 2023

N. _____ E. _____
 Elevation _____
 Units Metric U.S. Survey Foot
 Horizontal Datum _____
 Zone _____ Epoch Date _____
 Vertical Datum _____
 Complies with Public Resources Code §§8801-8819
 Complies with Public Resources Code §§8890-8902

- PLS Act Ref.: 8765(d) 8771 8773 Other: _____
- Corner/Monument: Left as found Established Rebuilt Pre-Construction
 Found and tagged Reestablished Referenced Post-Construction

Narrative of corner identified and monument as found, set, reset, replaced, or removed:

See sheet #2 for description(s):

SEE SHEET 2 OF 2 FOR MONUMENTS FOUND AND SET.

SURVEYOR'S STATEMENT

This Corner Record was prepared by me or under my direction in conformance with
 the Professional Land Surveyors' Act on 01/05/2023
 Signed Walter John Shoup P.L.S. or R.C.E. No. L-7736

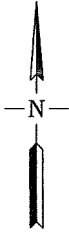


COUNTY SURVEYOR'S STATEMENT

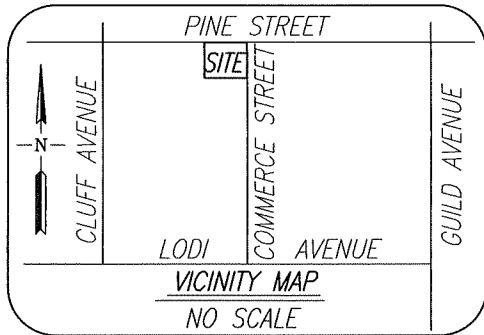
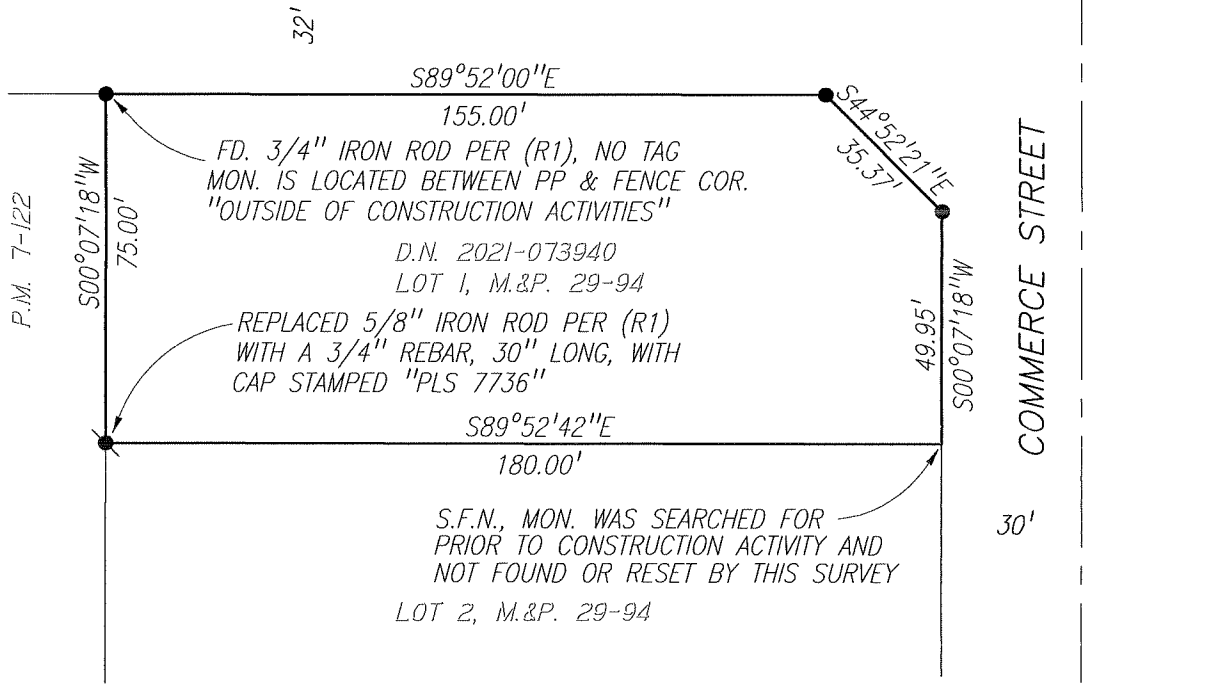
This Corner Record was received January 31, 2023
 and examined and filed February 10, 2023
 Signed James E. Hart P.L.S. or R.C.E. No. 8657
 Title County Surveyor



County Surveyor's Comment



PINE STREET



LEGEND:

- COR. CORNER
- D.N. DOCUMENT NUMBER, S.J.C.R.
- FD. FOUND
- S.F.N. SEARCHED, FD. NOTHING
- S.J.C.R. SAN JOAQUIN COUNTY RECORDS
- REF. REFERENCE
- R.S. RECORD OF SURVEY, BK.-PG., S.J.C.R.
- P.M. PARCEL MAP, BK.-PG., S.J.C.R.
- M.&P. MAPS AND PLATS, VOL.-PG., S.J.C.R.
- MON. MONUMENT
- PP POWER POLE

MONUMENTS FOUND

- FD. 3/4" IRON ROD PER (R1), NO CAP
- ⊙ FD. 3/4" IRON ROD WITH CAP STAMPED "RCE 19638" IN MON. WELL PER (R1)
- ⚡ FD. 5/8" IRON ROD PER (R1), NO TAG

REFERENCE:

- (R1) M.&P. 29-94



Scale: 1"=40'
 Job No.: 22-004

CORNER RECORD
EXHIBIT MAP

Date: 01/26/2023
 DWG: 22004CR.DWG