

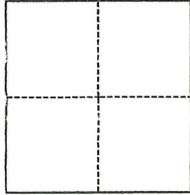
CORNER RECORD

Agency Index CR-23-045
Document Number _____

City of LODI County of SAN JOAQUIN, California
Brief Legal Description RETRACEMENT SURVEY OF PARCEL A, P.M. 10-148, S.J.C.R.

CORNER TYPE

COORDINATES (Optional)



- Government Corner Control
 Meander Property
 Rancho Other

Date of Survey 12/21/2022

N. _____ E. _____
 Elevation _____
 Units Metric U.S. Survey Foot
 Horizontal Datum _____
 Zone _____ Epoch Date _____
 Vertical Datum _____
 Complies with Public Resources Code §§8801-8819
 Complies with Public Resources Code §§8890-8902

PLS Act Ref.: 8765(d) 8771 8773 Other:
 Corner/
 Monument: Left as found Established Rebuilt Pre-Construction
 Found and tagged Reestablished Referenced Post-Construction

Narrative of corner identified and monument as found, set, reset, replaced, or removed:

See sheet #2 for description(s):

SEE SHEET 2 FOR MONUMENTS FOUND.

SURVEYOR'S STATEMENT

This Corner Record was prepared by me or under my direction in conformance with
 the Professional Land Surveyors' Act on 01/30/2023
 Signed Walter John Shoup P.L.S. or P.C.E. No. L-7736

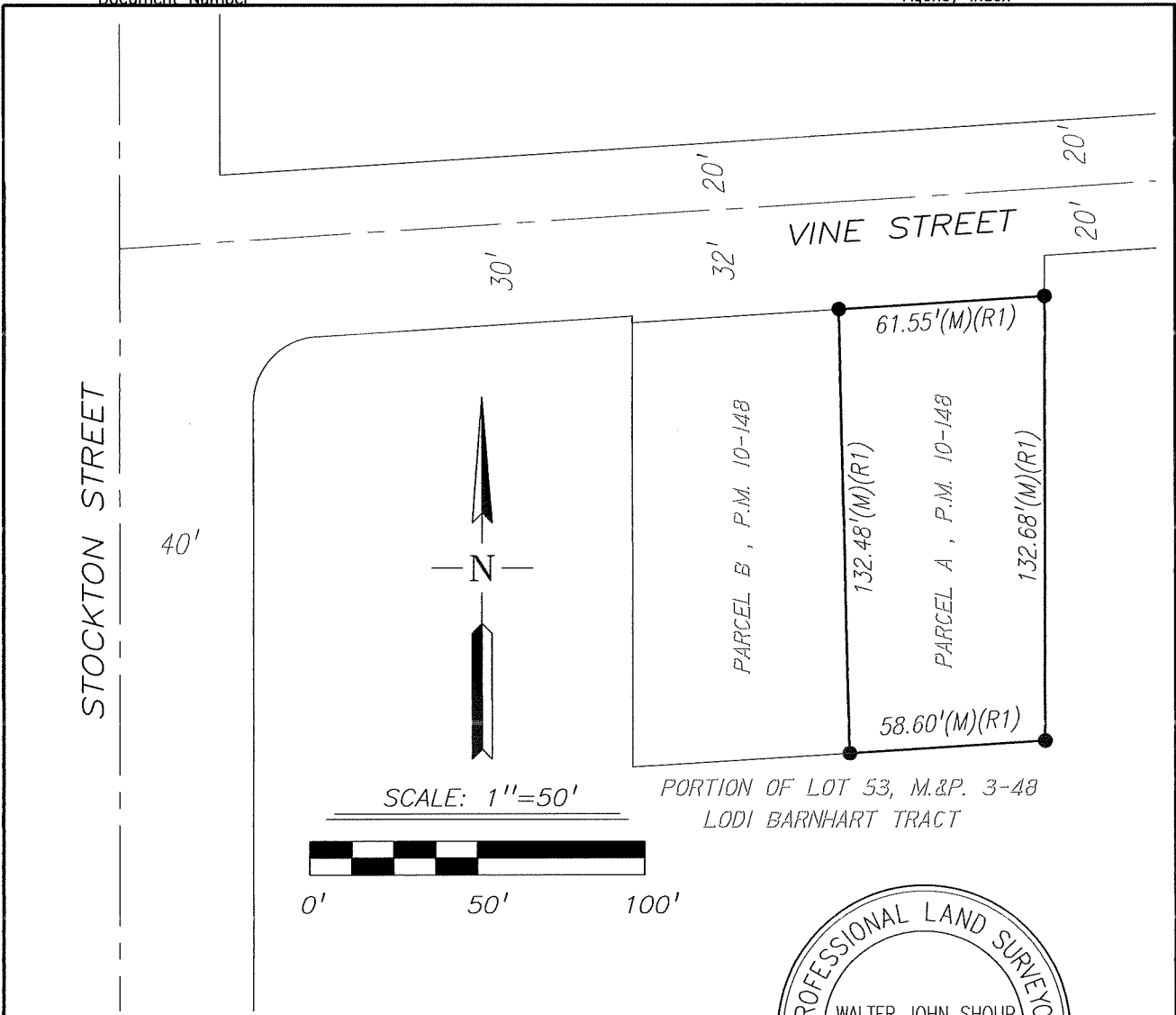


COUNTY SURVEYOR'S STATEMENT

This Corner Record was received January 31, 2023
 and examined and filed February 10, 2023
 Signed James E. Hart P.L.S. or R.C.E. No. 8657
 Title County Surveyor



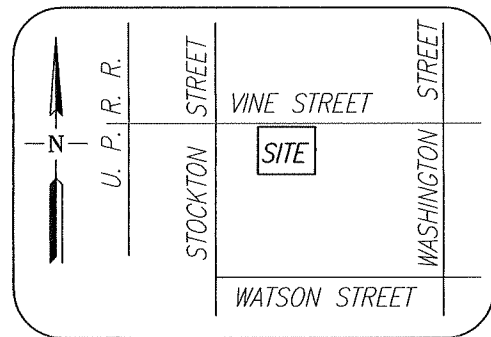
County Surveyor's Comment



REFERENCE:
(R1) P.M. 10-148

LEGEND:
 FD. FOUND
 MON. MONUMENT
 M.&P. MAPS & PLATS, BOOK-PAGE, S.J.C.R.
 P.M. PARCEL MAP, BOOK-PAGE, S.J.C.R.
 S.J.C.R. SAN JOAQUIN COUNTY RECORDS

MONUMENTS FOUND:
 ● FD. 5/8" REBAR, NO TAG, NO REFERENCE., DOWN 0.3' +/-,
 [3/4" IRON ROD WITH BRASS TAG "LS 4124" PER P.M. 10-148]



VICINITY MAP
NO SCALE

Scale: 1"=50'	CORNER RECORD EXHIBIT MAP	Date: 01/26/2022
Job No.: 22-226		DWG: 22226SV