

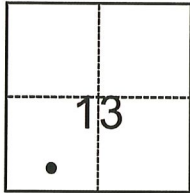
# CORNER RECORD

Agency Index CR-23-044  
Document Number \_\_\_\_\_

City of Lodi County of San Joaquin, California  
Brief Legal Description Lot 7, M.&P. 28-78, S.J.C.R.

### CORNER TYPE

### COORDINATES (Optional)



- Government Corner
- Meander
- Rancho
- Control
- Property
- Other

Date of Survey December 21, 2022

N. \_\_\_\_\_ E. \_\_\_\_\_

Elevation \_\_\_\_\_

Units  Metric  U.S. Survey Foot

Horizontal Datum \_\_\_\_\_

Zone \_\_\_\_\_ Epoch Date \_\_\_\_\_

Vertical Datum \_\_\_\_\_

Complies with Public Resources Code §§8801-8819

Complies with Public Resources Code §§8890-8902

T.3N., R.6E., M.D.B.M.

PLS Act Ref.:  8765(d)  8771  8773  Other:

Corner/Monument:  Left as found  Established  Rebuilt  Pre-Construction  
 Found and tagged  Reestablished  Referenced  Post-Construction

Narrative of corner identified and monument as found, set, reset, replaced, or removed:

See sheet #2 for description(s):

### SURVEYOR'S STATEMENT

This Corner Record was prepared by me or under my direction in conformance with  
 the Professional Land Surveyors' Act on January 20, 2023  
 Signed [Signature] (P.L.S. or R.C.E. No. L.S. 7269)

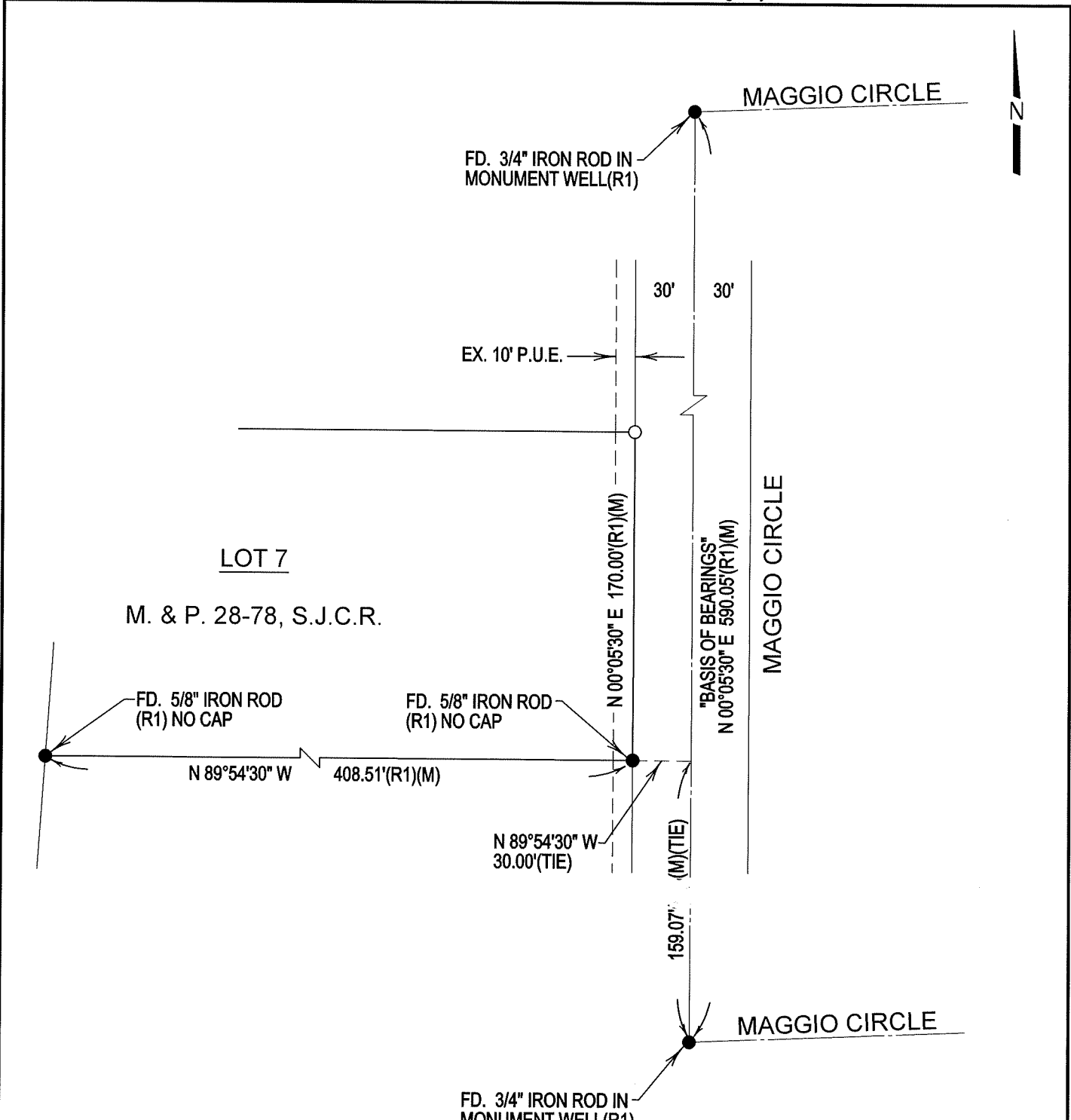


### COUNTY SURVEYOR'S STATEMENT

This Corner Record was received January 25, 2023  
 and examined and filed February 9, 2023  
 Signed [Signature] P.L.S. or R.C.E. No. 8657  
 Title County Surveyor



County Surveyor's Comment



**LEGEND**

- FD. FOUND
- M.&P. MAPS & PLATS
- (M) MEASURED
- S.J.C.R. SAN JOAQUIN COUNTY RECORDS
- EX. EXISTING
- P.U.E. PUBLIC UTILITY EASEMENT
- SET 3/4" X 30" IRON ROD CAPPED "LS 7269"
- FOUND MONUMENT AS NOTED

**REFERENCE**

(R1) M.&P. 28-78, S.J.C.R.