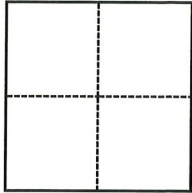


CORNER RECORD

Agency Index

CR-23-043

Document Number

City of Lathrop County of San Joaquin, CaliforniaBrief Legal Description Thomsen Rd. between Lisa Ln & Grayson Rd, Sec 26, T.1S., R.6E., M.D.B.& M.**CORNER TYPE****COORDINATES (Optional)**

- ☐ Government Corner ☐ Control
☐ Meander ☐ Property
☐ Rancho ☒ Other

N. _____ E. _____

Elevation _____

Units ☐ Metric ☒ U.S. Survey Foot

Horizontal Datum _____

Zone _____ Epoch Date _____

Vertical Datum _____

☐ Complies with Public Resources Code §§8801-8819☐ Complies with Public Resources Code §§8890-8902

PLS Act Ref.:

☐ 8765(d)☒ 8771☐ 8773☐ Other:Corner/
Monument:☒ Left as found☐ Established☐ Rebuilt☒ Pre-Construction☐ Found and tagged☐ Reestablished☒ Referenced☐ Post-Construction

Narrative of corner identified and monument as found, set, reset, replaced, or removed:

☒ See sheet #2 for description(s):**SURVEYOR'S STATEMENT**

This Corner Record was prepared by me or under my direction in conformance with

the Professional Land Surveyors' Act on October 31, 2022

Signed

Douglas F. Banks

P.L.S. or R.C.E. No.

8159**COUNTY SURVEYOR'S STATEMENT**

This Corner Record was received

January 4, 2023

and examined and filed

January 13, 2023

Signed

James E. Hart

P.L.S. or R.C.E. No.

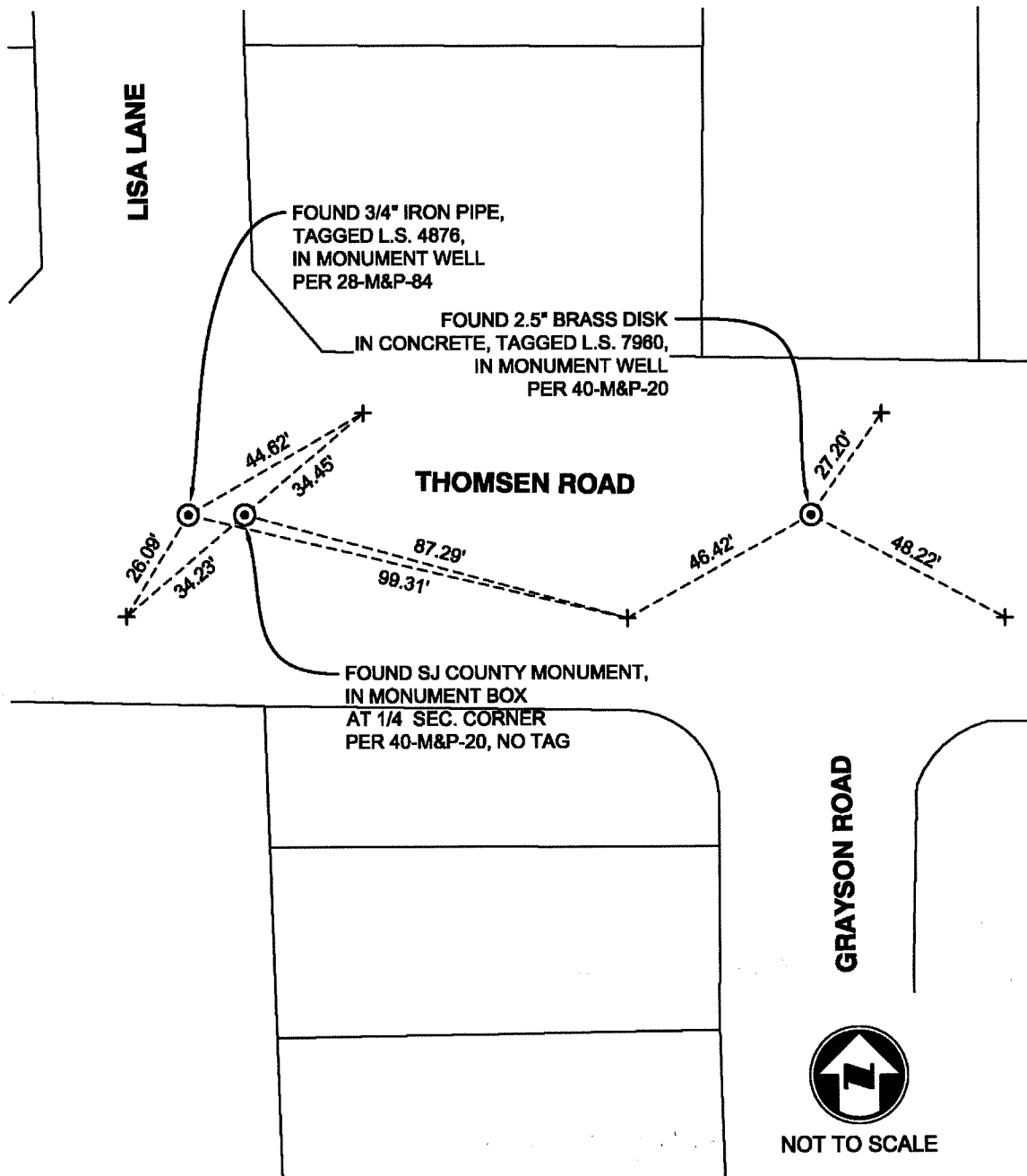
8657

Title

County Surveyor

County Surveyor's Comment



**NOTES:**

⊙ FOUND MONUMENT AS NOTED.

+ SET SAW CUT "+" IN CONCRETE ON TOP OF CURB, UNLESS OTHERWISE NOTED.

-M&P- BOOK, PAGE, MAPS AND PLATS, SAN JOAQUIN COUNTY RECORDS