

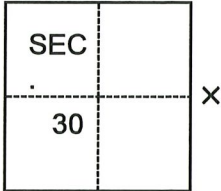
# CORNER RECORD

Agency Index CR-23-036  
 Document Number \_\_\_\_\_

City of RIPON County of SAN JOAQUIN, California  
 Brief Legal Description EAST 1/4 CORNER OF SEC. 30, T2S, R8E, M.D.B.M.

### CORNER TYPE

### COORDINATES (Optional)



- Government Corner     Control  
 Meander                       Property  
 Rancho                             Other

Date of Survey July 14, 2021

N. \_\_\_\_\_ E. \_\_\_\_\_

Elevation \_\_\_\_\_

Units  Metric  U.S. Survey Foot

Horizontal Datum \_\_\_\_\_

Zone \_\_\_\_\_ Epoch Date \_\_\_\_\_

Vertical Datum \_\_\_\_\_

Complies with Public Resources Code §§8801-8819

Complies with Public Resources Code §§8890-8902

PLS Act Ref.:  8765(d)     8771     8773     Other:

Corner/Monument:  Left as found     Established     Rebuilt     Pre-Construction

Found and tagged     Reestablished     Referenced     Post-Construction

Narrative of corner identified and monument as found, set, reset, replaced, or removed:

See sheet #2 for description(s):



### SURVEYOR'S STATEMENT

This Corner Record was prepared by me or under my direction in conformance with  
 the Professional Land Surveyors' Act on August 12, 2022.

Signed Douglas F. Banks P.L.S. or R.C.E. No. 8159

### COUNTY SURVEYOR'S STATEMENT

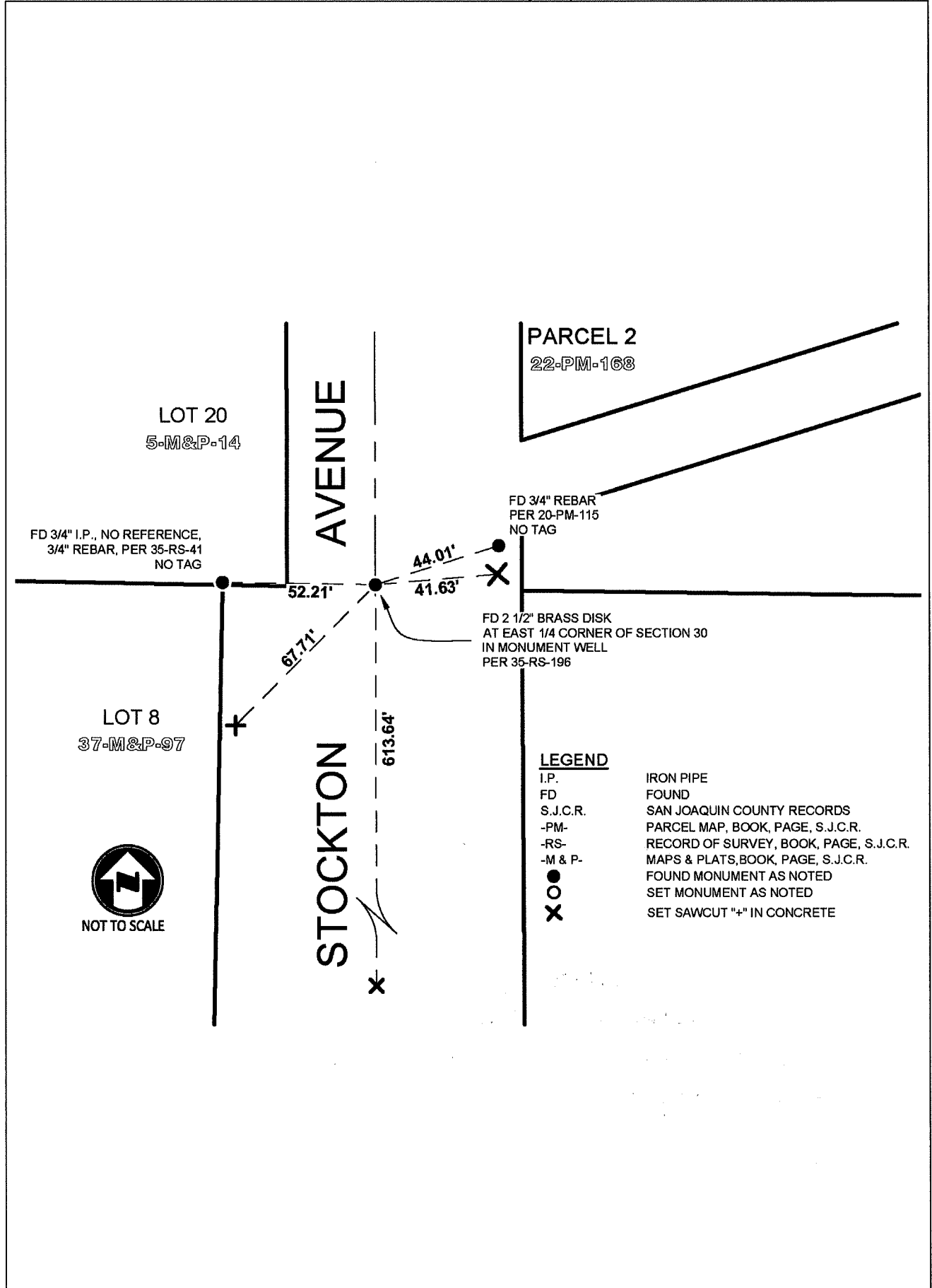
This Corner Record was received January 4, 2023  
 and examined and filed January 13, 2023.

Signed James E. Hart P.L.S. or R.C.E. No. 8657

Title County Surveyor

County Surveyor's Comment





**LEGEND**

- I.P. IRON PIPE
- FD FOUND
- S.J.C.R. SAN JOAQUIN COUNTY RECORDS
- PM- PARCEL MAP, BOOK, PAGE, S.J.C.R.
- RS- RECORD OF SURVEY, BOOK, PAGE, S.J.C.R.
- M & P- MAPS & PLATS, BOOK, PAGE, S.J.C.R.
- FOUND MONUMENT AS NOTED
- SET MONUMENT AS NOTED
- X SET SAWCUT "+" IN CONCRETE