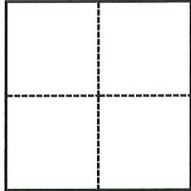


CORNER RECORD

Agency Index CR-23-030
Document Number _____

City of Lathrop County of San Joaquin, California
Brief Legal Description J St & Cambridge Dr, NW 1/4, Section 26, T.1S., R.6E., M.D.B.& M.



CORNER TYPE

- Government Corner
- Meander
- Rancho
- Control
- Property
- Other

Date of Survey September 12, 2022

COORDINATES (Optional)

- N. _____ E. _____
Elevation _____
Units Metric U.S. Survey Foot
Horizontal Datum _____
Zone _____ Epoch Date _____
Vertical Datum _____
 Complies with Public Resources Code §§8801-8819
 Complies with Public Resources Code §§8890-8902

- PLS Act Ref.: 8765(d) 8771 8773 Other:
Corner/Monument: Left as found Established Rebuilt Pre-Construction
 Found and tagged Reestablished Referenced Post-Construction

Narrative of corner identified and monument as found, set, reset, replaced, or removed:
 See sheet #2 for description(s):

SURVEYOR'S STATEMENT

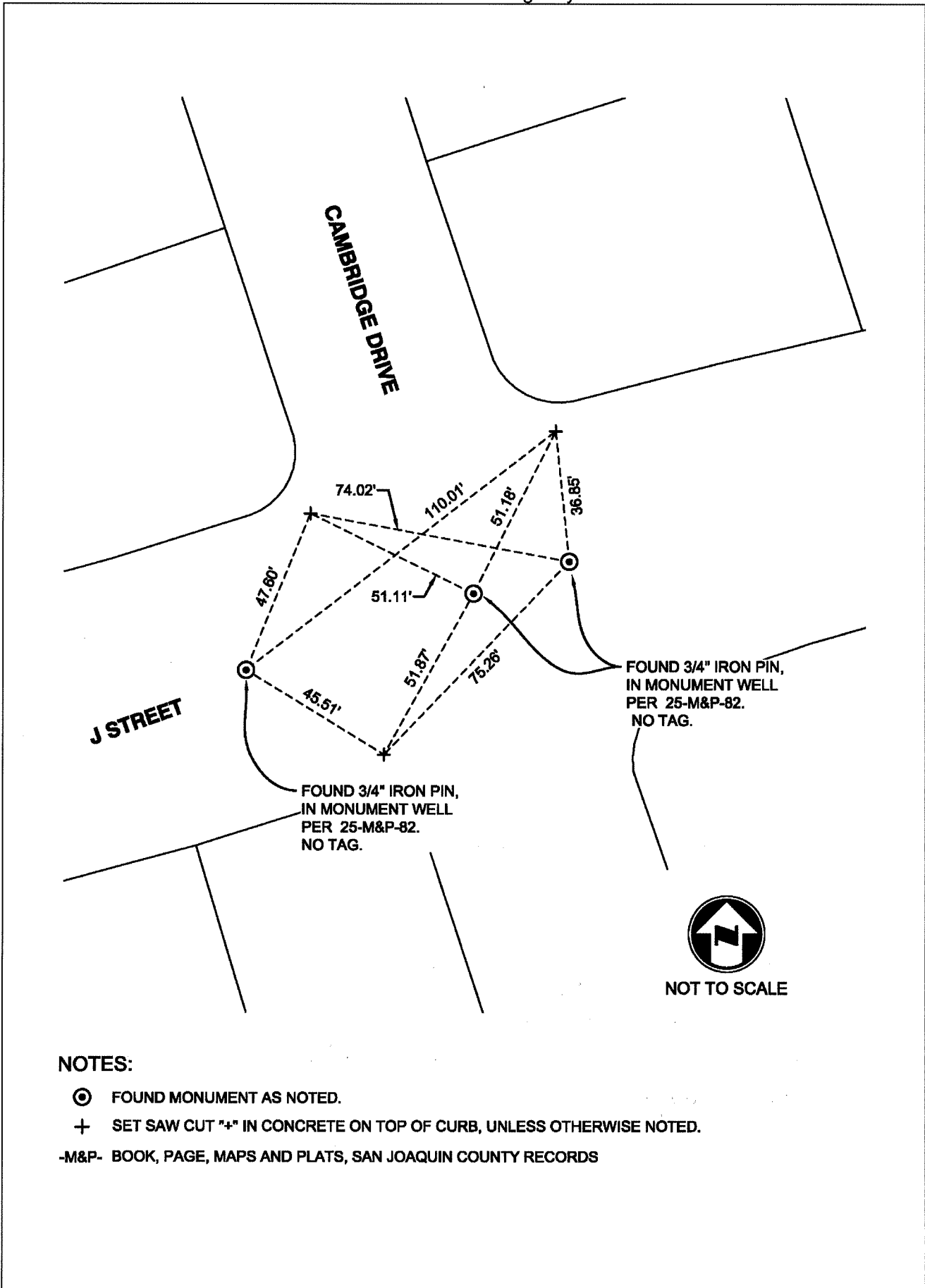
This Corner Record was prepared by me or under my direction in conformance with
the Professional Land Surveyors' Act on October 31, 2022
Signed Douglas F. Banks P.L.S. or R.C.E. No. 8159



COUNTY SURVEYOR'S STATEMENT

This Corner Record was received January 4, 2023
and examined and filed January 13, 2023
Signed James E. Hart P.L.S. or R.C.E. No. 8657
Title County Surveyor
County Surveyor's Comment _____





J STREET

CAMBRIDGE DRIVE

FOUND 3/4" IRON PIN,
IN MONUMENT WELL
PER 25-M&P-82.
NO TAG.

FOUND 3/4" IRON PIN,
IN MONUMENT WELL
PER 25-M&P-82.
NO TAG.



NOT TO SCALE

NOTES:

- ⊙ FOUND MONUMENT AS NOTED.
- + SET SAW CUT "+" IN CONCRETE ON TOP OF CURB, UNLESS OTHERWISE NOTED.

-M&P- BOOK, PAGE, MAPS AND PLATS, SAN JOAQUIN COUNTY RECORDS