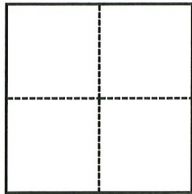


# CORNER RECORD

Agency Index CR-23-027  
Document Number \_\_\_\_\_

City of Lathrop County of San Joaquin, California  
Brief Legal Description J St approx 359' west of Cambridge Dr, Section 26, T.1S., R.6E., M.D.B.& M.



### CORNER TYPE

- Government Corner
- Meander
- Rancho
- Control
- Property
- Other

Date of Survey September 12, 2022

### COORDINATES (Optional)

N. \_\_\_\_\_ E. \_\_\_\_\_  
 Elevation \_\_\_\_\_  
 Units  Metric  U.S. Survey Foot  
 Horizontal Datum \_\_\_\_\_  
 Zone \_\_\_\_\_ Epoch Date \_\_\_\_\_  
 Vertical Datum \_\_\_\_\_  
 Complies with Public Resources Code §§8801-8819  
 Complies with Public Resources Code §§8890-8902

PLS Act Ref.:  8765(d)  8771  8773  Other:  
 Corner/Monument:  Left as found  Established  Rebuilt  Pre-Construction  
 Found and tagged  Reestablished  Referenced  Post-Construction

Narrative of corner identified and monument as found, set, reset, replaced, or removed:  
 See sheet #2 for description(s):



### SURVEYOR'S STATEMENT

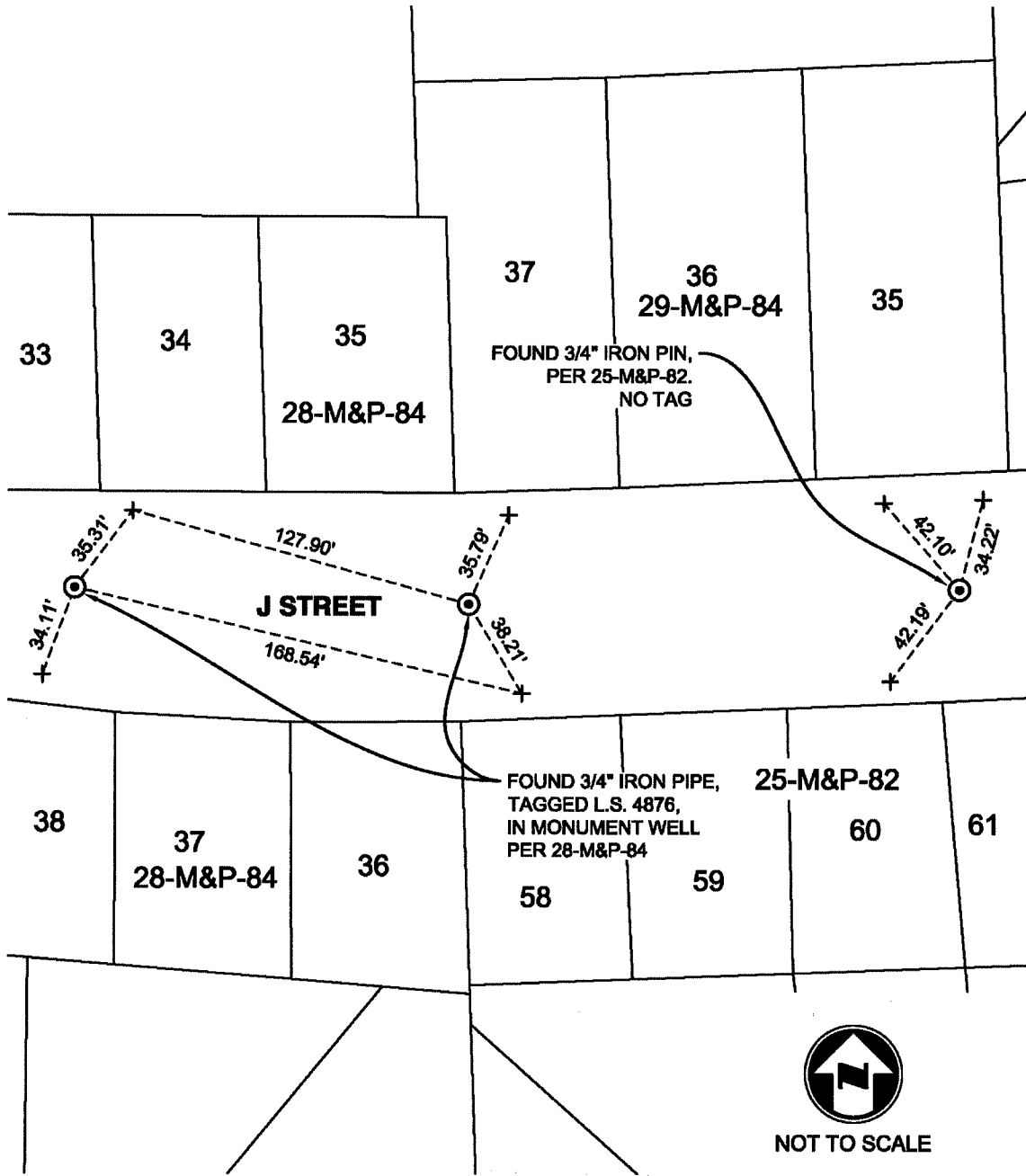
This Corner Record was prepared by me or under my direction in conformance with  
 the Professional Land Surveyors' Act on October 31, 2022  
 Signed Douglas F. Banks P.L.S. or R.C.E. No. 8159

### COUNTY SURVEYOR'S STATEMENT

This Corner Record was received January 4, 2023  
 and examined and filed January 13, 2023  
 Signed James E. Hart P.L.S. or R.C.E. No. 8657  
 Title County Surveyor



County Surveyor's Comment



NOT TO SCALE

**NOTES:**

⊙ FOUND MONUMENT AS NOTED.

+ SET SAW CUT "+" IN CONCRETE ON TOP OF CURB, UNLESS OTHERWISE NOTED.

-M&P- BOOK, PAGE, MAPS AND PLATS, SAN JOAQUIN COUNTY RECORDS