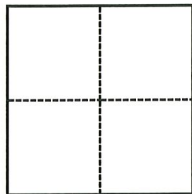


# CORNER RECORD

Agency Index

CR-23-025

Document Number

City of Lathrop County of San Joaquin, CaliforniaBrief Legal Description Orlando Ln between Osage Pl & Warfield Rd, Sec. 26, T.1S., R.6E., M.D.B. & M.**CORNER TYPE****COORDINATES (Optional)**

- |  |   |
|--|---|
| <input type="checkbox"/> Government Corner | <input type="checkbox"/> Control          |
| <input type="checkbox"/> Meander           | <input type="checkbox"/> Property         |
| <input type="checkbox"/> Rancho            | <input checked="" type="checkbox"/> Other |

N. \_\_\_\_\_ E. \_\_\_\_\_

Elevation \_\_\_\_\_

Units ☐ Metric ☒ U.S. Survey Foot

Horizontal Datum \_\_\_\_\_

Zone \_\_\_\_\_ Epoch Date \_\_\_\_\_

Vertical Datum \_\_\_\_\_

☐ Complies with Public Resources Code §§8801-8819☐ Complies with Public Resources Code §§8890-8902

PLS Act Ref.:

☐ 8765(d)☒ 8771☐ 8773☐ Other:Corner/  
Monument:☒ Left as found☐ Established☐ Rebuilt☒ Pre-Construction☐ Found and tagged☐ Reestablished☒ Referenced☐ Post-Construction

Narrative of corner identified and monument as found, set, reset, replaced, or removed:

☒ See sheet #2 for description(s):**SURVEYOR'S STATEMENT**

This Corner Record was prepared by me or under my direction in conformance with

the Professional Land Surveyors' Act on October 31, 2022

Signed

P.L.S. or R.C.E. No.

8159**COUNTY SURVEYOR'S STATEMENT**

This Corner Record was received

January 4, 2023

and examined and filed

January 13, 2023

Signed

P.L.S. or R.C.E. No.

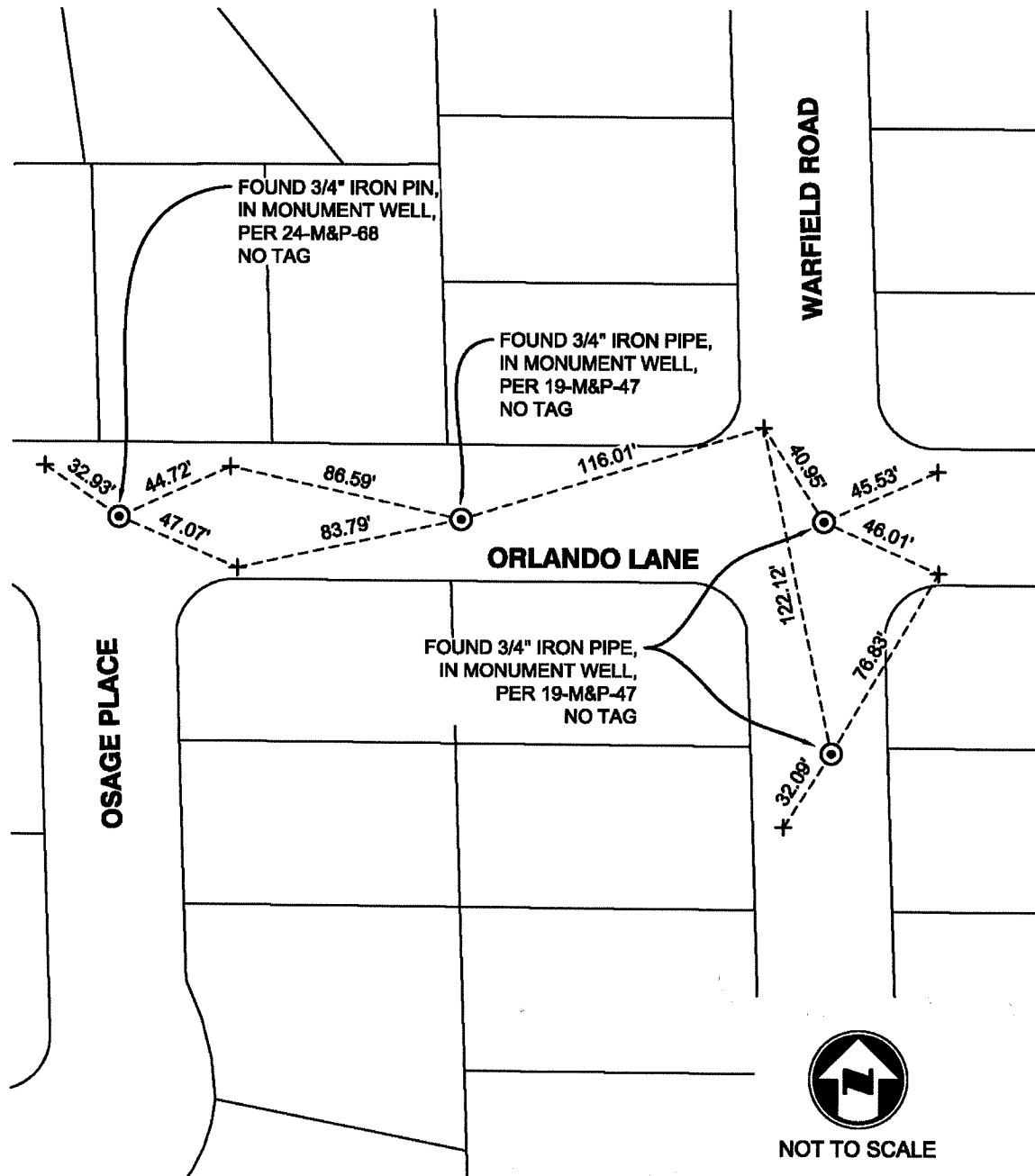
8657

Title

County Surveyor

County Surveyor's Comment



**NOTES:**

- ⊙ FOUND MONUMENT AS NOTED.
- + SET SAW CUT "+" IN CONCRETE ON TOP OF CURB, UNLESS OTHERWISE NOTED.

-M&P- BOOK, PAGE, MAPS AND PLATS, SAN JOAQUIN COUNTY RECORDS