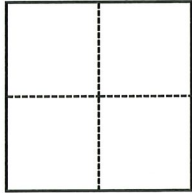


CORNER RECORD

Agency Index CR-23-017
Document Number _____

City of Lathrop County of San Joaquin, California
Brief Legal Description Thomsen Rd. & Derby Ln, Section 26, T.1S., R.6E., M.D.B.& M.



CORNER TYPE

- Government Corner
- Meander
- Rancho
- Control
- Property
- Other

Date of Survey September 12, 2022

COORDINATES (Optional)

N. _____ E. _____
 Elevation _____
 Units Metric U.S. Survey Foot
 Horizontal Datum _____
 Zone _____ Epoch Date _____
 Vertical Datum _____
 Complies with Public Resources Code §§8801-8819
 Complies with Public Resources Code §§8890-8902

PLS Act Ref.: 8765(d) 8771 8773 Other:
 Corner/Monument: Left as found Established Rebuilt Pre-Construction
 Found and tagged Reestablished Referenced Post-Construction

Narrative of corner identified and monument as found, set, reset, replaced, or removed:
 See sheet #2 for description(s):



SURVEYOR'S STATEMENT

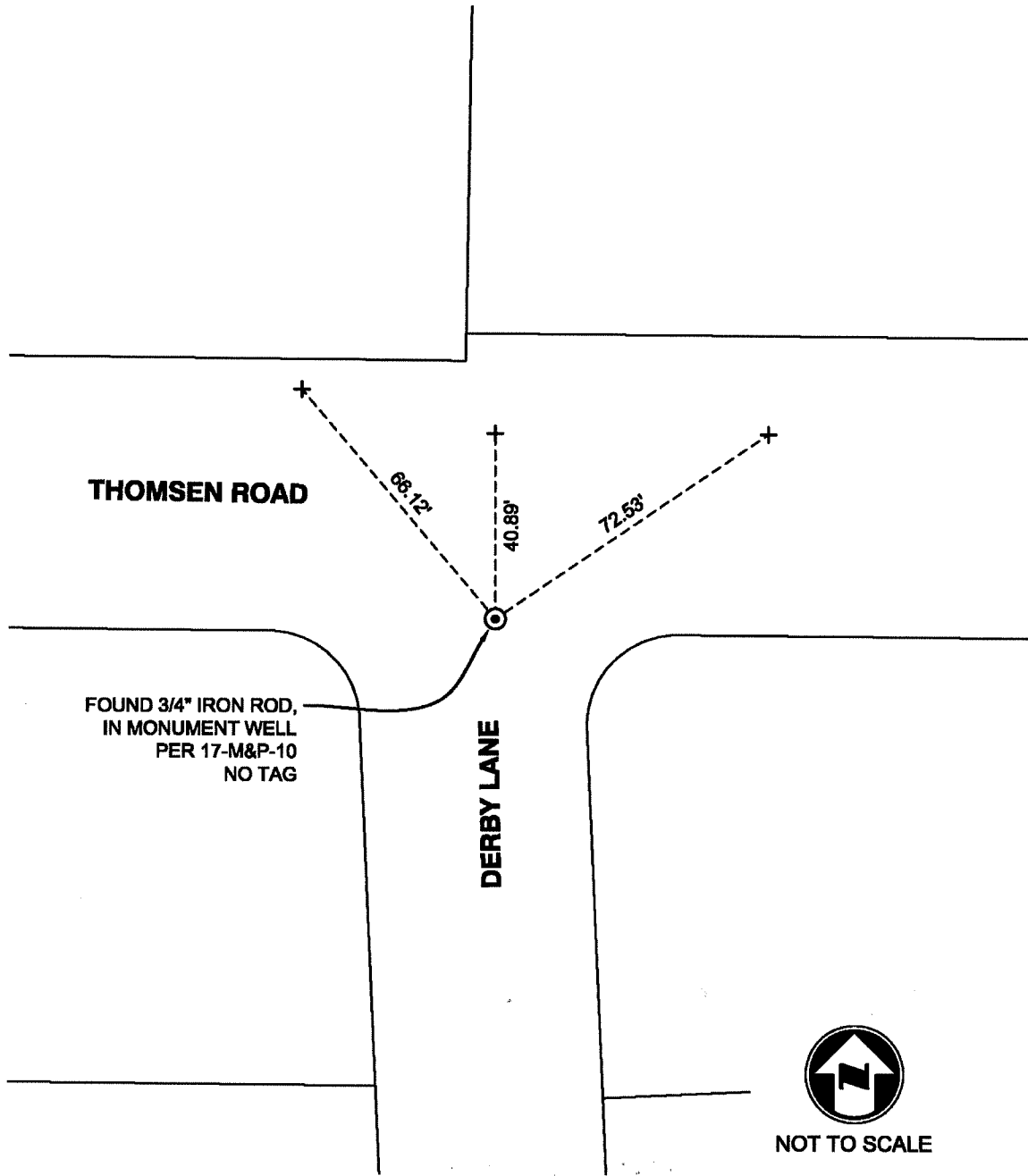
This Corner Record was prepared by me or under my direction in conformance with
 the Professional Land Surveyors' Act on October 31, 2022
 Signed Douglas F. Banks P.L.S. or R.C.E. No. 8159

COUNTY SURVEYOR'S STATEMENT

This Corner Record was received January 4, 2023
 and examined and filed January 13, 2023
 Signed James E. Hart P.L.S. or R.C.E. No. 8657
 Title County Surveyor



County Surveyor's Comment



NOTES:

- ⊙ FOUND MONUMENT AS NOTED.
- + SET SAW CUT "+" IN CONCRETE ON TOP OF CURB, UNLESS OTHERWISE NOTED.
- M&P- BOOK, PAGE, MAPS AND PLATS, SAN JOAQUIN COUNTY RECORDS