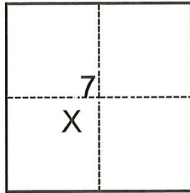


CORNER RECORD

Agency Index CR-23-013
 Document Number _____

City of _____ County of San Joaquin, California
 Brief Legal Description O.R. 3250-488, R.S. 27-37, S.J.C.R.

CORNER TYPE



- Government Corner Control
 Meander Property
 Rancho Other

Date of Survey November 22, 2022

COORDINATES (Optional)

N. _____ E. _____
 Elevation _____
 Units Metric U.S. Survey Foot
 Horizontal Datum _____
 Zone _____ Epoch Date _____
 Vertical Datum _____
 Complies with Public Resources Code §§8801-8819
 Complies with Public Resources Code §§8890-8902

T.3N., R.8E., M.D.B.&M.

PLS Act Ref.: 8765(d) 8771 8773 Other:
 Corner/
 Monument: Left as found Established Rebuilt Pre-Construction
 Found and tagged Reestablished Referenced Post-Construction

Narrative of corner identified and monument as found, set, reset, replaced, or removed:
 See sheet #2 for description(s):

SURVEYOR'S STATEMENT

This Corner Record was prepared by me or under my direction in conformance with
 the Professional Land Surveyors' Act on January 3, 2023
 Signed Joe Murphy (P.L.S.) or R.C.E. No. 7269

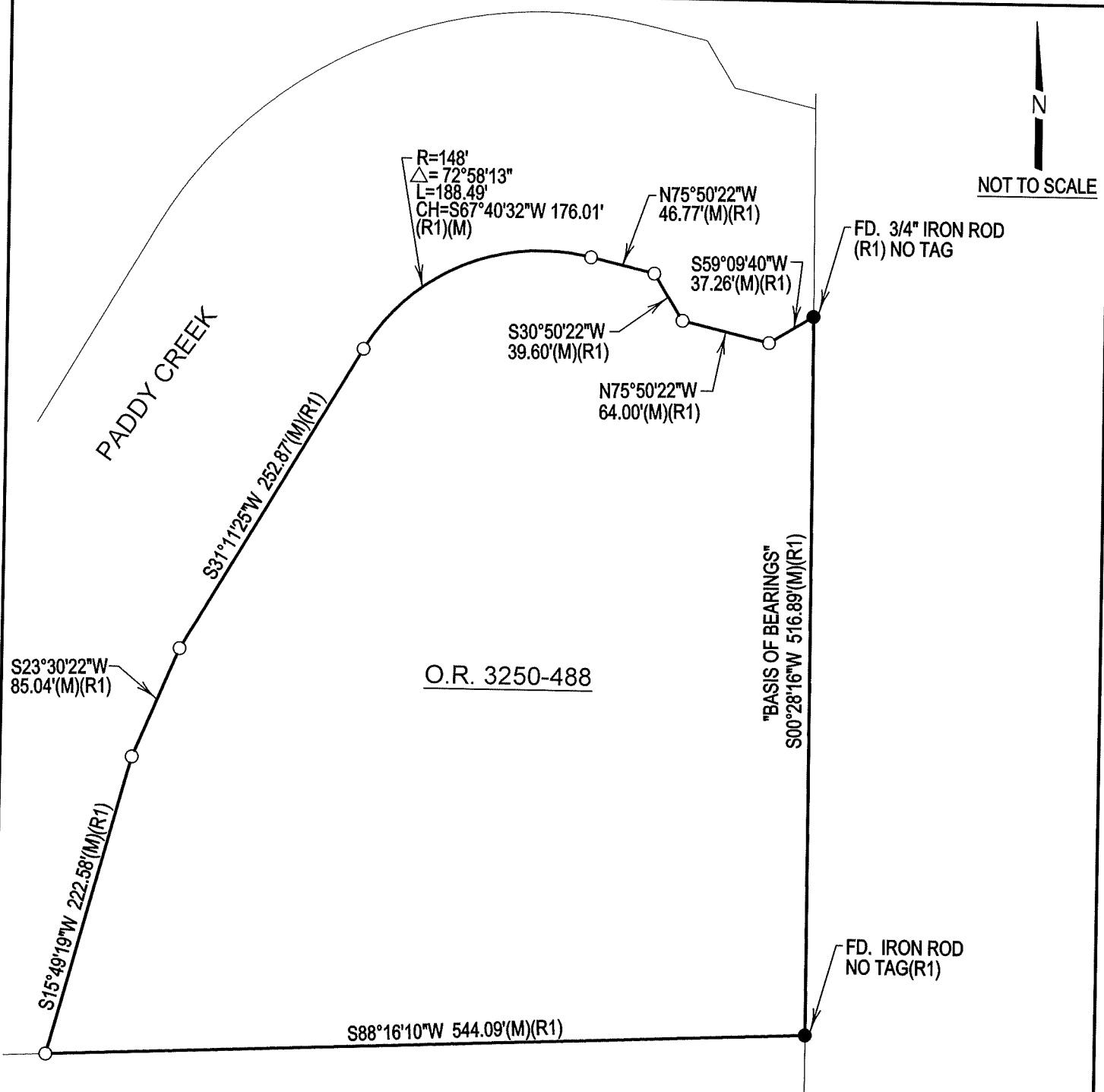


COUNTY SURVEYOR'S STATEMENT

This Corner Record was received January 4, 2023
 and examined and filed January 13, 2023
 Signed James E Hart P.L.S. or R.C.E. No. 8657
 Title County Surveyor



County Surveyor's Comment



LEGEND

FD.	FOUND	MON.	MONUMENT
R.S.	RECORD OF SURVEY	COR.	CORNER
(M)	MEASURED	SEC.	SECTION
S.J.C.R.	SAN JOAQUIN COUNTY RECORDS	O.R.	OFFICIAL RECORDS, S.J.C.R.
SFN	SEARCHED FOUND		
	NOTHING		
S.J.CO.	SAN JOAQUIN COUNTY		
○	SET 3/4" X 30" IRON ROD CAPPED "LS 7269" OR AS NOTED.		
●	FOUND MONUMENT AS NOTED		

REFERENCE

(R1) R.S. 27-37, S.J.C.R.

O.R. 3250-488