

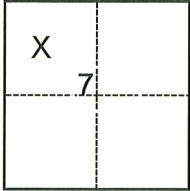
# CORNER RECORD

Agency Index CR-23-012  
 Document Number \_\_\_\_\_

City of \_\_\_\_\_ County of San Joaquin, California  
 Brief Legal Description South line Parcel 3, P.M. 24-175, S.J.C.R.

**CORNER TYPE**

**COORDINATES (Optional)**



- Government Corner
- Meander
- Rancho
- Control
- Property
- Other

Date of Survey November 22, 2022

N. \_\_\_\_\_ E. \_\_\_\_\_

Elevation \_\_\_\_\_

Units  Metric  U.S. Survey Foot

Horizontal Datum \_\_\_\_\_

Zone \_\_\_\_\_ Epoch Date \_\_\_\_\_

Vertical Datum \_\_\_\_\_

Complies with Public Resources Code §§8801-8819

Complies with Public Resources Code §§8890-8902

T.3N., R.8E., M.D.B.&M.

- PLS Act Ref.:  8765(d)  8771  8773  Other:
- Corner/Monument:  Left as found  Established  Rebuilt  Pre-Construction
- Found and tagged  Reestablished  Referenced  Post-Construction

Narrative of corner identified and monument as found, set, reset, replaced, or removed:  
 See sheet #2 for description(s):

**SURVEYOR'S STATEMENT**

This Corner Record was prepared by me or under my direction in conformance with  
 the Professional Land Surveyors' Act on January 3, 2023  
 Signed [Signature] (P.L.S. or R.C.E. No. 7269)

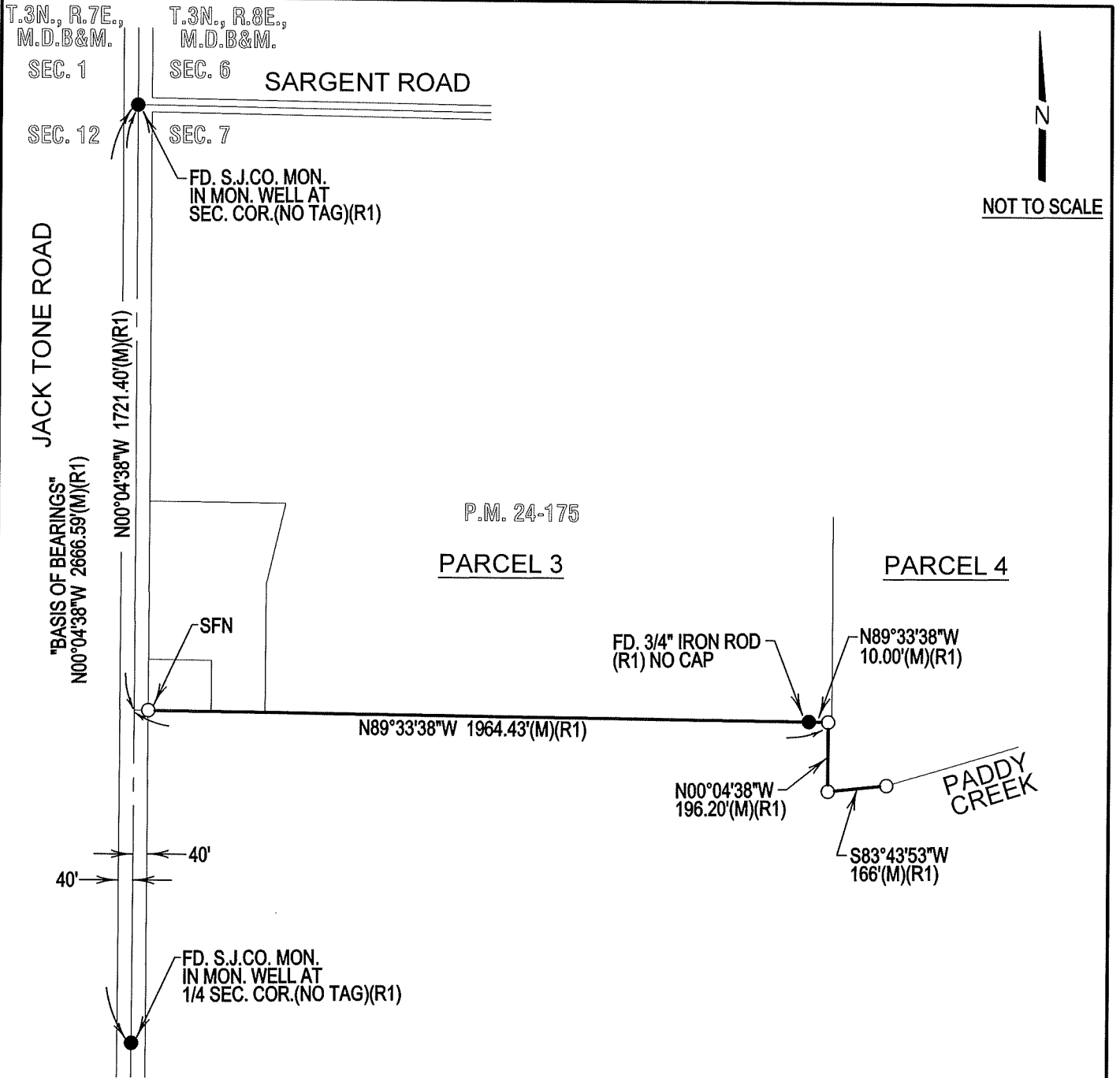


**COUNTY SURVEYOR'S STATEMENT**

This Corner Record was received January 4, 2023  
 and examined and filed January 13, 2023  
 Signed James E Hart P.L.S. or R.C.E. No. 8657  
 Title County Surveyor



**County Surveyor's Comment**



**LEGEND**

FD.	FOUND	MON.	MONUMENT
P.M.	PARCEL MAP	COR.	CORNER
(M)	MEASURED	SEC.	SECTION
S.J.C.R.	SAN JOAQUIN COUNTY RECORDS		
SFN	SEARCHED FOUND NOTHING		
S.J.CO.	SAN JOAQUIN COUNTY		
○	SET 3/4" X 30" IRON ROD CAPPED "LS 7269" OR AS NOTED.		
●	FOUND MONUMENT AS NOTED		

**REFERENCE**

(R1) P.M. 24-175, S.J.C.R.