

CORNER RECORD

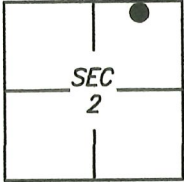
Agency Index CR-22-296

Document Number _____

City of LODI

County of SAN JOAQUIN, California

Brief Legal Description FOUND MON AS SHOWN ON 24-MP-48, S.J.C.R.



T3N/R6E

CORNER TYPE

- Government Corner Control
 Meander Property
 Rancho Other

Date of Survey 2021/07/27

COORDINATES (Optional)

- N. _____ E. _____
 Elevation _____
 Units Metric U.S. Survey Foot
 Horizontal Datum _____
 Zone _____ Epoch Date _____
 Vertical Datum: _____

Complies with Public Resources Code §§8801-8819

Complies with Public Resources Code §§8890-8902

PLS Act Ref.: 8765(d) 8771 8773

Other: _____

Corner/Monument: Left as found Established Rebuilt Pre-Construction
 Found and tagged Reestablished Referenced Post-Construction

Narrative of corner identified and monument as found and set or reset:
 See sheet #2 for description(s):

SURVEYOR'S STATEMENT

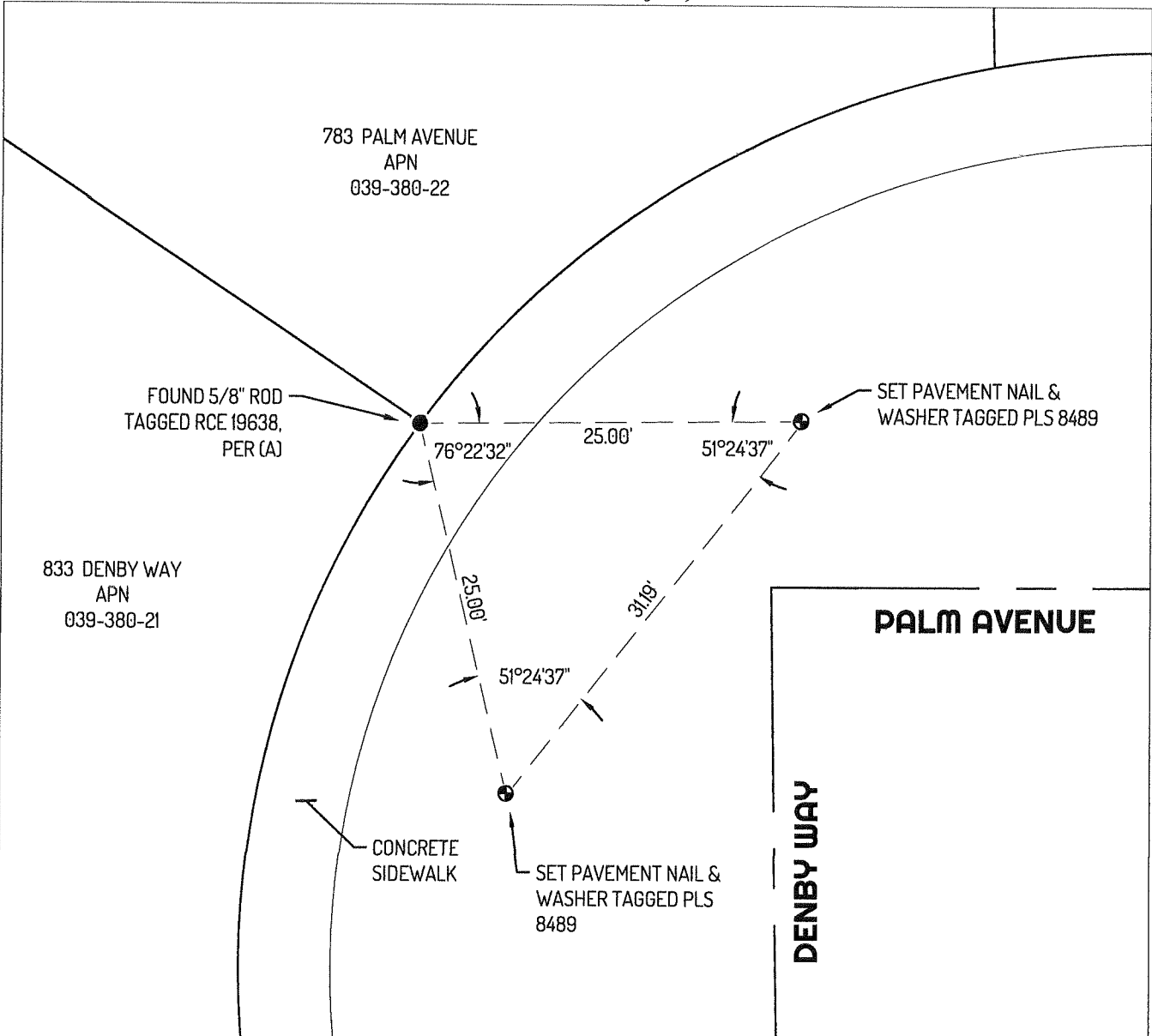
This Corner Record was prepared by me or under my direction in conformance with
 the Professional Land Surveyor's Act on 29 JULY 2021
 Signed Scott L. Blake P.L.S. or R.C.E. No. 8489



COUNTY SURVEYOR'S STATEMENT

This Corner Record was received August 12, 2022
 and examine and filed September 1, 2022
 Signed James E. Hart P.L.S. or R.C.E. No. 8657
 Title County Surveyor
 County Surveyor's Comment _____





LEGEND

- FOUND 3/4" REBAR, PER (A) NO CAP OR TAG
- SET CONTROL POINTS
- APN ASSESSOR'S PARCEL NUMBER
- MP MAPS AND PLATS, SAN JOAQUIN COUNTY RECORDS

LINETYPES

- — — — — CENTERLINE
- — — — — EDGE OF CONCRETE
- — — — — LINE
- — — — — TIE LINE

REFERENCES

- (A) MP 24-048

