

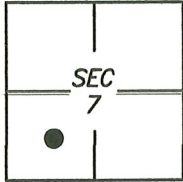
CORNER RECORD

Agency Index CR-22-295
Document Number _____

City of _____

County of SAN JOAQUIN California

Brief Legal Description MON NEAR APN's 085-210-36 & 37 PER CR 19-095, S.J.C.S.R.



T2N/R7E

CORNER TYPE

Government Corner Control
 Meander Property
 Rancho Other

Date of Survey 2021/07/23

COORDINATES (Optional)

N. _____ E. _____

Elevation _____

Units Metric U.S. Survey Foot

Horizontal Datum _____

Zone _____ Epoch Date _____

Vertical Datum: _____

Complies with Public Resources Code §§8801-8819

Complies with Public Resources Code §§8890-8902

PLS Act Ref.: 8765(d) 8771 8773 Other: _____

Corner/Monument: Left as found Established Rebuilt Pre-Construction
 Found and tagged Reestablished Referenced Post-Construction

Narrative of corner identified and monument as found and set or reset:

See sheet #2 for description(s):

SURVEYOR'S STATEMENT

This Corner Record was prepared by me or under my direction in conformance with
 the Professional Land Surveyor's Act on, 28 JULY, 2021.
 Signed [Signature] P.L.S. or R.C.E. No.: 8489



COUNTY SURVEYOR'S STATEMENT

This Corner Record was received August 12, 2022 and examined
 and filed September 1, 2022.

Signed James E Hart P.L.S. or R.C.E. No.: 8657
 Title County Surveyor

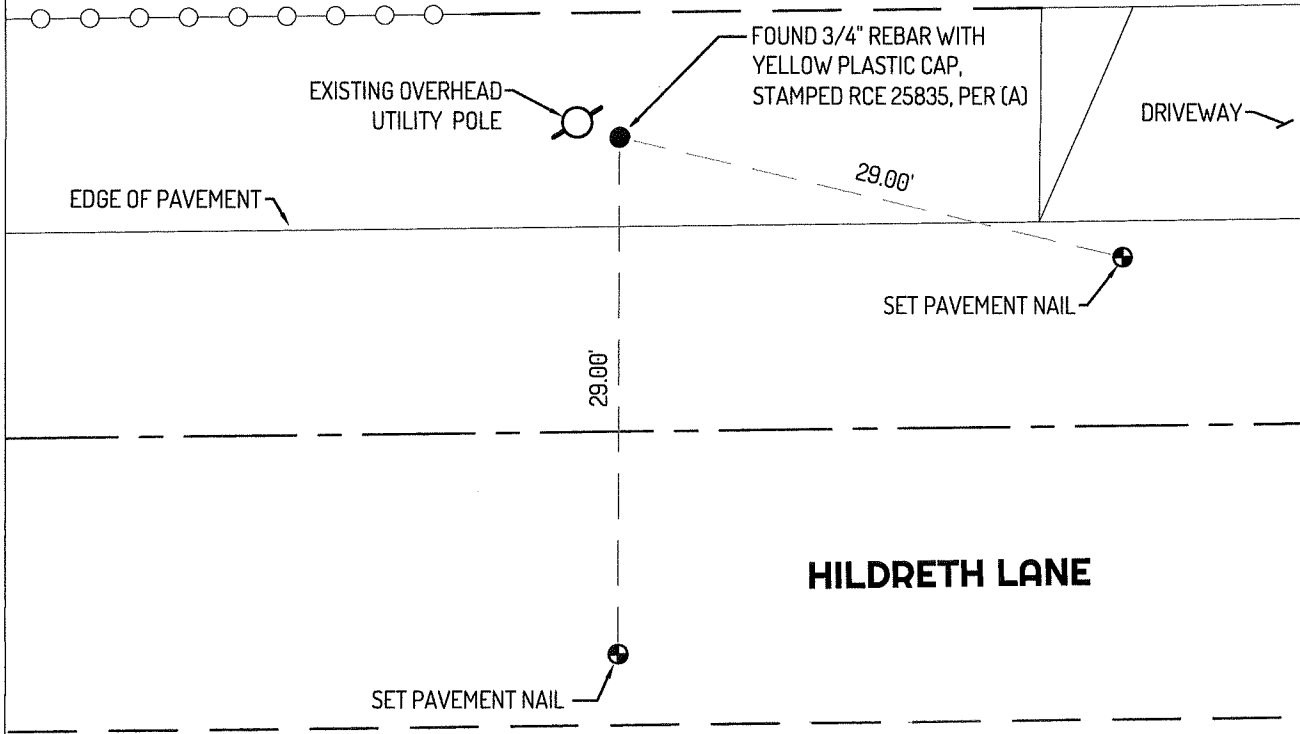
County Surveyor's Comment



4919
APN
085-210-36

4929 HILDRETH LN.
APN
085-210-37

4950
APN
085-300-54



LEGEND

- FOUND CONCRETE MONUMENT, PER (A)
- ⊕— SET CONTROL POINT
- 4929 STREET ADDRESS
- APN ASSESSOR'S PARCEL NUMBER
- S.J.C.S.R SAN JOAQUIN COUNTY SURVEYOR'S RECORDS

LINETYPES

- — — — — CENTERLINE
- FENCE
- — — — — RIGHT-OF-WAY SIDELINE
- · — · — TIE LINE

REFERENCE

(A) CORNER RECORD 19-095, S.J.C.S.R.

