

CORNER RECORD

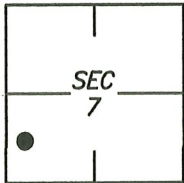
Agency Index CR-22-293

Document Number _____

City of _____

County of SAN JOAQUIN, California

Brief Legal Description FOUND MONUMENT ON HILDRETH LANE NEAR APN 085-120-03. NO MAPS AVAILABLE.



T2N/R7E

CORNER TYPE

- Government Corner Control
- Meander Property
- Rancho Other

Date of Survey 2021/06/18

COORDINATES (Optional)

- N. _____ E. _____
- Elevation _____
- Units Metric U.S. Survey Foot
- Horizontal Datum _____
- Zone _____ Epoch Date _____
- Vertical Datum: _____
- Complies with Public Resources Code §§8801-8819
- Complies with Public Resources Code §§8890-8902

PLS Act Ref.: 8765(d) 8771 8773 Other: _____

Corner/Monument: Left as found Established Rebuilt Pre-Construction
 Found and tagged Reestablished Referenced Post-Construction

Narrative of corner identified and monument as found and set or reset:

See sheet #2 for description(s):

SURVEYOR'S STATEMENT

This Corner Record was prepared by me or under my direction in conformance with the Professional Land Surveyor's Act on 22 JUNE, 2021.
Signed Scott L. Blake P.L.S. or R.C.E. No.: 8489



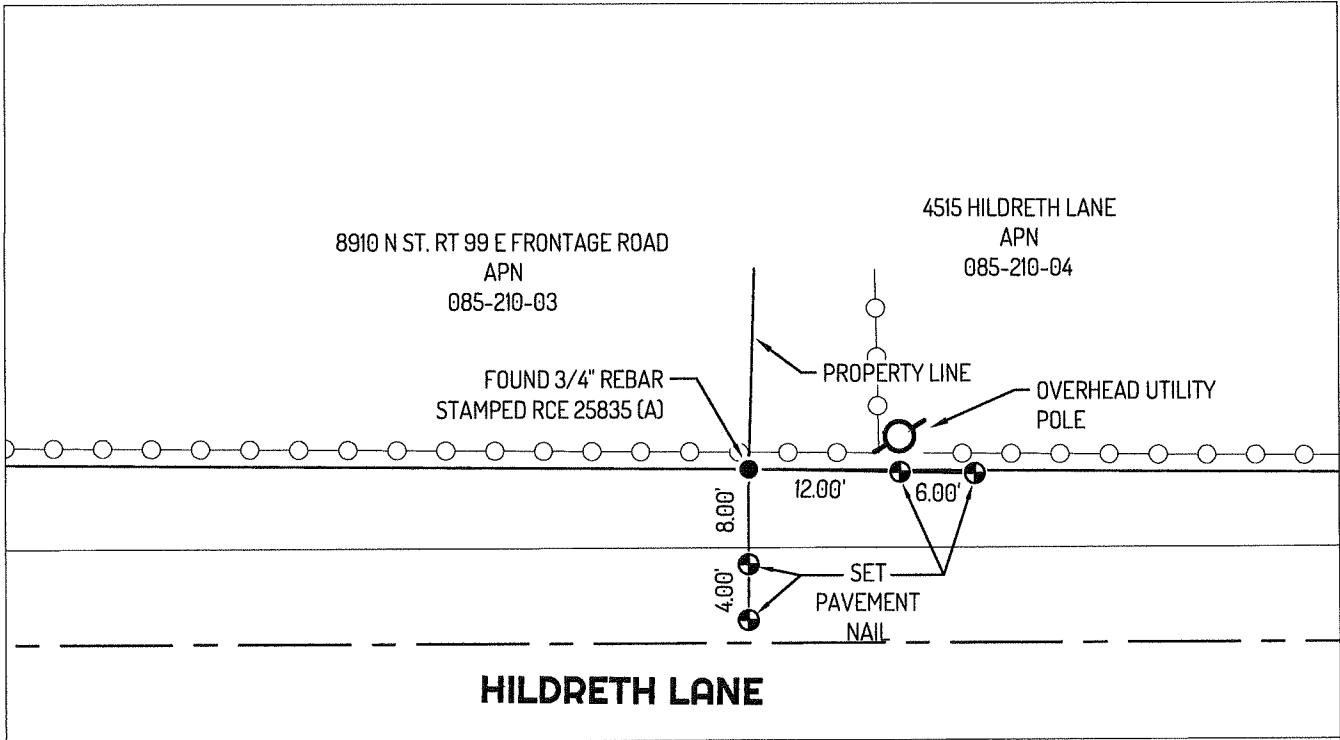
COUNTY SURVEYOR'S STATEMENT

This Corner Record was received August 12, 2022 and examined and filed September 1, 2022.

Signed James E. Hart P.L.S. or R.C.E. No.: 8657
Title County Surveyor

County Surveyor's Comment





4416 HILDRETH LANE
APN
085-300-01

LEGEND

- FOUND CONCRETE MONUMENT, PER (A)
- ⊙ SET CONTROL POINT
- 435 REFERENCE STREET ADDRESS
- APN ASSESSOR'S PARCEL NUMBER

LINETYPES

- — — — CENTERLINE
- — — — EDGE OF PAVEMENT
- ○ ○ ○ FENCE
- — — — PROPERTY LINE
- — — — TIE LINE

REFERENCES

- (A) MONUMENT NOT OF RECORD

