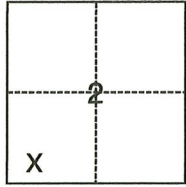


CORNER RECORD

Agency Index CR-22-290
Document Number _____

City of LODI County of SAN JOAQUIN, California
Brief Legal Description FOUND MONUMENTS ON PINEWOOD COURT



T3N/R6E

CORNER TYPE

- Government Corner
- Meander
- Rancho
- Control
- Property
- Other

Date of Survey March 8, 2021

COORDINATES (Optional)

N. _____ E. _____
 Elevation _____
 Units Metric U.S. Survey Foot
 Horizontal Datum _____
 Zone _____ Epoch Date _____
 Vertical Datum _____
 Complies with Public Resources Code §§8801-8819
 Complies with Public Resources Code §§8890-8902

PLS Act Ref.: 8765(d) 8771 8773 Other:
 Corner/Monument: Left as found Established Rebuilt Pre-Construction
 Found and tagged Reestablished Referenced Post-Construction

Narrative of corner identified and monument as found, set, reset, replaced, or removed:
 See sheet #2 for description(s):

SURVEYOR'S STATEMENT

This Corner Record was prepared by me or under my direction in conformance with
 the Professional Land Surveyors' Act on October 4, 2021
 Signed Scott L. Blake P.L.S. or R.C.E. No. 8489

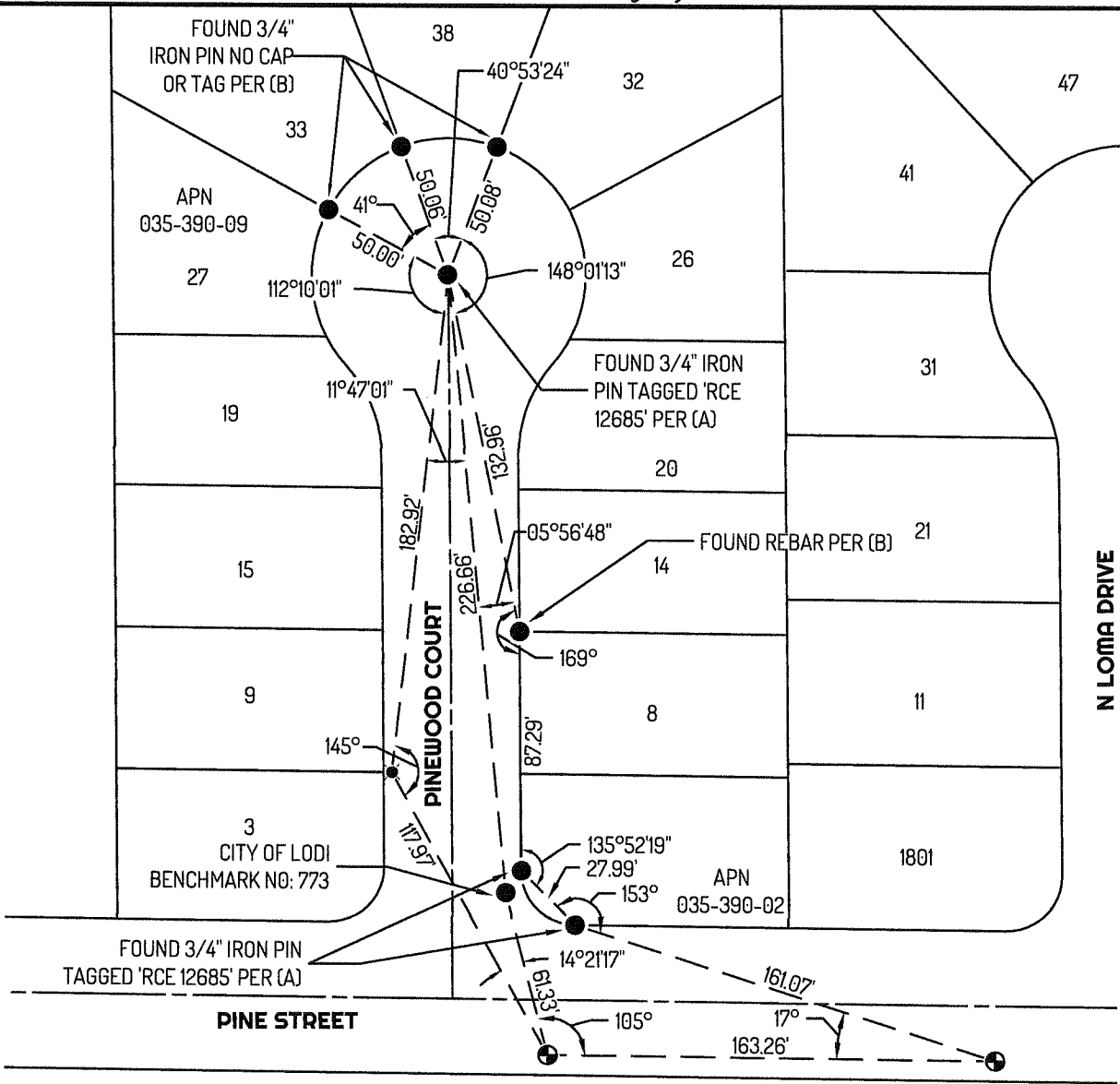


COUNTY SURVEYOR'S STATEMENT

This Corner Record was received November 29, 2022
 and examined and filed December 20, 2022
 Signed James E. Hart P.L.S. or R.C.E. No. 8657
 Title County Surveyor



County Surveyor's Comment



LEGEND

- FOUND MONUMENT AS NOTED
- ⊕ SET CONTROL POINT, 60 D NAIL.
- ⊙ FOUND CUT "X", PER (B)
- 435 REFERENCE STREET ADDRESS
- APN ASSESSOR'S PARCEL NUMBER
- MP MAPS AND PLATS, SAN JOAQUIN COUNTY RECORDS

LINETYPE

- TIE LINE
- LOT LINE
- CENTERLINE

REFERENCES

- (A) 25-MP-124
- (B) MONUMENT NOT OF RECORD

