

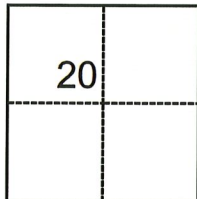
# CORNER RECORD

Agency Index CR-22-287  
Document Number \_\_\_\_\_

City of \_\_\_\_\_ County of SAN JOAQUIN, California  
Brief Legal Description PARCEL 1, P.M. 20-165

### CORNER TYPE

### COORDINATES (Optional)



- Government Corner
- Meander
- Rancho
- Control
- Property
- Other

Date of Survey September 20, 2022

N. \_\_\_\_\_ E. \_\_\_\_\_  
 Elevation \_\_\_\_\_  
 Units  Metric  U.S. Survey Foot  
 Horizontal Datum \_\_\_\_\_  
 Zone \_\_\_\_\_ Epoch Date \_\_\_\_\_  
 Vertical Datum \_\_\_\_\_  
 Complies with Public Resources Code §§8801-8819  
 Complies with Public Resources Code §§8890-8902

T.1N., R.9E., M.D.B.&M.

- PLS Act Ref.:  8765(d)  8771  8773  Other: \_\_\_\_\_
- Corner/Monument:  Left as found  Established  Rebuilt  Pre-Construction  
 Found and tagged  Reestablished  Referenced  Post-Construction

Narrative of corner identified and monument as found, set, reset, replaced, or removed:

See sheet #2 for description(s):

### SURVEYOR'S STATEMENT

This Corner Record was prepared by me or under my direction in conformance with  
 the Professional Land Surveyors' Act on December 1, 2022  
 Signed Joe Murphy P.L.S. or R.C.E. No. 7269

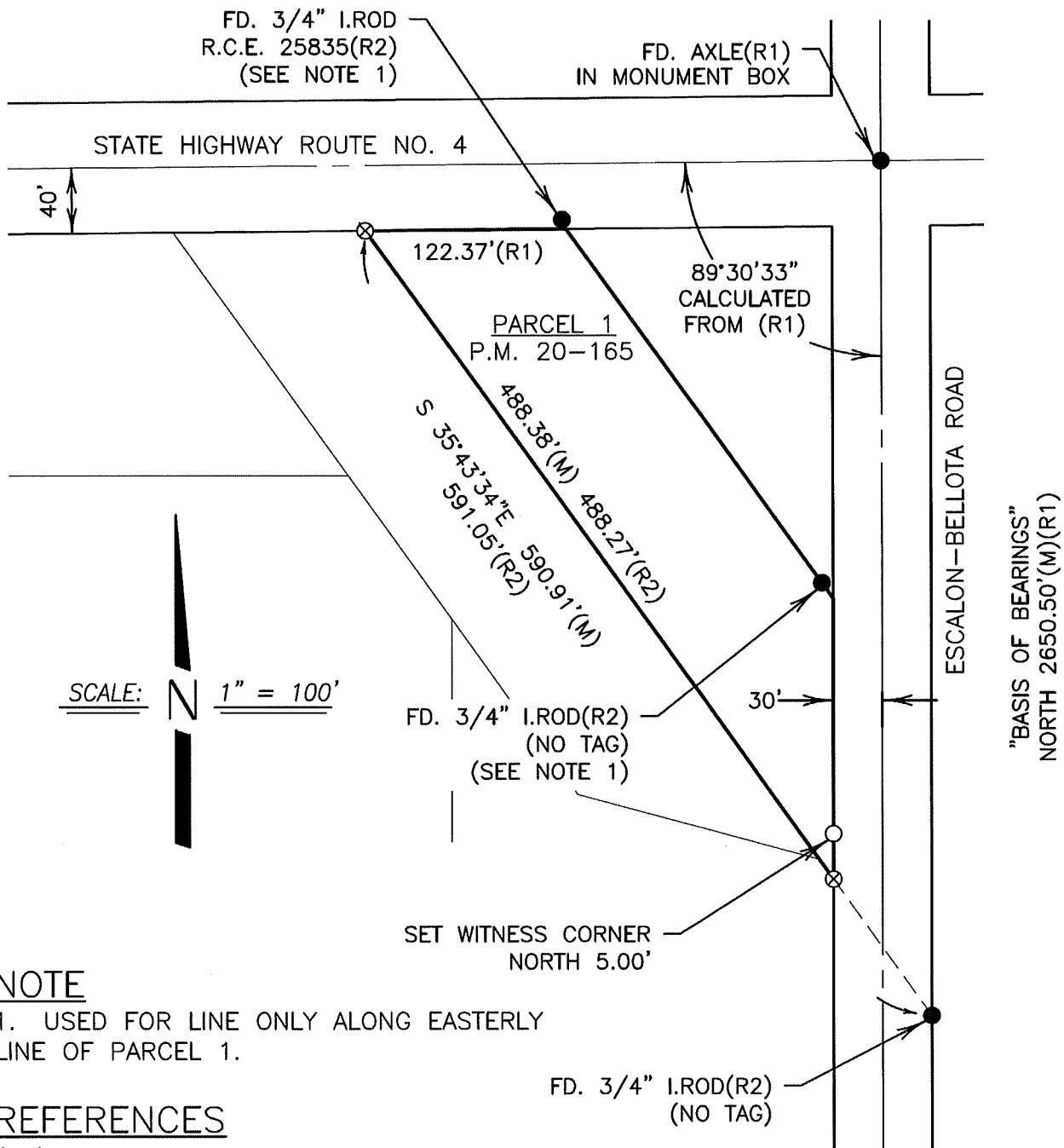


### COUNTY SURVEYOR'S STATEMENT

This Corner Record was received December 2, 2022  
 and examined and filed December 15, 2022  
 Signed James E. Hart P.L.S. or R.C.E. No. 8657  
 Title County Surveyor



County Surveyor's Comment



**NOTE**

1. USED FOR LINE ONLY ALONG EASTERLY LINE OF PARCEL 1.

**REFERENCES**

- (R1) P.M. 21-30, S.J.C.R.
- (R2) P.M. 20-165, S.J.C.R.

**LEGEND**

- S.J.C.R. SAN JOAQUIN COUNTY RECORDS
- FOUND MONUMENT, AS NOTED
- SET 3/4" X 30" IRON ROD, CAPPED L.S. 7269
- FD. FOUND
- P.M. PARCEL MAP
- I.ROD IRON ROD
- I.PIPE IRON PIPE
- ⊗ DIMENSION POINT, NOTHING FOUND OR SET
- C.R. CORNER RECORD, SAN JOAQUIN COUNTY SURVEYOR'S RECORDS
- FD. BOLT & WASHER(R1) IN MONUMENT BOX PER C.R. 01-173