

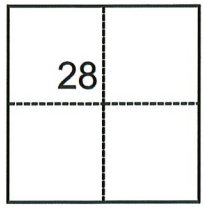
CORNER RECORD

Agency Index CR-22-280
Document Number _____

City of _____ County of SAN JOAQUIN, California
Brief Legal Description Parcel 3, P.M. 19-107

CORNER TYPE

COORDINATES (Optional)



- Government Corner
- Meander
- Rancho
- Control
- Property
- Other

N. _____ E. _____
 Elevation _____
 Units Metric U.S. Survey Foot
 Horizontal Datum _____
 Zone _____ Epoch Date _____
 Vertical Datum _____
 Complies with Public Resources Code §§8801-8819
 Complies with Public Resources Code §§8890-8902

Date of Survey October 28, 2022

T.3N., R.7E., M.D.B.&M.

- PLS Act Ref.: 8765(d) 8771 8773 Other: _____
- Corner/Monument: Left as found Established Rebuilt Pre-Construction
 Found and tagged Reestablished Referenced Post-Construction

Narrative of corner identified and monument as found, set, reset, replaced, or removed:
 See sheet #2 for description(s):

SURVEYOR'S STATEMENT

This Corner Record was prepared by me or under my direction in conformance with
 the Professional Land Surveyors' Act on December 1, 2022
 Signed [Signature] P.L.S. or R.C.E. No. 7269

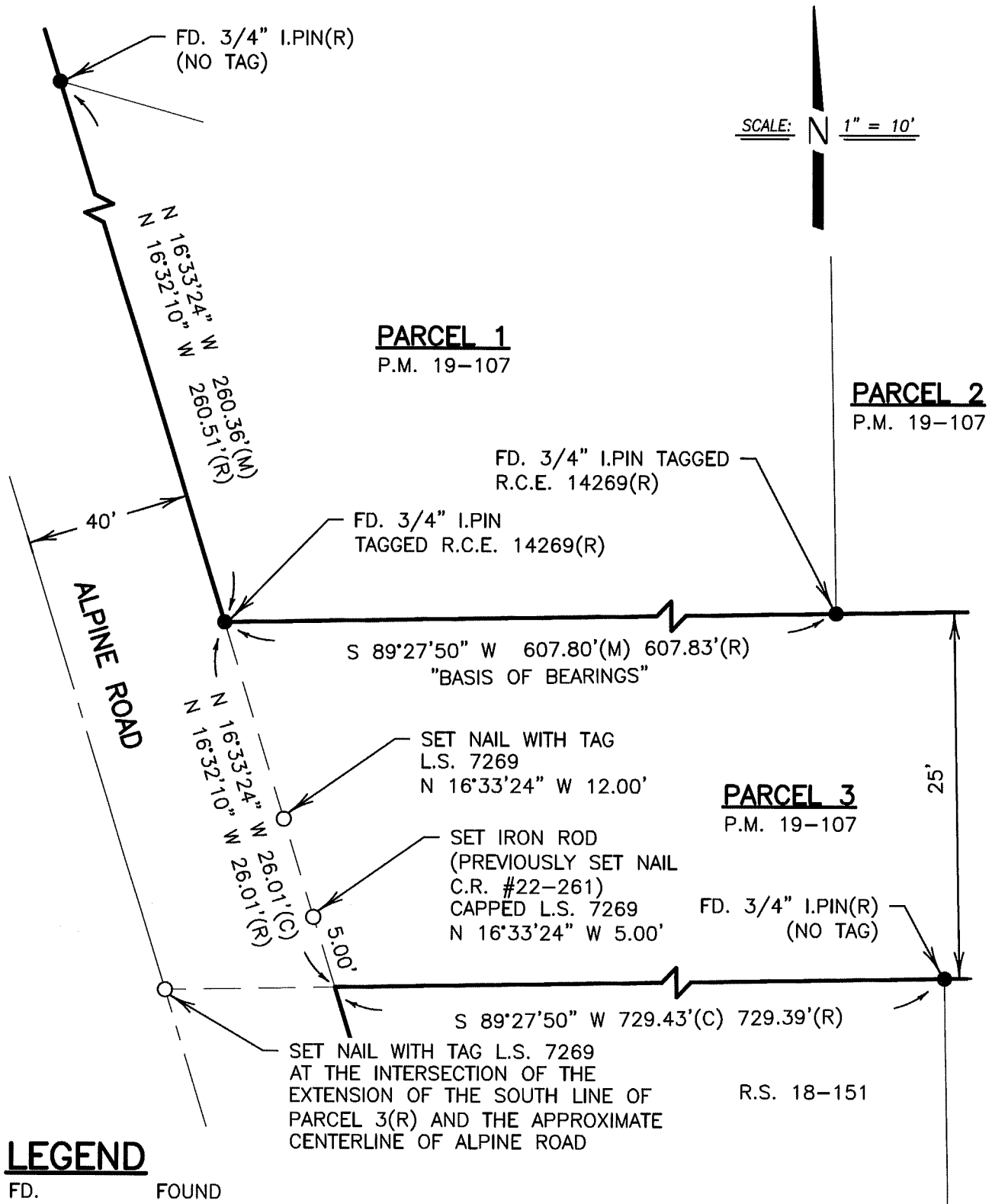


COUNTY SURVEYOR'S STATEMENT

This Corner Record was received December 2, 2022
 and examined and filed December 15, 2022
 Signed James E. Hart P.L.S. or R.C.E. No. 8657
 Title County Surveyor



County Surveyor's Comment



SCALE: N 1" = 10'

PARCEL 1
P.M. 19-107

PARCEL 2
P.M. 19-107

PARCEL 3
P.M. 19-107

LEGEND

- FD. FOUND
- I.PIN IRON PIN
- R.S. RECORD OF SURVEY
- P.M. PARCEL MAP
- S.J.C.R. SAN JOAQUIN COUNTY RECORDS
- (C) CALCULATED
- FOUND MONUMENT AS NOTED
- SET MONUMENT AS NOTED

REFERENCE

(R) P.M. 19-107, S.J.C.R.