

# CORNER RECORD

Agency Index CR-22-285  
Document Number \_\_\_\_\_  
County of SAN JOAQUIN, California

City of LODI

Brief Legal Description INTERSECTION OF GARFIELD STREET AND CONCORD STREET



T.3N, R.6E

### CORNER TYPE

- Government Corner
- Meander
- Rancho
- Control
- Property
- Other

Date of Survey 8/23/2022

### COORDINATES (Optional)

N. \_\_\_\_\_ E. \_\_\_\_\_  
 Elevation \_\_\_\_\_  
 Units  Metric  U.S. Survey Foot  
 Horizontal Datum \_\_\_\_\_  
 Zone \_\_\_\_\_ Epoch Date \_\_\_\_\_  
 Vertical Datum \_\_\_\_\_

- Complies with Public Resources Code §§8801-8819
- Complies with Public Resources Code §§8890-8902

PLS Act Ref:  8765(d)  8771  8773  Other:

Corner/Monument:  Left as found  Established  Rebuilt  Pre-Construction  
 Found and tagged  Reestablished  Referenced  Post-Construction

Narrative of corner identified and monument as found, set, reset, replaced, or removed:

See sheet #2 for description (s):

FOUND 2" IRON PIPE, NO TAG, NO RECORD; SET THREE (3) CONCRETE NAILS WITH BRASS TAG "LS 6953" AS WITNESS CORNERS, ALL AS SHOWN ON SHEET 2.

### SURVEYOR'S STATEMENT

This Corner Record was prepared by me or under my direction in conformance with the Professional Land Surveyors' Act on NOVEMBER 7, 2022

Signed [Signature] P.L.S. or R.C.E. No. 6953



### COUNTY SURVEYOR'S STATEMENT

This Corner Record was received November 9, 2022

and examined and filed December 15, 2022

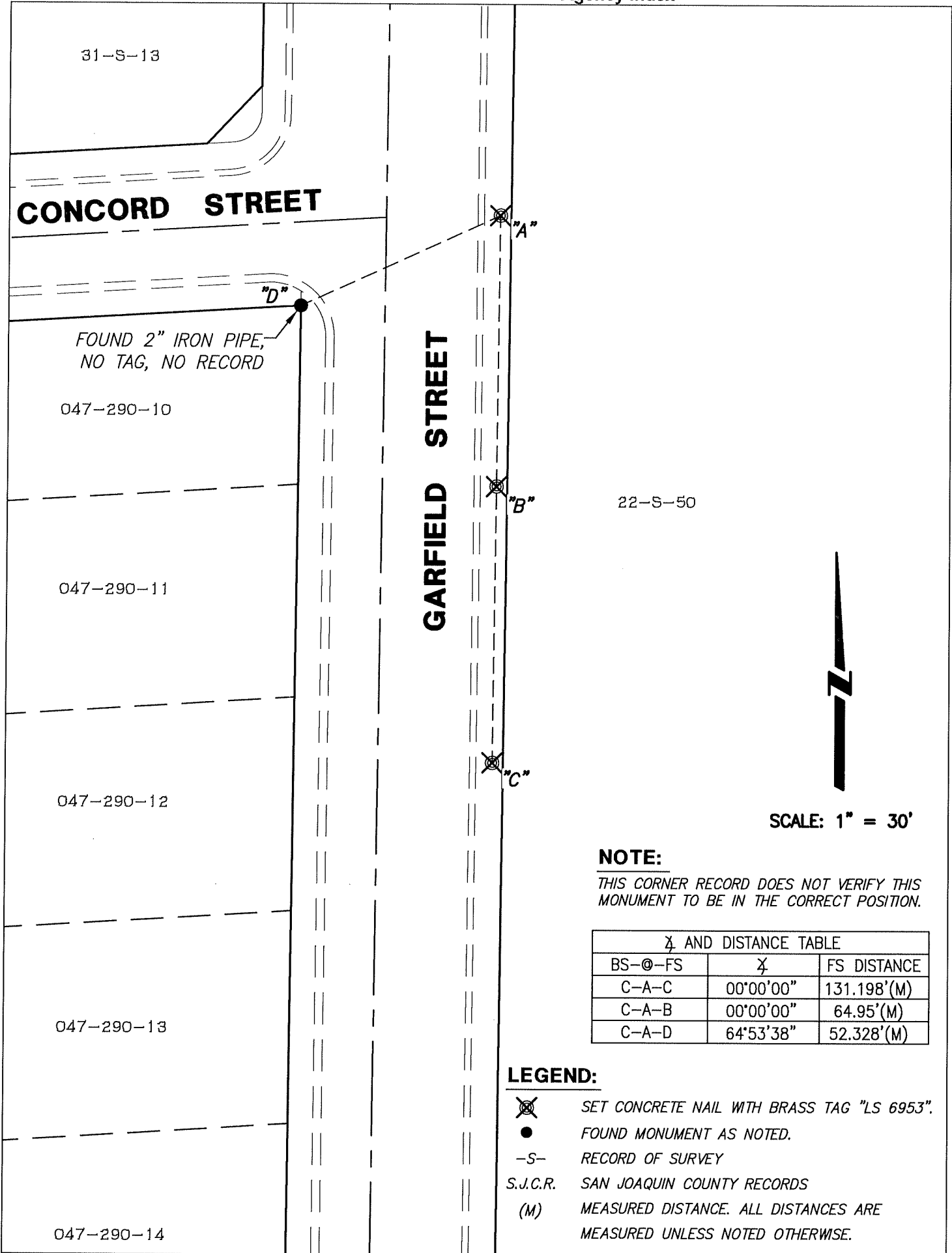
Signed James E. Hart P.L.S. or R.C.E. No. 8657

Title County Surveyor



County Surveyor's Comment \_\_\_\_\_

\_\_\_\_\_  
\_\_\_\_\_  
\_\_\_\_\_



31-S-13

**CONCORD STREET**

FOUND 2" IRON PIPE,  
NO TAG, NO RECORD

047-290-10

047-290-11

047-290-12

047-290-13

047-290-14

**GARFIELD STREET**

"A"

"B"

"C"

"D"

22-S-50



SCALE: 1" = 30'

**NOTE:**

THIS CORNER RECORD DOES NOT VERIFY THIS MONUMENT TO BE IN THE CORRECT POSITION.

| X AND DISTANCE TABLE |           |             |
|----------------------|-----------|-------------|
| BS-@-FS              | X         | FS DISTANCE |
| C-A-C                | 00°00'00" | 131.198'(M) |
| C-A-B                | 00°00'00" | 64.95'(M)   |
| C-A-D                | 64°53'38" | 52.328'(M)  |

**LEGEND:**

- SET CONCRETE NAIL WITH BRASS TAG "LS 6953".
- FOUND MONUMENT AS NOTED.
- S- RECORD OF SURVEY
- S.J.C.R. SAN JOAQUIN COUNTY RECORDS
- (M) MEASURED DISTANCE. ALL DISTANCES ARE MEASURED UNLESS NOTED OTHERWISE.