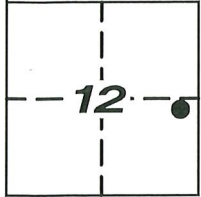


# CORNER RECORD

Agency Index CR-22-284  
Document Number \_\_\_\_\_  
County of SAN JOAQUIN, California

City of LODI

Brief Legal Description INTERSECTION OF VINE STREET AND GARFIELD STREET



T.3N, R.6E

### CORNER TYPE

- Government Corner
- Meander
- Rancho
- Control
- Property
- Other

Date of Survey 8/23/2022

### COORDINATES (Optional)

N. \_\_\_\_\_ E. \_\_\_\_\_  
 Elevation \_\_\_\_\_  
 Units  Metric  U.S. Survey Foot  
 Horizontal Datum \_\_\_\_\_  
 Zone \_\_\_\_\_ Epoch Date \_\_\_\_\_  
 Vertical Datum \_\_\_\_\_

- Complies with Public Resources Code §§8801-8819
- Complies with Public Resources Code §§8890-8902

PLS Act Ref:  8765(d)  8771  8773  Other:

Corner/Monument:  Left as found  Established  Rebuilt  Pre-Construction  
 Found and tagged  Reestablished  Referenced  Post-Construction

Narrative of corner identified and monument as found, set, reset, replaced, or removed:

See sheet #2 for description (s):

FOUND 2 1/2" BRASS DISK IN TOP OF CURB STAMPED "CITY OF LODI BENCHMARK" 898 PER (R3); FOUND TWO (2) 1" IRON PINS, NO TAG PER (R2); FOUND 1/2" IRON PIN, NO TAG; SET THREE (3) CONCRETE NAILS WITH BRASS TAG "LS 6953" AS WITNESS CORNERS, ALL AS SHOWN ON SHEET 2.

### SURVEYOR'S STATEMENT

This Corner Record was prepared by me or under my direction in conformance with the Professional Land Surveyors' Act on NOVEMBER 29, 2022

Signed [Signature] P.L.S. or R.C.E. No. 6953



### COUNTY SURVEYOR'S STATEMENT

This Corner Record was received December 2, 2022

and examined and filed December 15, 2022

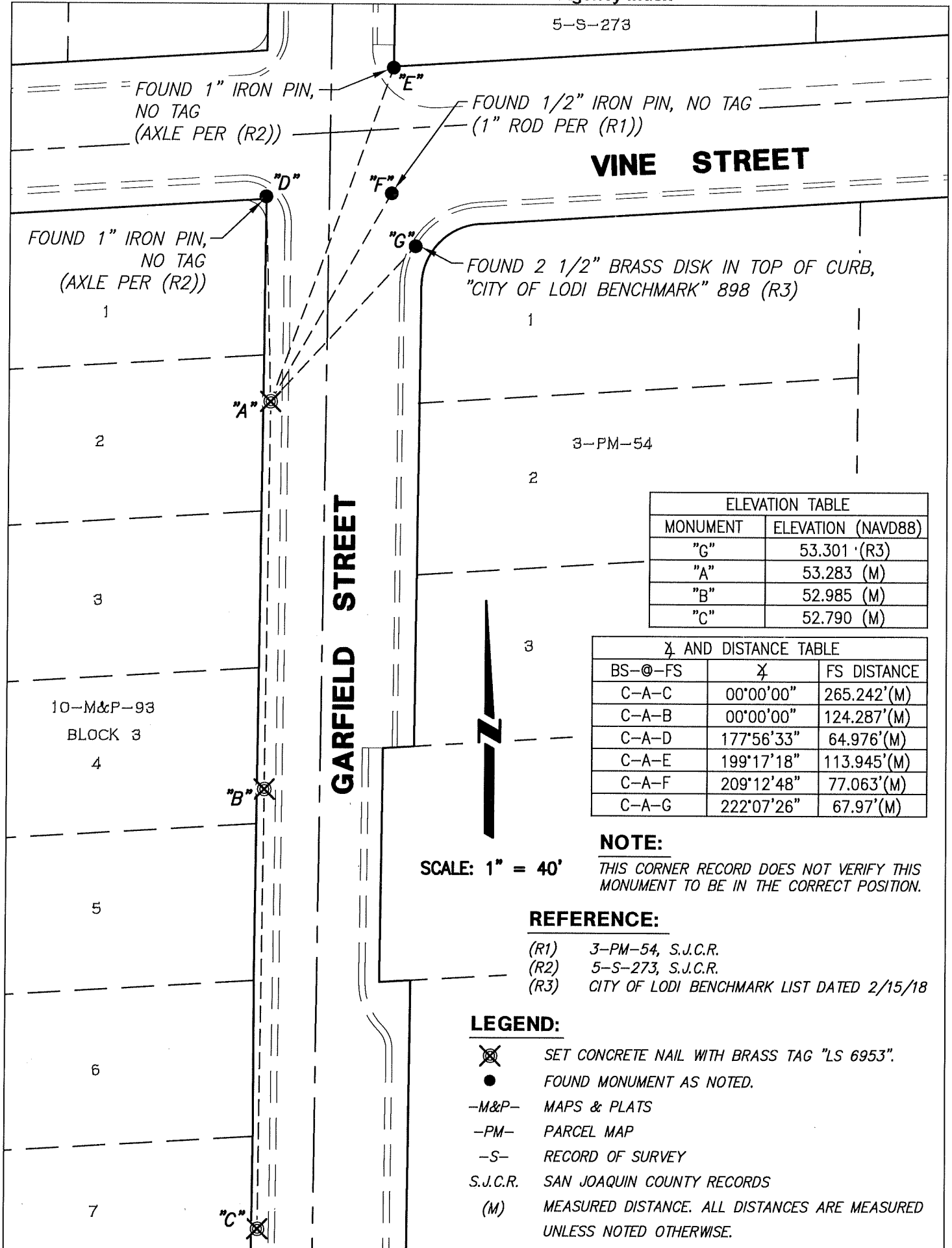
Signed [Signature] P.L.S. or R.C.E. No. 8657

Title County Surveyor



County Surveyor's Comment \_\_\_\_\_  
\_\_\_\_\_  
\_\_\_\_\_

5-S-273



FOUND 1" IRON PIN,  
NO TAG  
(AXLE PER (R2))

FOUND 1/2" IRON PIN, NO TAG  
(1" ROD PER (R1))

FOUND 1" IRON PIN,  
NO TAG  
(AXLE PER (R2))

FOUND 2 1/2" BRASS DISK IN TOP OF CURB,  
"CITY OF LODI BENCHMARK" 898 (R3)

**VINE STREET**

**GARFIELD STREET**

ELEVATION TABLE	
MONUMENT	ELEVATION (NAVD88)
"G"	53.301 (R3)
"A"	53.283 (M)
"B"	52.985 (M)
"C"	52.790 (M)

AZ AND DISTANCE TABLE		
BS-@-FS	AZ	FS DISTANCE
C-A-C	00°00'00"	265.242'(M)
C-A-B	00°00'00"	124.287'(M)
C-A-D	177°56'33"	64.976'(M)
C-A-E	199°17'18"	113.945'(M)
C-A-F	209°12'48"	77.063'(M)
C-A-G	222°07'26"	67.97'(M)



SCALE: 1" = 40'

**NOTE:**

THIS CORNER RECORD DOES NOT VERIFY THIS MONUMENT TO BE IN THE CORRECT POSITION.

**REFERENCE:**

- (R1) 3-PM-54, S.J.C.R.
- (R2) 5-S-273, S.J.C.R.
- (R3) CITY OF LODI BENCHMARK LIST DATED 2/15/18

**LEGEND:**

- ⊗ SET CONCRETE NAIL WITH BRASS TAG "LS 6953".
- FOUND MONUMENT AS NOTED.
- M&P- MAPS & PLATS
- PM- PARCEL MAP
- S- RECORD OF SURVEY
- S.J.C.R. SAN JOAQUIN COUNTY RECORDS
- (M) MEASURED DISTANCE. ALL DISTANCES ARE MEASURED UNLESS NOTED OTHERWISE.