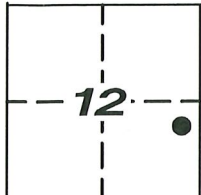


CORNER RECORD

Agency Index CR-22-280
Document Number _____
County of SAN JOAQUIN, California

City of LODI

Brief Legal Description INTERSECTION OF GARFIELD STREET AND MISSION STREET



T.3N, R.6E

CORNER TYPE

- Government Corner
- Meander
- Rancho
- Control
- Property
- Other

Date of Survey 8/23/2022

COORDINATES (Optional)

N. _____ E. _____
 Elevation _____
 Units Metric U.S. Survey Foot
 Horizontal Datum _____
 Zone _____ Epoch Date _____
 Vertical Datum _____

- Complies with Public Resources Code §§8801-8819
- Complies with Public Resources Code §§8890-8902

PLS Act Ref: 8765(d) 8771 8773 Other:

Corner/Monument: Left as found Established Rebuilt Pre-Construction
 Found and tagged Reestablished Referenced Post-Construction

Narrative of corner identified and monument as found, set, reset, replaced, or removed:

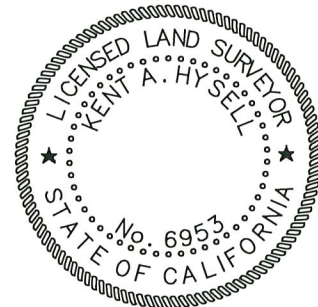
See sheet #2 for description (s):

FOUND 1" IRON PIN, NO TAG PER (R1); SET THREE (3) CONCRETE NAILS WITH BRASS TAG "LS 6953" AS WITNESS CORNERS, ALL AS SHOWN ON SHEET 2.

SURVEYOR'S STATEMENT

This Corner Record was prepared by me or under my direction in conformance with the Professional Land Surveyors' Act on NOVEMBER 29, 2022

Signed [Signature] P.L.S. or R.C.E. No. 6953



COUNTY SURVEYOR'S STATEMENT

This Corner Record was received December 2, 2022

and examined and filed December 15, 2022

Signed James E. Hart P.L.S. or R.C.E. No. 8657

Title County Surveyor



County Surveyor's Comment _____

LEGEND:

- ⊗ SET CONCRETE NAIL WITH BRASS TAG "LS 6953".
- FOUND MONUMENT AS NOTED.
- M&P- MAP & PLATS
- S- RECORD OF SURVEY
- S.J.C.R. SAN JOAQUIN COUNTY RECORDS
- (M) MEASURED DISTANCE. ALL DISTANCES ARE MEASURED UNLESS NOTED OTHERWISE.

∠ AND DISTANCE TABLE		
BS-@-FS	∠	FS DISTANCE
C-A-C	00°00'00"	248.854'(M)
C-A-B	00°00'00"	124.597'(M)
C-A-D	181°47'59"	81.607'(M)

NOTE:

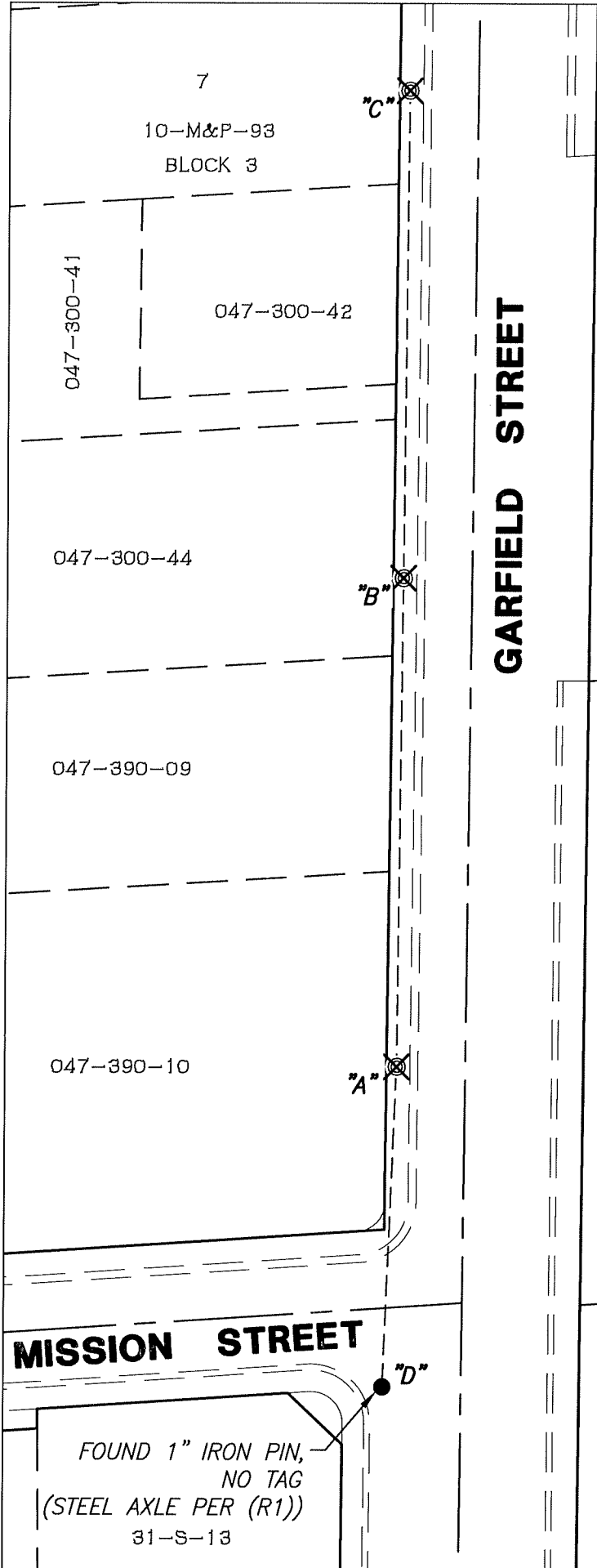
THIS CORNER RECORD DOES NOT VERIFY THIS MONUMENT TO BE IN THE CORRECT POSITION.

REFERENCE:

(R1) 4-S-273, S.J.C.R.

GARFIELD STREET

MISSION STREET



SCALE: 1" = 40'