

CORNER RECORD

Agency Index CR-22-276

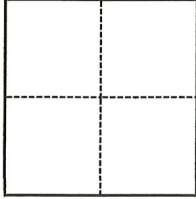
Document Number _____

City of RIPON County of SAN JOAQUIN, California

Brief Legal Description LOT 4 OF TRACT NO. 3710, BOOK 41, MAPS AND PLATS, PAGE 61

CORNER TYPE

COORDINATES (Optional)



- Government Corner
- Meander
- Rancho
- Control
- Property
- Other

Date of Survey October 18, 2022

N. _____ E. _____

Elevation _____

Units Metric U.S. Survey Foot

Horizontal Datum _____

Zone _____ Epoch Date _____

Vertical Datum _____

Complies with Public Resources Code §§8801-8819

Complies with Public Resources Code §§8890-8902

T.2S., R.8E., SEC 19

PLS Act Ref.: 8765(d) 8771 8773 Other:

Corner/Monument: Left as found Established Rebuilt Pre-Construction

Found and tagged Reestablished Referenced Post-Construction

Narrative of corner identified and monument as found, set, reset, replaced, or removed:

See sheet #2 for description(s):

MONUMENTS REPLACED AFTER CONSTRUCTION.

SURVEYOR'S STATEMENT

This Corner Record was prepared by me or under my direction in conformance with

the Professional Land Surveyors' Act on November 11, 2022

Signed [Signature] P.L.S. or R.C.E. No. 8656



COUNTY SURVEYOR'S STATEMENT

This Corner Record was received November 22, 2022

and examined and filed December 2, 2022

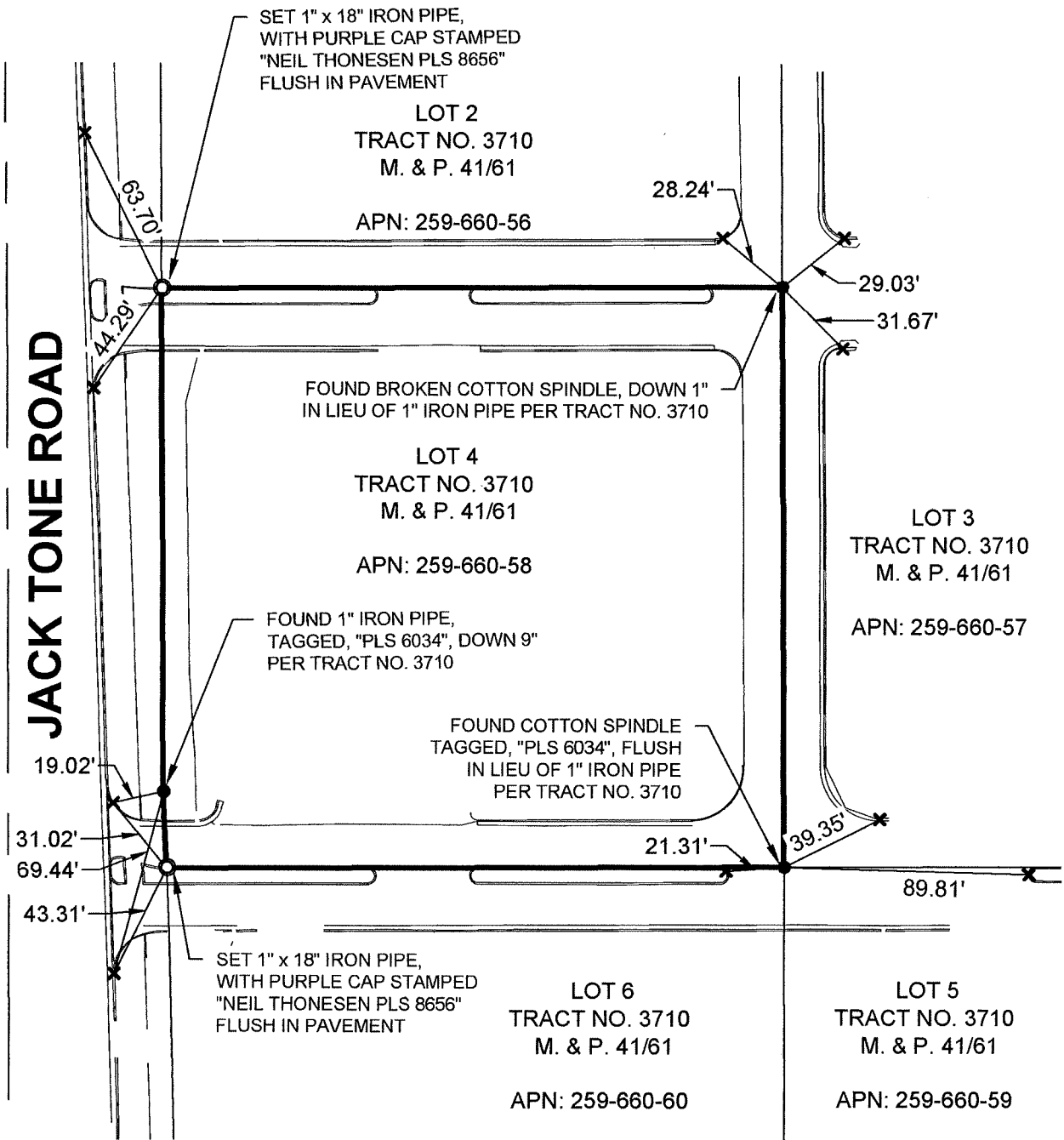
Signed James E Hart P.L.S. or R.C.E. No. 8657

Title County Surveyor

County Surveyor's Comment



JACK TONE ROAD



LEGEND:

- FOUND AND ACCEPTED MONUMENT AS NOTED
- ✕ FOUND CUT CROSS IN TOP OF CURB AS REFERENCE TO MONUMENT PER CR 21-111
- SET MONUMENT AS DESCRIBED

