

CORNER RECORD

Agency Index CR-22-275

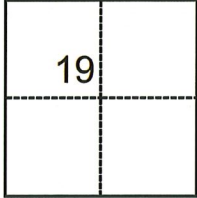
Document Number _____

City of _____ County of SAN JOAQUIN, California

Brief Legal Description P.M. 25-62

CORNER TYPE

COORDINATES (Optional)



- Government Corner
- Meander
- Rancho
- Control
- Property
- Other

Date of Survey September 20, 2022

N. _____ E. _____

Elevation _____

Units Metric U.S. Survey Foot

Horizontal Datum _____

Zone _____ Epoch Date _____

Vertical Datum _____

Complies with Public Resources Code §§8801-8819

Complies with Public Resources Code §§8890-8902

T.3N., R.8E., M.D.B.&M.

PLS Act Ref.: 8765(d) 8771 8773 Other:

Corner/Monument: Left as found Established Rebuilt Pre-Construction

Found and tagged Reestablished Referenced Post-Construction

Narrative of corner identified and monument as found, set, reset, replaced, or removed:

See sheet #2 for description(s):

SURVEYOR'S STATEMENT

This Corner Record was prepared by me or under my direction in conformance with the Professional Land Surveyors' Act on November 8, 2022

Signed [Signature] P.L.S. or R.C.E. No. 7269



COUNTY SURVEYOR'S STATEMENT

This Corner Record was received November 10, 2022

and examined and filed November 18, 2022

Signed James E. Hart P.L.S. or R.C.E. No. 8657

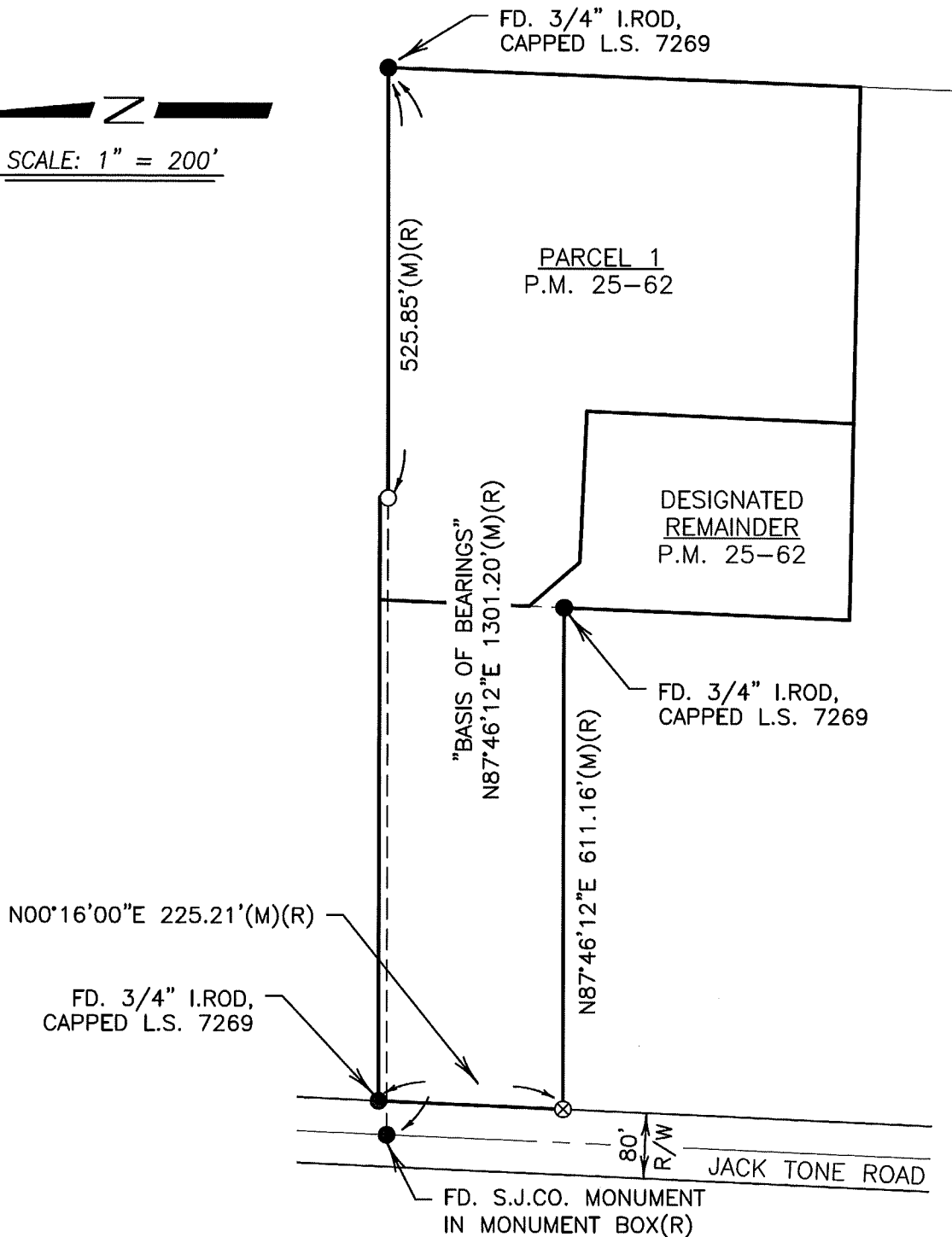
Title County Surveyor

County Surveyor's Comment





SCALE: 1" = 200'



LEGEND

- S.J.C.R. SAN JOAQUIN COUNTY RECORDS
- FOUND MONUMENT, AS NOTED
- SET 3/4" X 30" IRON ROD, CAPPED L.S. 7269
- ⊗ SET NAIL WITH BRASS TAG L.S. 7269
- FD. FOUND
- P.M. PARCEL MAP
- I.ROD IRON ROD

REFERENCE

(R) P.M. 25-62, S.J.C.R.