

CORNER RECORD

Agency Index CR-22-274

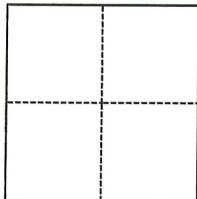
Document Number _____

City of _____ County of SAN JOAQUIN, California

Brief Legal Description 1.00 ACRE PROPERTY AS SHOWN ON RS 14-24

CORNER TYPE

COORDINATES (Optional)



- Government Corner
- Meander
- Rancho
- Control
- Property
- Other

N. _____ E. _____

Elevation _____

Units Metric U.S. Survey Foot

Horizontal Datum _____

Zone _____ Epoch Date _____

Vertical Datum _____

Complies with Public Resources Code §§8801-8819

Complies with Public Resources Code §§8890-8902

PLS Act Ref.: 8765(d) 8771 8773 Other:

Corner/Monument: Left as found Established Rebuilt Pre-Construction

Found and tagged Reestablished Referenced Post-Construction

Narrative of corner identified and monument as found, set, reset, replaced, or removed:

See sheet #2 for description(s):

CORNER RECORD TO REESTABLISH PROPERTY CORNERS WHICH WERE OBLITERATED.

SURVEYOR'S STATEMENT

This Corner Record was prepared by me or under my direction in conformance with

the Professional Land Surveyors' Act on November 8, 2022

Signed [Signature] P.L.S. or R.C.E. No. LS 7600



COUNTY SURVEYOR'S STATEMENT

This Corner Record was received November 9, 2022

and examined and filed November 18, 2022

Signed James E Hart P.L.S. or R.C.E. No. 8657

Title County Surveyor

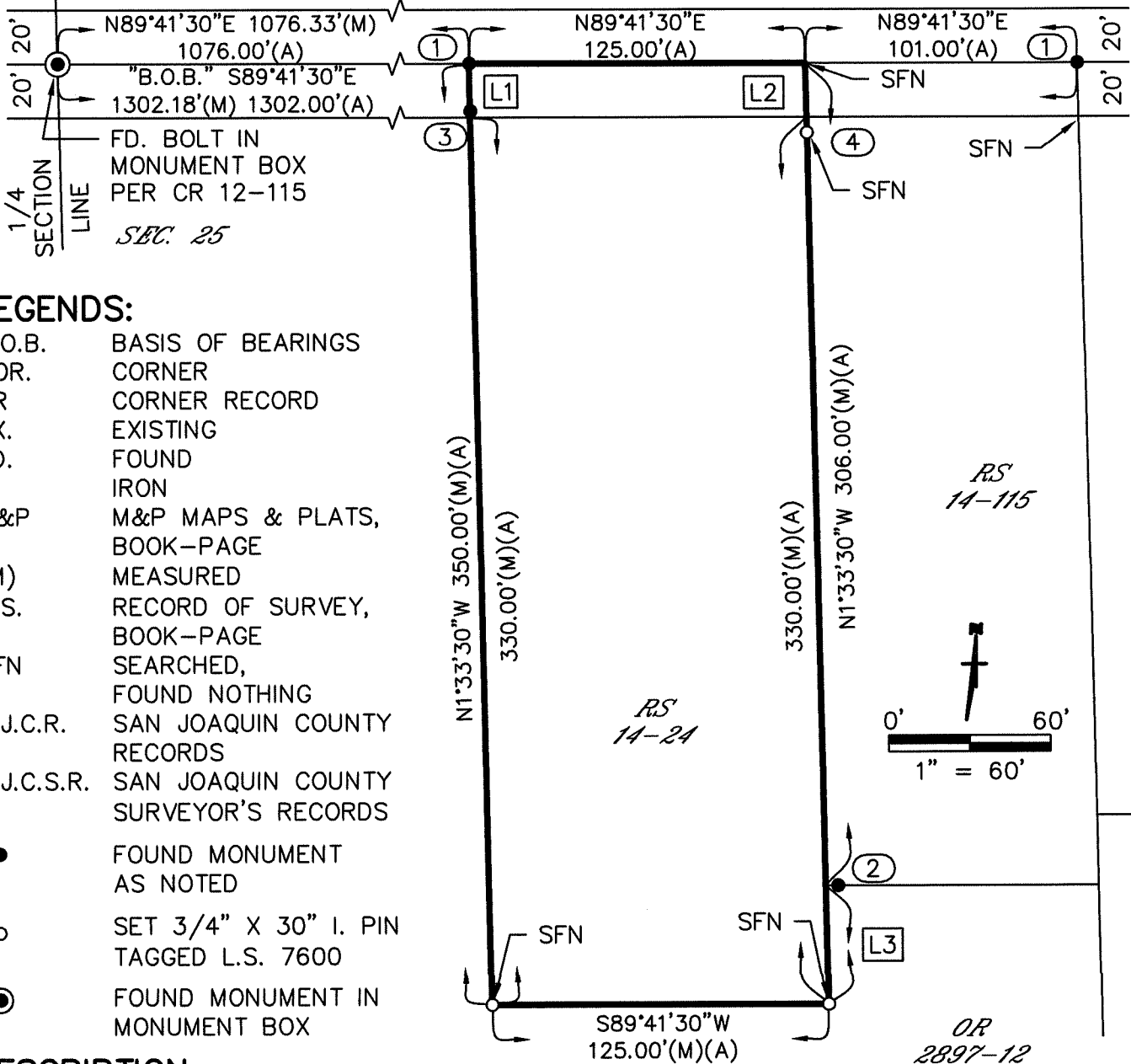
County Surveyor's Comment



DES MOINES ROAD

SEC. 24

ACAMPO ROAD



LEGENDS:

- B.O.B. BASIS OF BEARINGS
- COR. CORNER
- CR CORNER RECORD
- EX. EXISTING
- FD. FOUND
- I IRON
- M&P M&P MAPS & PLATS, BOOK-PAGE
- (M) MEASURED
- R.S. RECORD OF SURVEY, BOOK-PAGE
- SFN SEARCHED, FOUND NOTHING
- S.J.C.R. SAN JOAQUIN COUNTY RECORDS
- S.J.C.S.R. SAN JOAQUIN COUNTY SURVEYOR'S RECORDS
- FOUND MONUMENT AS NOTED
- SET 3/4" X 30" I. PIN TAGGED L.S. 7600
- ⊙ FOUND MONUMENT IN MONUMENT BOX

DESCRIPTION:

THIS DOCUMENT IS FOR THE PURPOSE OF RESETTING ANY MISSING OR OBLITERATED CORNERS FROM 1.00-ACRE PARCEL, AS SHOWN IN BOOK 14 OF SURVEYS, PAGE 24, SAN JOAQUIN COUNTY RECORDS.

REFERENCES:

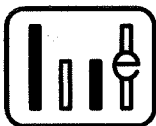
- (A) R.S. 14-24, S.J.C.R.
- (B) R.S. 14-115, S.J.C.R.
- (C) CR-12-120, S.J.C.S.R.

NOTES:

- ① FD. PK NAIL/WASHER TAGGED SAN JOAQUIN COUNTY (C)
- ② FD. 3/4" I. PIN (B). N89°41'30"E, 0.30' FROM PROPERTY CORNER
- ③ FD. 1" I. PIPE. NO TAG (A). N1°33'30"W, 0.09' FROM PROPERTY CORNER.
- ④ SET 3/4" I. PIN TAGGED L.S. 7600 S1°33'30"W, 2.00'(A) FROM PROPERTY CORNER.

LINE TABLE

L#	BEARING	DISTANCE
L1	N01°33'30"W	20'(M)(A)
L2	S01°33'30"E	20'(M)(A)
L3	N01°33'30"W	44.00'(M)(B)



WONG ENGINEERS, INC.
 4578 FEATHER RIVER DRIVE, SUITE A
 STOCKTON, CALIFORNIA (209) 476-0011
 NOVEMBER 8, 2022 2 OF 2