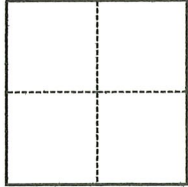


# CORNER RECORD

Agency Index CR-22-272

Document Number \_\_\_\_\_

City of Unincorporated County of San Joaquin, CaliforniaBrief Legal Description Lots 3-6, Green Subdivision, M.&P. 13-44, S.J.C.R.**CORNER TYPE****COORDINATES (Optional)**

- Government Corner     Control  
 Meander                 Property  
 Rancho                     Other

N. \_\_\_\_\_ E. \_\_\_\_\_

Elevation \_\_\_\_\_

Units     Metric     U.S. Survey Foot

Horizontal Datum \_\_\_\_\_

Zone \_\_\_\_\_ Epoch Date \_\_\_\_\_

Vertical Datum \_\_\_\_\_

 Complies with Public Resources Code §§8801-8819 Complies with Public Resources Code §§8890-8902

PLS Act Ref.:

 8765(d) 8771 8773 Other:Corner/  
Monument: Left as found Established Rebuilt Pre-Construction Found and tagged Reestablished Referenced Post-Construction

Narrative of corner identified and monument as found, set, reset, replaced, or removed:

 See sheet #2 for description(s):**SURVEYOR'S STATEMENT**

This Corner Record was prepared by me or under my direction in conformance with

the Professional Land Surveyors' Act on October 30, 2022

Signed \_\_\_\_\_

P.L.S. or R.C.E. No. \_\_\_\_\_

8080**COUNTY SURVEYOR'S STATEMENT**This Corner Record was received November 4, 2022and examined and filed November 15, 2022

Signed \_\_\_\_\_

P.L.S. or R.C.E. No. \_\_\_\_\_

8657

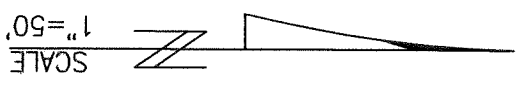
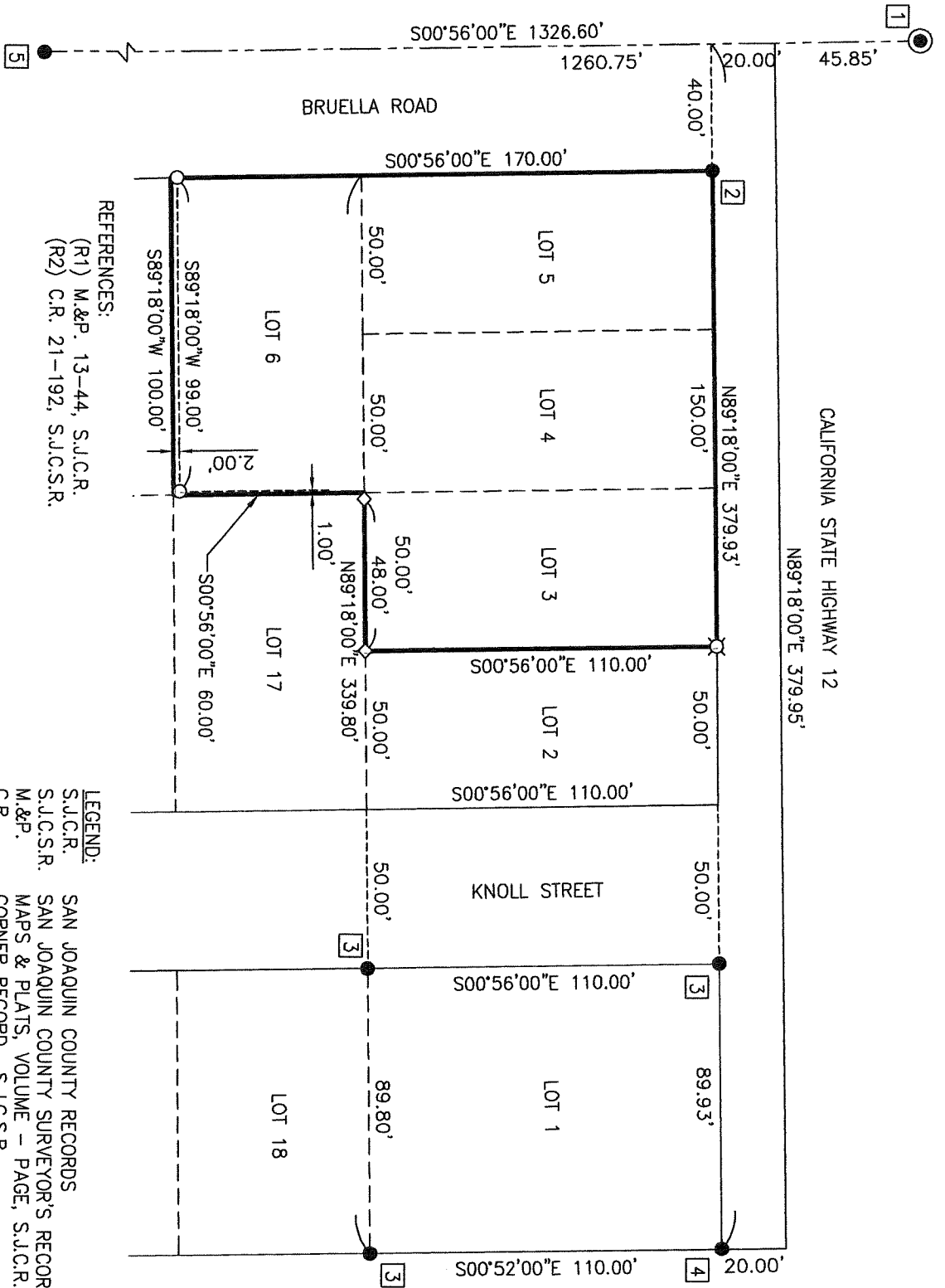
Title \_\_\_\_\_

County Surveyor

County Surveyor's Comment \_\_\_\_\_



CALIFORNIA STATE HIGHWAY 12  
N89°18'00"E 379.95'



REFERENCES:

- (R1) M.&P. 13-44, S.J.C.R.
- (R2) C.R. 21-192, S.J.C.S.R.

LEGEND:

- S.J.C.R.
- S.J.C.S.R.
- M.&P.
- C.R.
- FD.
- FOUND MONUMENT AS NOTED
- FOUND MONUMENT IN MONUMENT WELL AS NOTED
- SET 3/4" BY 30" LONG REBAR WITH PLASTIC CAP
- STAMPED "PLS 8080"
- SET COTTON SPINDLE WITH ALUMINUM WASHER
- STAMPED "PLS 8080"
- SET BRASS TAG IN CONCRETE STAMPED "PLS 8080"

FOUND MONUMENT TABLE:

1	FOUND 1-1/4" SQUARE BOLT PER (R2)
2	FOUND 1" IRON ROD NO TAG. ACCEPTED PER (R1)&(R2)
3	FOUND 3/4" IRON ROD WITH PLASTIC CAP STAMPED "L.S. 7269" PER (R2)
4	FOUND 1" IRON ROD TAGGED "L.S. 2273" ACCEPTED PER (R1)&(R2)
5	FOUND 1" IRON ROD NO TAG. ACCEPTED PER (R1)