

# CORNER RECORD

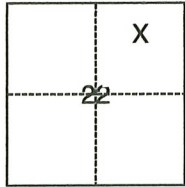
Agency Index CR-22-270  
Document Number \_\_\_\_\_

City of STOCKTON County of SAN JOAQUIN, California

Brief Legal Description FOUND MONUMENTS NEAR THE EAST SIDE OF GEORGIA AVENUE AND WEST SIDE OF LEVER BOULEVARD

### CORNER TYPE

### COORDINATES (Optional)



- Government Corner
- Meander
- Rancho
- Control
- Property
- Other

N. \_\_\_\_\_ E. \_\_\_\_\_

Elevation \_\_\_\_\_

Units  Metric  U.S. Survey Foot

Horizontal Datum \_\_\_\_\_

Zone \_\_\_\_\_ Epoch Date \_\_\_\_\_

Vertical Datum \_\_\_\_\_

Complies with Public Resources Code §§8801-8819

Complies with Public Resources Code §§8890-8902

Date of Survey July 5, 2021

T1N/R6E

PLS Act Ref.:  8765(d)  8771  8773  Other:

Corner/Monument:  Left as found  Established  Rebuilt  Pre-Construction  
 Found and tagged  Reestablished  Referenced  Post-Construction

Narrative of corner identified and monument as found, set, reset, replaced, or removed:

See sheet #2 for description(s):

### SURVEYOR'S STATEMENT

This Corner Record was prepared by me or under my direction in conformance with

the Professional Land Surveyors' Act on October 4, 2021

Signed [Signature] P.L.S. or R.C.E. No. 8489



### COUNTY SURVEYOR'S STATEMENT

This Corner Record was received October 13, 2022

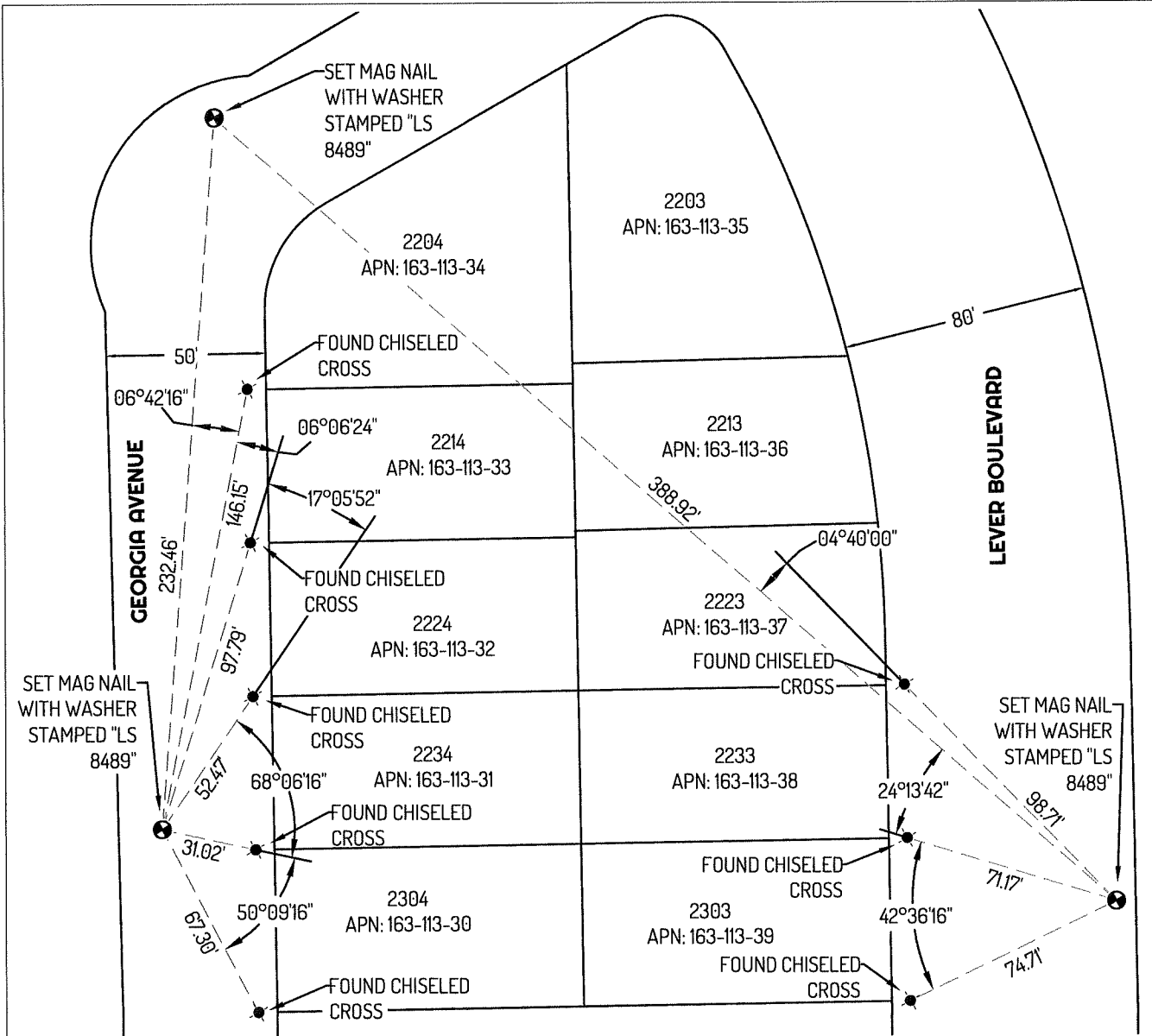
and examined and filed November 7, 2022.

Signed [Signature] P.L.S. or R.C.E. No. 8657

Title County Surveyor

County Surveyor's Comment





**LEGEND**

- SET CONTROL POINT LABELED "LS 8489"
- FOUND CHISELED CROSS
- 435 REFERENCE STREET ADDRESS
- APN ASSESSOR'S PARCEL NUMBER
- PM PARCEL MAP, SAN JOAQUIN COUNTY RECORDS

**LINETYPES**

- TIE LINE
- LOT LINE

**REFERENCES**

- (A) 9-PM-75

