

CORNER RECORD

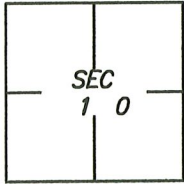
Agency Index CR-22-266

Document Number _____

City of STOCKTON

County of SAN JOAQUIN, California

Brief Legal Description FOUND MONUMENT SHOWN IN BOOK 27 OF MAPS AND PLATS PAGE 74



C.M. WEBER
GRANT

CORNER TYPE

- Government Corner Control
 Meander Property
 Rancho Other

Date of Survey 2021/09/28

COORDINATES (Optional)

N. _____ E. _____

Elevation _____

Units Metric U.S. Survey Foot

Horizontal Datum _____

Zone _____ Epoch Date _____

Vertical Datum: _____

Complies with Public Resources Code §§8801-8819

Complies with Public Resources Code §§8890-8902

PLS Act Ref.: 8765(d) 8771 8773

Other: _____

Corner/Monument: Left as found Established Rebuilt Pre-Construction
 Found and tagged Reestablished Referenced Post-Construction

Narrative of corner identified and monument as found and set or reset:
 See sheet #2 for description(s):

SURVEYOR'S STATEMENT

This Corner Record was prepared by me or under my direction in conformance with the Professional Land Surveyor's Act on 10 November, 2021.

Signed Scott L. Blake

P.L.S. or R.C.E. No. 8489



COUNTY SURVEYOR'S STATEMENT

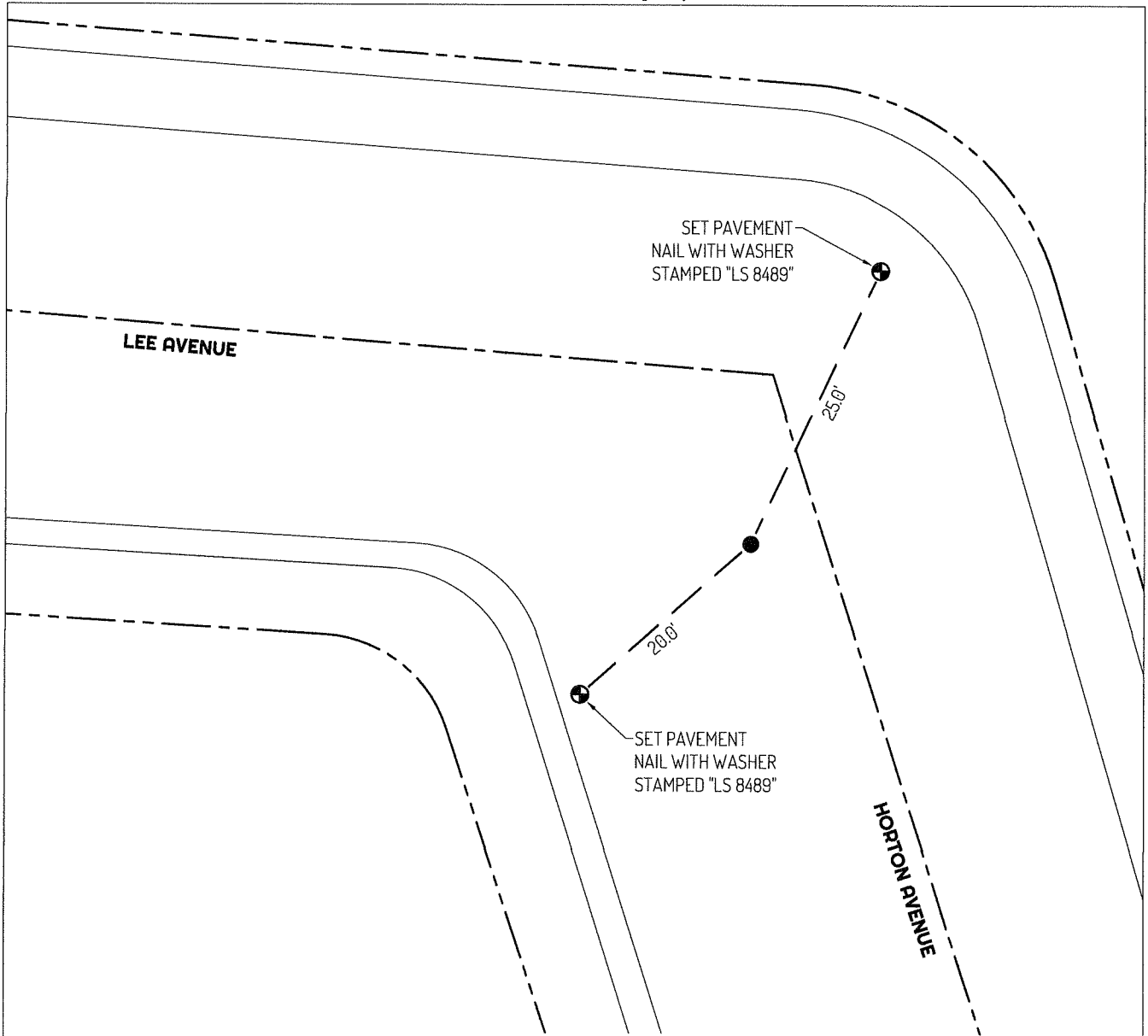
This Corner Record was received October 13, 2022
 and examined and filed November 7, 2022

Signed James E. Hart
 Title County Surveyor

P.L.S. or R.C.E. No. 8657



County Surveyor's Comment



LEGEND

- FOUND 3/4" IRON ROD IN CENTERLINE WELL (A) NO CAP OR TAG
- ⊕— SET CONTROL POINT
- 955 ASSESSOR'S PARCEL NUMBER
- MP MAPS AND PLATS, SAN JOAQUIN COUNTY RECORDS

LINETYPES

- CENTERLINE
- TIE LINE
- EDGE OF PAVEMENT
- BACK OF SIDEWALK
- PROPERTY LINE

REFERENCE

(A) MP 27-074



SCALE
NOT TO SCALE