

# CORNER RECORD

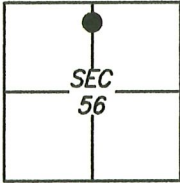
Agency Index CR-22-262

Document Number \_\_\_\_\_

City of \_\_\_\_\_

County of SAN JOAQUIN, California

Brief Legal Description FOUND MONUMENT AT SOUTHWEST CORNER OF PARCEL A PER RECORD OF SURVEY  
IN BOOK 23 OF SURVEYS PAGE 71.



C.M. WEBER  
GRANT

### CORNER TYPE

- Government Corner  Control
- Meander  Property
- Rancho  Other

Date of Survey 2021/04/28

### COORDINATES (Optional)

- N. \_\_\_\_\_ E. \_\_\_\_\_
- Elevation \_\_\_\_\_
- Units Metric  U.S. Survey Foot
- Horizontal Datum \_\_\_\_\_
- Zone \_\_\_\_\_ Epoch Date \_\_\_\_\_
- Vertical Datum: \_\_\_\_\_
- Complies with Public Resources Code §§8801-8819
- Complies with Public Resources Code §§8890-8902

PLS Act Ref.:  8765(d)  8771  8773 Other: \_\_\_\_\_

Corner/Monument:  Left as found  Established  Rebuilt  Pre-Construction  
 Found and tagged  Reestablished  Referenced  Post-Construction

Narrative of corner identified and monument as found and set or reset:  
 See sheet #2 for description(s):

### SURVEYOR'S STATEMENT

This Corner Record was prepared by me or under my direction in conformance with  
the Professional Land Surveyor's Act on 6 MAY 2021

Signed [Signature] P.L.S. or R.C.E. No.: 8489



### COUNTY SURVEYOR'S STATEMENT

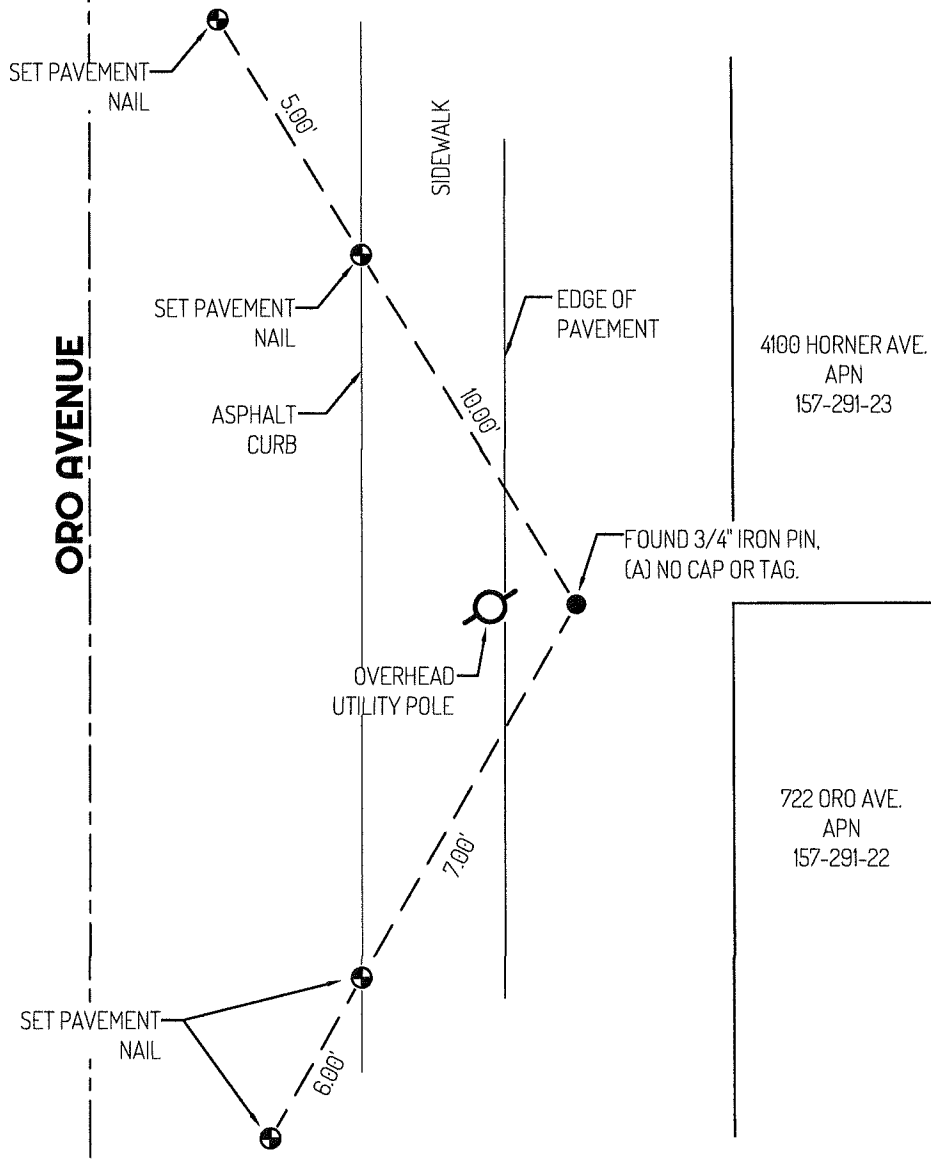
This Corner Record was received August 12, 2022  
and examined and filed September 1, 2022

Signed James E. Hart P.L.S. or R.C.E. No.: 8657

Title County Surveyor

County Surveyor's Comment





**LEGEND**

- FOUND 3/4" IRON PIN, PER (A)
- ⊕— SET CONTROL POINT
- 435 REFERENCE STREET ADDRESS
- APN ASSESSOR'S PARCEL NUMBER
- RS RECORD OF SURVEYS SAN JOAQUIN COUNTY RECORDS

**LINETYPES**

- - - CENTERLINE
- EDGE OF PAVEMENT
- PROPERTY LINE
- TIE LINE

**REFERENCE**

(A) RS 23-071

