

CORNER RECORD

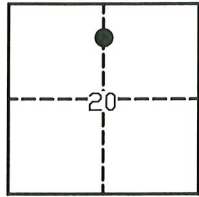
Agency Index: CR-22-260

Document Number: _____

City of STOCKTON

County of SAN JOAQUIN, California

Brief Legal Description MONUMENTS AT THE INTERSECTION OF NORTH CALIFORNIA STREET AND EAST LINDSAY STREET.



CAMPO DE LOS FRANCESES

CORNER TYPE

- Government Corner
- Meander
- Rancho
- Control
- Property
- Other

Date of Survey 8-31-2022

COORDINATES (Optional)

- N. _____ E. _____
- Elevation _____
- Units Metric U.S. Survey Foot
- Horizontal Datum _____
- Zone _____ Epoch Date _____
- Vertical Datum _____
- Complies with Public Resources Code §§8801-8819
- Complies with Public Resources Code §§8890-8902

PLS Act Ref: 8765(d) 8771 8773 Other:

Corner/Monument: Left as found Established Rebuilt Pre-Construction

Found and Tagged Reestablished Referenced Post-Construction

Narrative of corner identified and monument as found, set, reset, replaced, or removed:

See sheet #2 for description(s):

FOUND FOUR (4) NAILS WITH BRASS TAG STAMPED "L.S. 6953" AS SHOWN ON CORNER RECORD NO. 22-070, S.J.C.S.R. SET ONE (1) NAIL WITH BRASS TAG STAMPED "L.S. 6953" AT THE NORTHWEST CORNER OF THE INTERSECTION OF NORTH CALIFORNIA STREET AND EAST LINDSAY STREET, ALL AS SHOWN ON PAGE 2.

SURVEYOR'S STATEMENT

This Corner Record was prepared by me or under my direction in conformance with the Land Surveyors' Act on SEPTEMBER 15, 2022,



Signed [Signature] P.L.S. or R.C.E. Number 6953

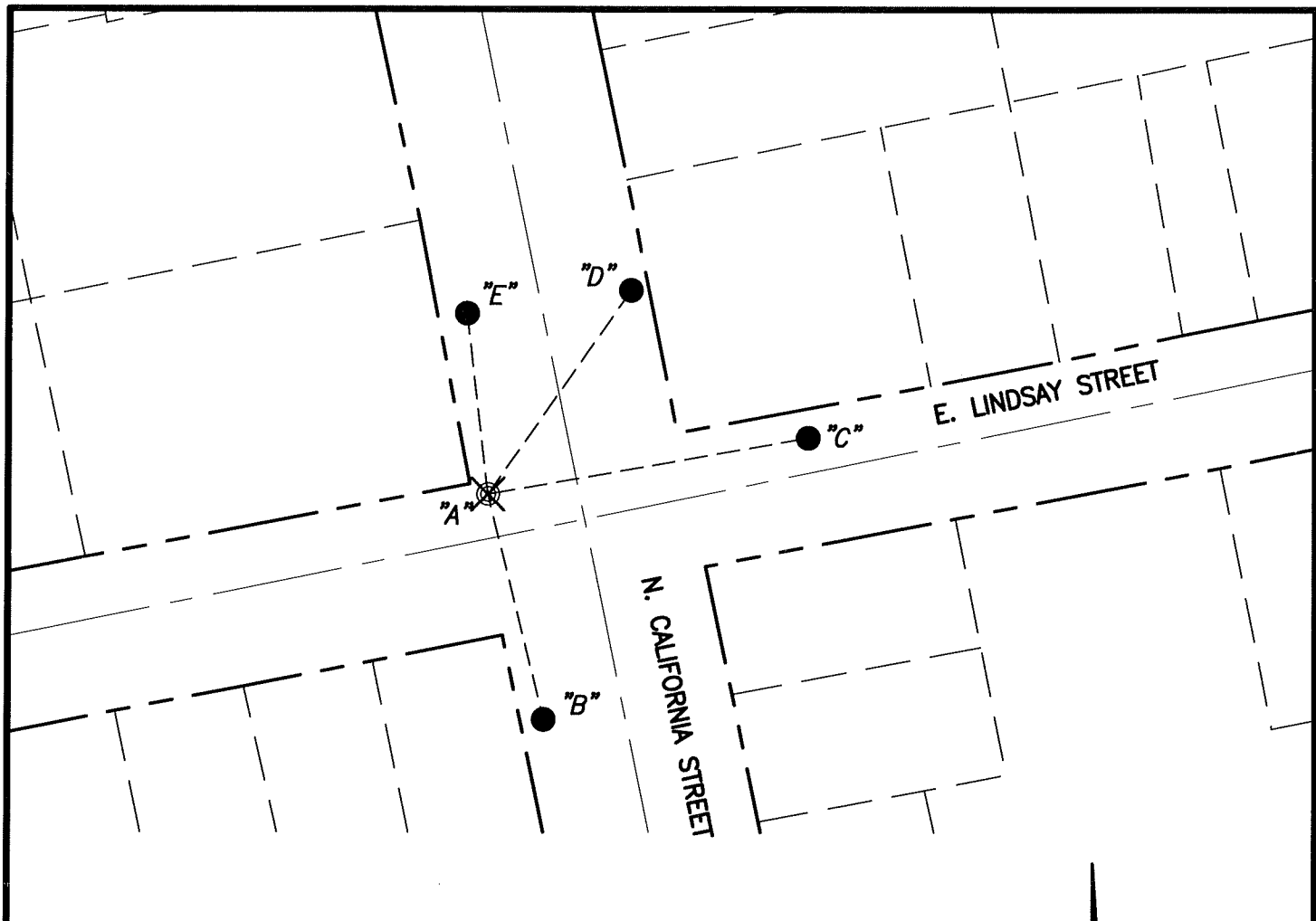
COUNTY SURVEYOR'S STATEMENT

This Corner Record was received October 18, 2022 and examined and filed October 27, 2022

Signed James E. Hart P.L.S. or R.C.E. No: 8657
Title County Surveyor



County Surveyor's Comment _____



| ∠ AND DISTANCE TABLE | | |
|----------------------|------------|----------------|
| BS-@-FS | ∠ | FS DISTANCE |
| B-A-B | 00°00'00" | 90.02'(M)(R1) |
| B-A-C | 280°32'50" | 125.15'(M)(R1) |
| B-A-D | 226°31'36" | 96.49'(M)(R1) |
| B-A-E | 195°05'50" | 73.82'(M)(R1) |



NOT TO SCALE

LEGEND:

- FOUND NAIL WITH BRASS TAG STAMPED "L.S. 6953" (R1)
- ⊗ SET NAIL WITH BRASS TAG STAMPED "L.S. 6953"
- S.J.C.S.R. SAN JOAQUIN COUNTY SURVEYOR'S RECORDS
- (M) MEASURED DISTANCE. ALL DISTANCES ARE MEASURED UNLESS NOTED OTHERWISE.
- C.R. CORNER RECORD

REFERENCE:

(R1) C.R.-22-070, S.J.C.S.R.