

# CORNER RECORD

Agency Index CR-22-258

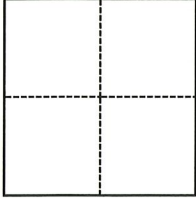
Document Number \_\_\_\_\_

City of Escalon County of San Joaquin, California

Brief Legal Description Northeast quarter (NE 1/4) Section 4, T.2S., R.9E., M.D.B. & M.

### CORNER TYPE

### COORDINATES (Optional)



- Government Corner
- Meander
- Rancho
- Control
- Property
- Other

N. \_\_\_\_\_ E. \_\_\_\_\_

Elevation \_\_\_\_\_

Units  Metric  U.S. Survey Foot

Horizontal Datum \_\_\_\_\_

Zone \_\_\_\_\_ Epoch Date \_\_\_\_\_

Vertical Datum \_\_\_\_\_

Complies with Public Resources Code §§8801-8819

Complies with Public Resources Code §§8890-8902

Date of Survey September 6, 2022

PLS Act Ref.:  8765(d)  8771  8773  Other:

Corner/Monument:  Left as found  Established  Rebuilt  Pre-Construction

Found and tagged  Reestablished  Referenced  Post-Construction

Narrative of corner identified and monument as found, set, reset, replaced, or removed:

See sheet #2 for description(s):

### SURVEYOR'S STATEMENT

This Corner Record was prepared by me or under my direction in conformance with

the Professional Land Surveyors' Act on September 30, 2022

Signed Douglas F. Banks P.L.S. or R.C.E. No. 8159



### COUNTY SURVEYOR'S STATEMENT

This Corner Record was received October 5, 2022

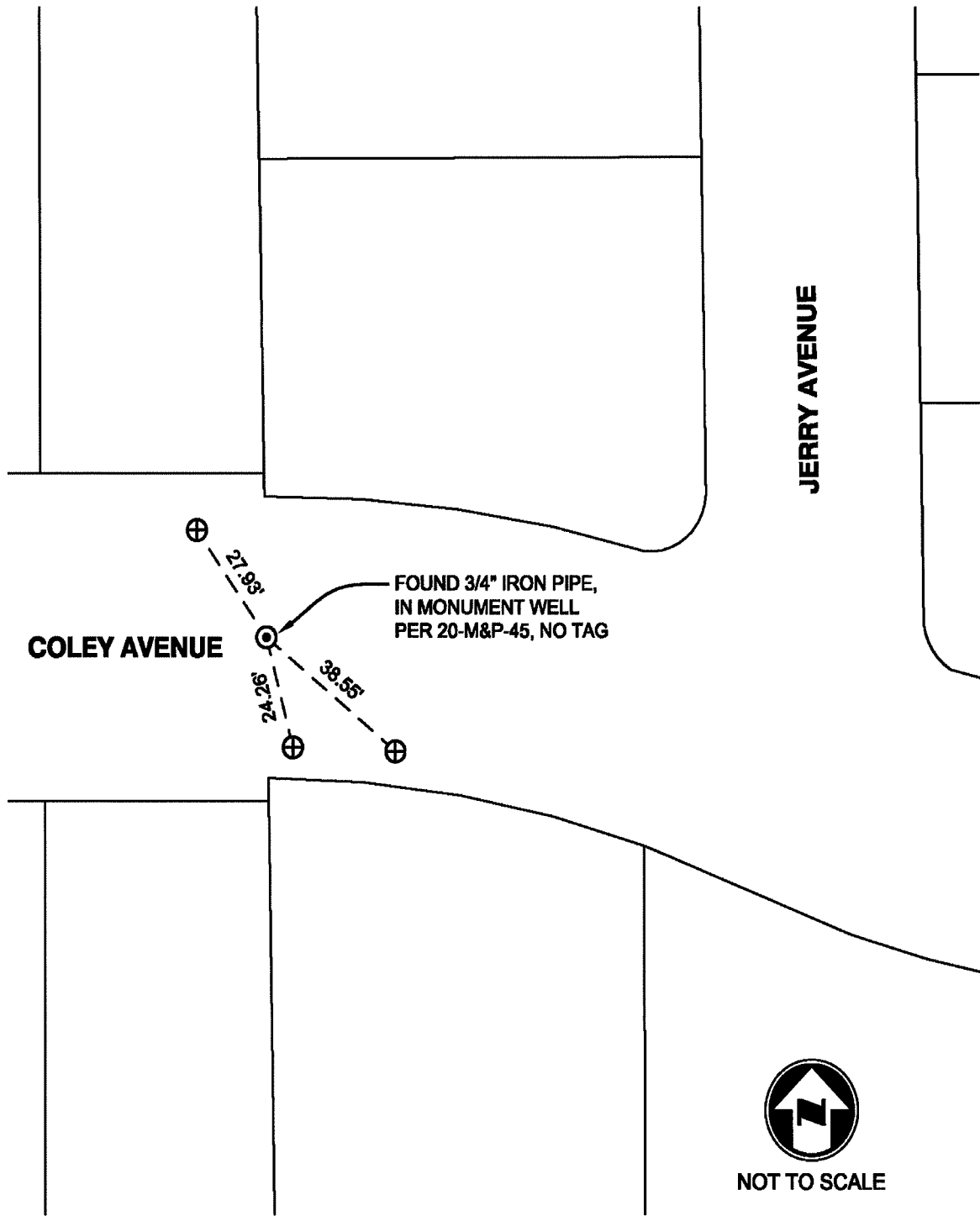
and examined and filed October 14, 2022

Signed James E. Hart P.L.S. or R.C.E. No. 8657

Title County Surveyor

County Surveyor's Comment





NOT TO SCALE

**NOTES:**

- ⊙ FOUND MONUMENT AS NOTED.
- ⊕ SET SAW CUT "⊕" IN CONCRETE ON EDGE OF WALK, UNLESS OTHERWISE NOTED.
- M&P- BOOK, PAGE, MAPS AND PLATS, SAN JOAQUIN COUNTY RECORDS