

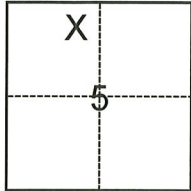
CORNER RECORD

Agency Index CR-22-256
 Document Number _____

City of _____ County of San Joaquin, California
 Brief Legal Description 2.066 Acre Parcel, per R.S. 13-81, S.J.C.R.

CORNER TYPE

COORDINATES (Optional)



- Government Corner Control
 Meander Property
 Rancho Other

Date of Survey September 1, 2022

N. _____ E. _____

Elevation _____

Units Metric U.S. Survey Foot

Horizontal Datum _____

Zone _____ Epoch Date _____

Vertical Datum _____

Complies with Public Resources Code §§8801-8819

Complies with Public Resources Code §§8890-8902

T.2N., R.7E., M.D.B.&M.

- PLS Act Ref.: 8765(d) 8771 8773 Other:
 Corner/Monument: Left as found Established Rebuilt Pre-Construction
 Found and tagged Reestablished Referenced Post-Construction

Narrative of corner identified and monument as found, set, reset, replaced, or removed:

See sheet #2 for description(s):

SURVEYOR'S STATEMENT

This Corner Record was prepared by me or under my direction in conformance with
 the Professional Land Surveyors' Act on 9/22/22
 Signed [Signature] P.L.S. or R.C.E. No. 25835

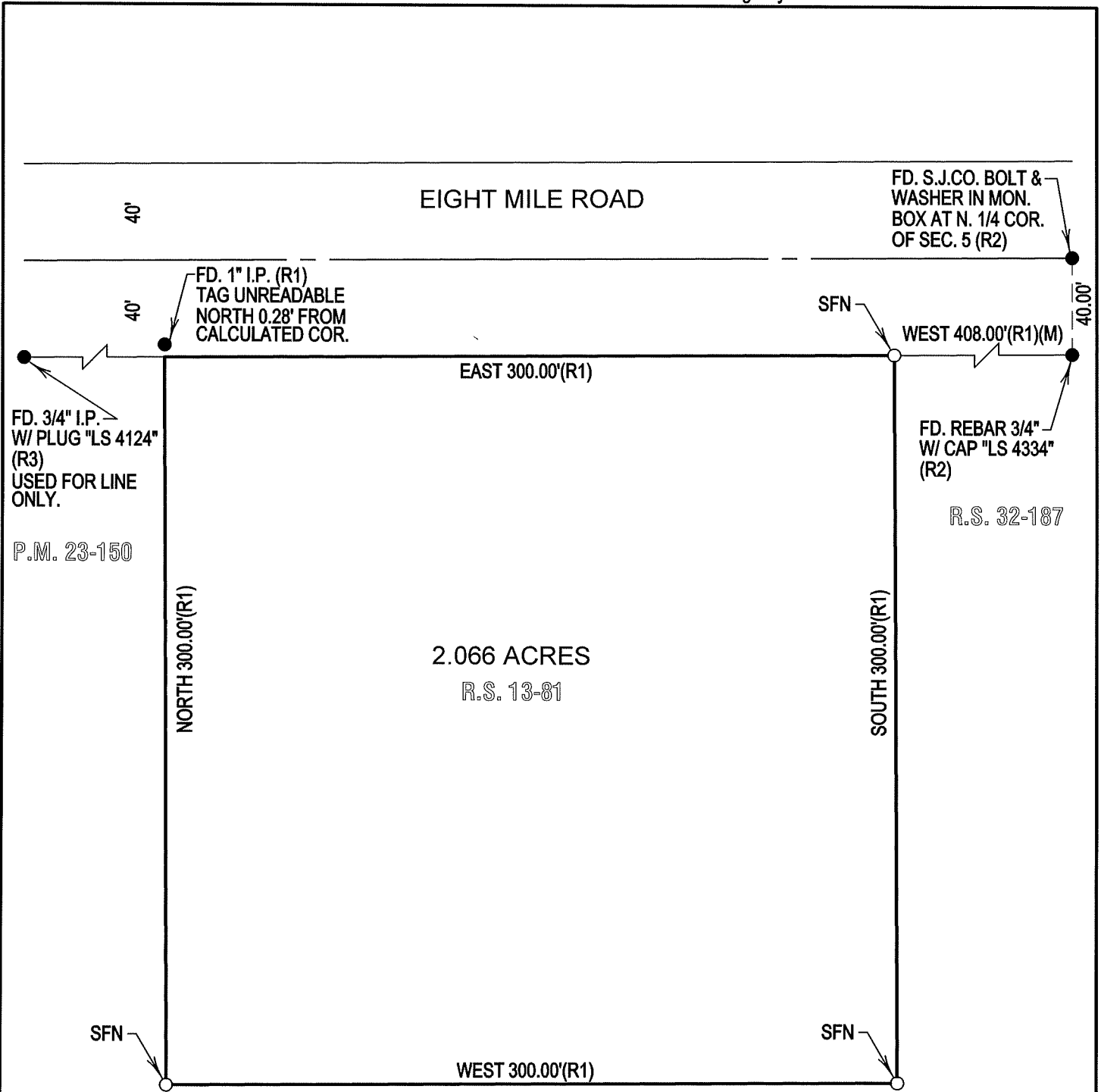


COUNTY SURVEYOR'S STATEMENT

This Corner Record was received October 3, 2022
 and examined and filed October 10, 2022
 Signed James E Hart P.L.S. or R.C.E. No. 8657
 Title County Surveyor



County Surveyor's Comment



LEGEND

FD.	FOUND	MON.	MONUMENT
R.S.	RECORD OF SURVEY	N.	NORTH
(M)	MEASURED	COR.	CORNER
P.M.	PARCEL MAP	SEC.	SECTION
S.J.C.R.	SAN JOAQUIN COUNTY RECORDS	I.P.	IRON PIPE

REFERENCES

(R1)	R.S. 13-81, S.J.C.R.
(R2)	R.S. 32-187, S.J.C.R.
(R3)	P.M. 23-150, S.J.C.R.

SFN	SEARCHED FOUND NOTHING
S.J.CO.	SAN JOAQUIN COUNTY
—○—	SET 3/4" X 30" IRON ROD CAPPED "RCE 25835" OR AS NOTED.
—●—	FOUND MONUMENT AS NOTED