

CORNER RECORD

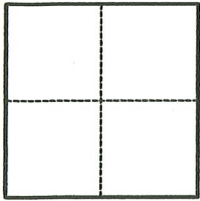
Agency Index CR-22-255

Document Number _____

City of _____

County of SAN JOAQUIN, California

Brief Legal Description A PORTION OF THE N.1/2 SECTION 10 T.2S.R4E. M.D.B.M AS SHOWN ON 30 R.S. 78, S.J.C.R.



CORNER TYPE

- Government Corner
- Meander
- Rancho
- Control
- Property
- Other

Date of Survey 4/4/2022

COORDINATES (Optional)

N. _____ E. _____

Elevation _____
Units Metric U.S. Survey Foot

Horizontal Datum _____

Zone _____ Epoch Date _____

Vertical Datum _____

- Complies with Public Resources Code §§8801-8819
- Complies with Public Resources Code §§8890-8902

PLS Act Ref: 8765(d) 8771 8773 Other:

Corner/Monument: Left as found Established Rebuilt Pre-Construction
 Found and tagged Reestablished Referenced Post-Construction

Narrative of corner identified and monument as found, set, reset, replaced, or removed:

See sheet #2 for description (s):

SET SOUTHWEST CORNER OF THE 40.3 AC PARCEL OF LAND AS SHOWN ON 30 R.S. 78 HOLDING A FOUND REBAR LOCATED AT THE SOUTH EAST CORNER OF THE 3.00 AC PARCEL OF LAND SHOWN ON SAID RECORD MAP HAVING A RECORD DISTANCE OF 968.46' AND HOLDING RECORD BEARING OF S51°51'57"E TO A REBAR LOCATED AT THE SOUTHEAST CORNER OF THE 10AC PARCEL OF LAND SHOWN ON SAID RECORD MAP HAVING A RECORD DISTANCE OF 1370.92', PRORATING THE DISTANCE BETWEEN FOUND MONUMENTS. AS SHOWN ON PAGE 2

SURVEYOR'S STATEMENT

This Corner Record was prepared by me or under my direction in conformance with the Professional Land Surveyors' Act on 4/15/2022

Signed [Signature] P.L.S. or R.C.E. No. LS 9384



COUNTY SURVEYOR'S STATEMENT

This Corner Record was received September 28, 2022

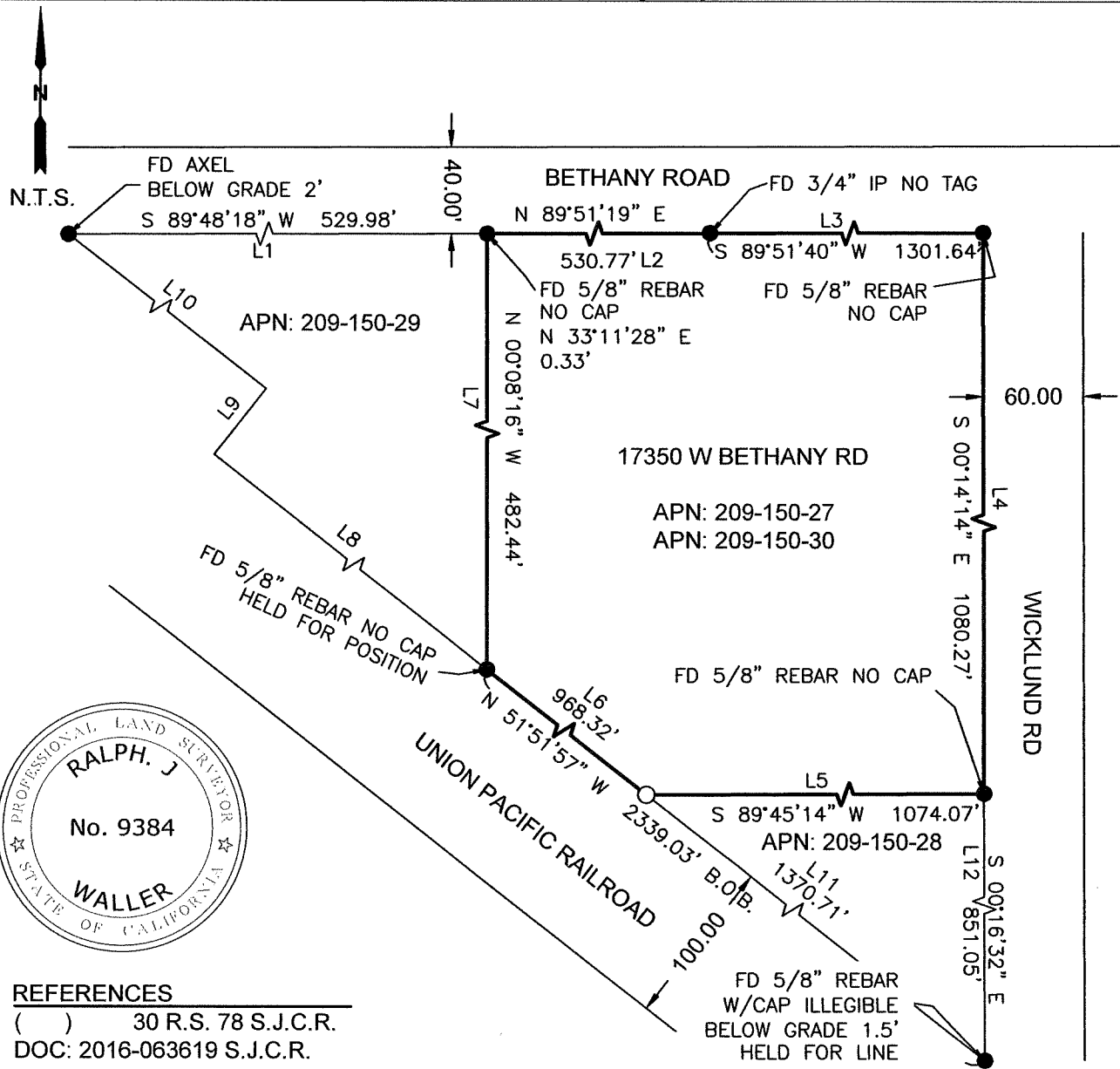
and examined and filed October 4, 2022

Signed James E. Hart P.L.S. or R.C.E. No. 8657

Title County Surveyor



County Surveyor's Comment _____



REFERENCES
 () 30 R.S. 78 S.J.C.R.
 DOC: 2016-063619 S.J.C.R.

LEGEND

- These standard symbols will be found in the drawing.
- SET 3/4" X 18" IP W/CAP LS9384 ○
 - BOUNDARY LINE ———
 - FOUND MONUMENT AS NOTED ●
 - NOT TO SCALE N.T.S.
 - ASSESSOR'S PARCEL NUMBER APN
 - FOUND FD
 - BASIS OF BEARINGS B.O.B.
 - RECORD OF SURVEY R.S.
 - SAN JOAQUIN COUNTY RECORDS S.J.C.R.

RECORD BEARINGS AND DISTANCES PER 30 R.S. 78

LINE	BEARING	DISTANCE
L1	(S 89°50'26" W)	529.98'
L2	(S 89°50'26" W)	531.20'
L3	(S 89°50'58" W)	1301.79'
L4	(N 00°15'00" W)	1080.40'
L5	(S 89°44'59" W)	1074.61'
L6	(S 51°51'57" E)	968.46'
L7	(N 00°09'34" W)	482.16'
L8	(N 51°51'57" W)	415.64'
L9	(N 38°08'03" E)	50.00'
L10	(S 51°51'57" E)	299.10'
L11	(N 51°51'57" W)	1370.92'
L12	(S 00°15'00" E)	851.25'

DISTANCES ARE IN FEET AND DECIMAL THERE OF.