

CORNER RECORD

Agency Index CR-22-254

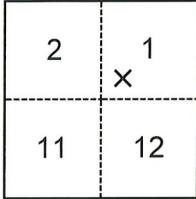
Document Number _____

City of Lodi County of San Joaquin, California

Brief Legal Description Property monument at NE corner of Oak St. and Pleasant Ave. (M&P 2-12)

CORNER TYPE

COORDINATES (Optional)



- Government Corner Control
 Meander Property
 Rancho Other

N. _____ E. _____

Elevation _____

Units Metric U.S. Survey Foot

Horizontal Datum _____

Zone _____ Epoch Date _____

Vertical Datum _____

Complies with Public Resources Code §§8801-8819

Complies with Public Resources Code §§8890-8902

Section 1, T.3N.,R.6E.
M.D.B.&M.

Date of Survey July 14, 2022

PLS Act Ref.: 8765(d) 8771 8773 Other:

Corner/Monument: Left as found Established Rebuilt Pre-Construction

Found and tagged Reestablished Referenced Post-Construction

Narrative of corner identified and monument as found, set, reset, replaced, or removed:

See sheet #2 for description(s):

USING THREE (3) NAIL AND WASHERS (CR 21-239), RESET MONUMENT DESTROYED BY CONSTRUCTION WITH ONE 3/4" IRON ROD CAPPED "CITY OF LODI PLS #9478" AT APPROXIMATE LOT LINE PROJECTIONS PER M.&P. 2-12. NO BOUNDARY ANALYSIS WAS PERFORMED.

SURVEYOR'S STATEMENT

This Corner Record was prepared by me or under my direction in conformance with

the Professional Land Surveyors' Act on 9/14/22

Signed [Signature] P.L.S. or R.C.E. No. 9478



COUNTY SURVEYOR'S STATEMENT

This Corner Record was received September 24, 2022

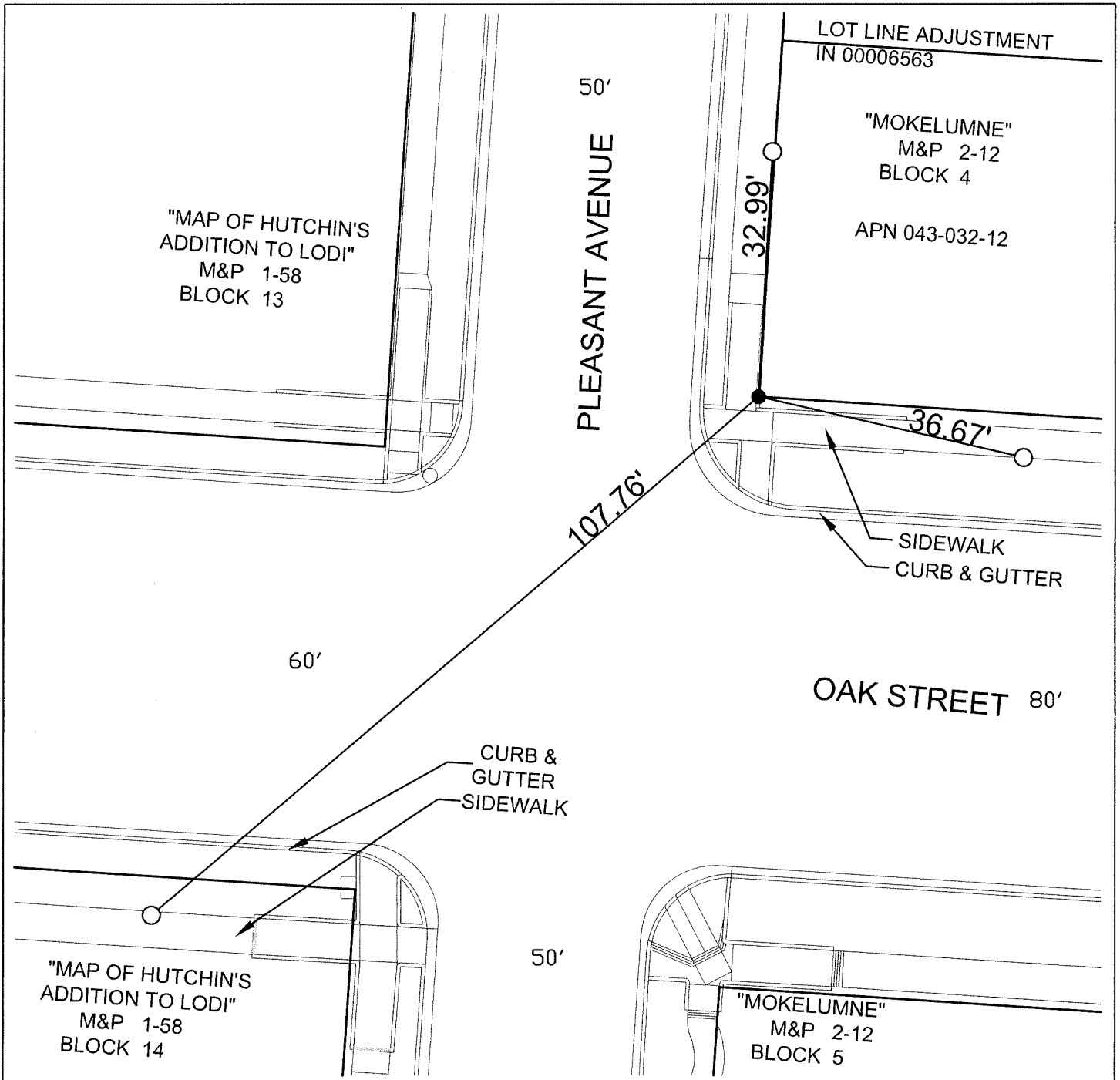
and examined and filed October 3, 2022

Signed James E. Hart P.L.S. or R.C.E. No. 8657

Title County Surveyor

County Surveyor's Comment





LEGEND

● SET 3/4" X 36" IRON ROD CAPPED
"CITY OF LODI PLS #9478"

○ FOUND NAIL AND WASHER
STAMPED "C. O. L. LS 9478"
PER CR 21-239

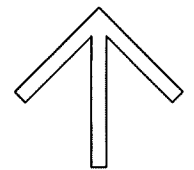
FD FOUND ON THIS SURVEY

M&P MAPS & PLATS, VOLUME AND
PAGE, SAN JOAQUIN COUNTY
RECORDS

(M) MEASURED ON THIS SURVEY

IN INSTRUMENT NUMBER, SAN
JOAQUIN COUNTY RECORDS

CR CORNER RECORD, SAN JOAQUIN
COUNTY SURVEYOR'S RECORDS



NORTH
SCALE: 1"=20'
021A007.DWG