

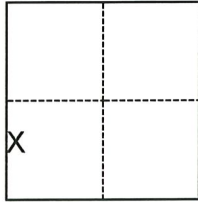
CORNER RECORD

Agency Index CR-22-253
Document Number _____

City of Lodi County of San Joaquin, California
Brief Legal Description Centerline monuments at Mills Avenue (M&P 18-8)

CORNER TYPE

COORDINATES (Optional)



- Government Corner
- Meander
- Rancho
- Control
- Property
- Other

Date of Survey June 16, 2022

N. _____ E. _____
 Elevation _____
 Units Metric U.S. Survey Foot
 Horizontal Datum _____
 Zone _____ Epoch Date _____
 Vertical Datum _____
 Complies with Public Resources Code §§8801-8819
 Complies with Public Resources Code §§8890-8902

Section 11, T.3N., R.6E.
M.D.B.&M.

- PLS Act Ref.: 8765(d) 8771 8773 Other:
- Corner/Monument: Left as found Established Rebuilt Pre-Construction
 Found and tagged Reestablished Referenced Post-Construction

Narrative of corner identified and monument as found, set, reset, replaced, or removed:

See sheet #2 for description(s):

FOUND TWO (2) 3/4" IRON ROD CENTERLINE MONUMENTS AT MILLS AVENUE STAMPED "LS 2273" PER M&P 18-8. SET MONUMENT BOXES AT BOTH LOCATIONS. VERIFIED TIES TO CONFIRM EXISTING MONUMENTS WERE UNDISTURBED AND LEFT AS FOUND. NO BOUNDARY ANALYSIS WAS PERFORMED.

SURVEYOR'S STATEMENT

This Corner Record was prepared by me or under my direction in conformance with
 the Professional Land Surveyors' Act on 9/14/22
 Signed [Signature] P.L.S. or R.C.E. No. 9478

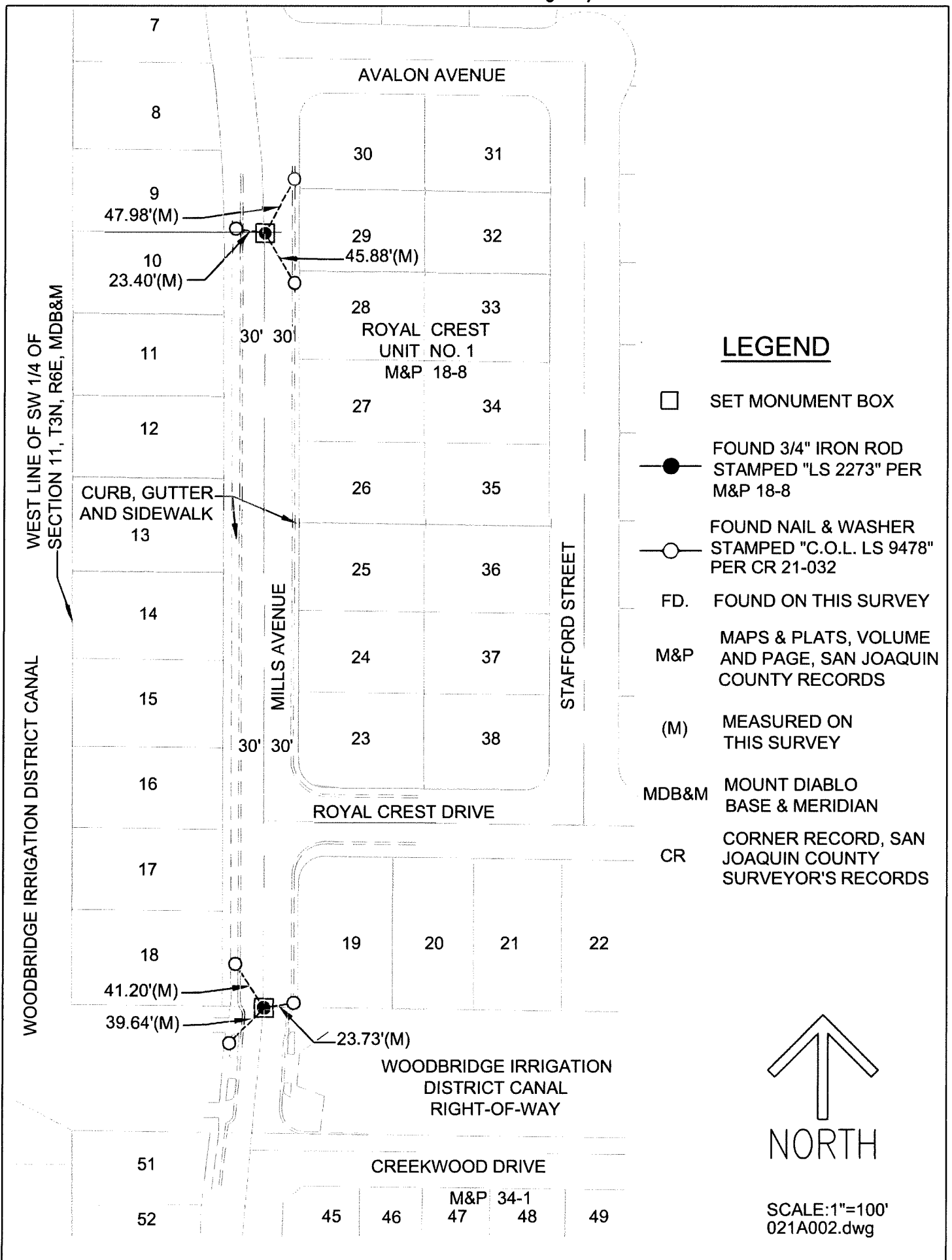


COUNTY SURVEYOR'S STATEMENT




This Corner Record was received September 24, 2022
 and examined and filed October 3, 2022
 Signed James E. Hart P.L.S. or R.C.E. No. 8657
 Title County Surveyor

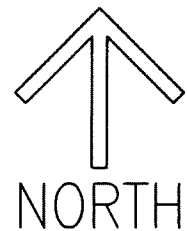


County Surveyor's Comment



LEGEND

-  SET MONUMENT BOX
-  FOUND 3/4" IRON ROD STAMPED "LS 2273" PER M&P 18-8
-  FOUND NAIL & WASHER STAMPED "C.O.L. LS 9478" PER CR 21-032
- FD. FOUND ON THIS SURVEY
- M&P MAPS & PLATS, VOLUME AND PAGE, SAN JOAQUIN COUNTY RECORDS
- (M) MEASURED ON THIS SURVEY
- MDB&M MOUNT DIABLO BASE & MERIDIAN
- CR CORNER RECORD, SAN JOAQUIN COUNTY SURVEYOR'S RECORDS



SCALE: 1"=100'
021A002.dwg