

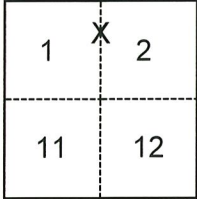
# CORNER RECORD

Agency Index CR-22-249  
Document Number \_\_\_\_\_

City of Lodi County of San Joaquin, California  
Brief Legal Description Property monuments at Forrest Ave./West of Lincoln St. (M&P 1-38, RS 5-71)

### CORNER TYPE

### COORDINATES (Optional)



- Government Corner     Control  
 Meander                 Property  
 Rancho                     Other

N. \_\_\_\_\_ E. \_\_\_\_\_  
 Elevation \_\_\_\_\_  
 Units     Metric             U.S. Survey Foot  
 Horizontal Datum \_\_\_\_\_  
 Zone \_\_\_\_\_ Epoch Date \_\_\_\_\_  
 Vertical Datum \_\_\_\_\_

Date of Survey July 6, 2022

Sections 1&2, T.3N.,R.6E.  
M.D.B.&M.

- Complies with Public Resources Code §§8801-8819  
 Complies with Public Resources Code §§8890-8902

- PLS Act Ref.:     8765(d)             8771             8773             Other:  
 Corner/  
 Monument:     Left as found             Established             Rebuilt             Pre-Construction  
                        Found and tagged             Reestablished             Referenced             Post-Construction

Narrative of corner identified and monument as found, set, reset, replaced, or removed:

See sheet #2 for description(s):

FOUND UNREFERENCED 3/4" IRON PIN AT APPROXIMATE LOT LINE PROJECTION PER M.&P. 1-38. CHISELED CROSS WHICH DID NOT APPEAR TO BE A SURVEY MONUMENT WAS DESTROYED AND NOT RESET, BUT ITS TIES ARE SHOWN FOR REFERENCE. NO BOUNDARY ANALYSIS WAS PERFORMED.

### SURVEYOR'S STATEMENT

This Corner Record was prepared by me or under my direction in conformance with  
 the Professional Land Surveyors' Act on 9/14/22  
 Signed [Signature] P.L.S. or R.C.E. No. 9478

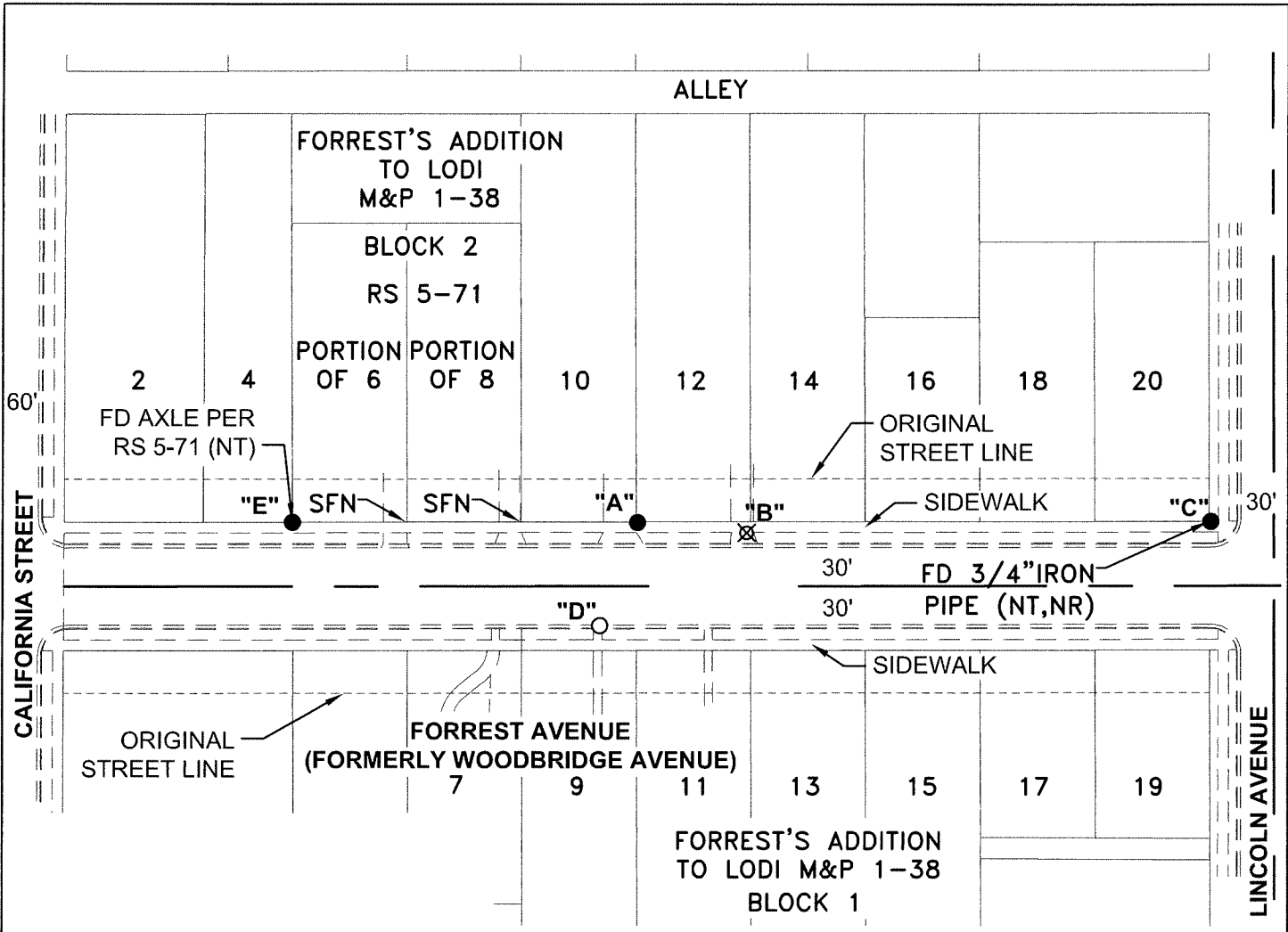


### COUNTY SURVEYOR'S STATEMENT

This Corner Record was received September 24, 2022  
 and examined and filed October 3, 2022  
 Signed James E. Hart P.L.S. or R.C.E. No. 8657  
 Title County Surveyor



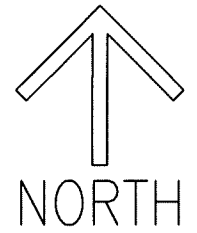
County Surveyor's Comment



DISTANCE (M) TABLE							
FD MONUMENT		FROM	DISTANCE	FROM	DISTANCE	FROM	DISTANCE
"A"	3/4" IRON PIN (NT,NR)	"C"	267.84'	"D"	51.21'	"E"	161.15'
"B"	CHISELED CROSS (NT,NR)	"C"	216.72'	"D"	81.24'	"E"	212.39'

**LEGEND**

- FOUND MONUMENT AS NOTED
- FOUND NAIL AND WASHER STAMPED "C.O.L. LS 9478" PER CR 22-147
- FD FOUND ON THIS SURVEY
- SFN SEARCHED, FOUND NOTHING
- CR CORNER RECORD, SAN JOAQUIN COUNTY SURVEYOR'S RECORDS
- ⊗ CHISELED CROSS PER CR 22-147, DESTROYED AND NOT RESET
- M&P MAPS & PLATS, VOLUME AND PAGE, SAN JOAQUIN COUNTY RECORDS
- RS RECORD OF SURVEY, BOOK AND PAGE, SAN JOAQUIN COUNTY RECORDS
- (M) MEASURED ON THIS SURVEY
- (NT,NR) NO TAG AND/OR NO RECORD, AS NOTED



SCALE: 1"=80'  
021A005.DWG