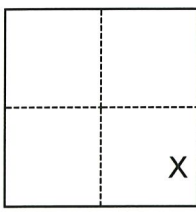


CORNER RECORD

Agency Index CR-22-246
Document Number _____

City of Lodi County of San Joaquin, California
Brief Legal Description Property monuments at alley north of Pine St (Garfield St. - Cherokee Ln.)



- CORNER TYPE**
- Government Corner Control
 Meander Property
 Rancho Other

Date of Survey June 10, 2022

- COORDINATES (Optional)**
- N. _____ E. _____
Elevation _____
Units Metric U.S. Survey Foot
Horizontal Datum NAD83
Zone III Epoch Date 2007.00
Vertical Datum NAVD88
 Complies with Public Resources Code §§8801-8819
 Complies with Public Resources Code §§8890-8902

Section 1, T.3N.,R.6E.
M.D.B.&M.

- PLS Act Ref.: 8765(d) 8771 8773 Other:
- Corner/Monument: Left as found Established Rebuilt Pre-Construction
 Found and tagged Reestablished Referenced Post-Construction

Narrative of corner identified and monument as found, set, reset, replaced, or removed:
 See sheet #2 for description(s):

USED TOTAL STATION SET UP ON CONTROL POINTS (CR 21-249) TO ESTABLISH LOCATION OF FIVE (5) FOUND MONUMENTS ON LOT LINE PROJECTIONS (CHW GG-037, M&P 10-34 AND RS 28-75). NINE (9) MONUMENTS OF NO RECORD (CR 21-249) DO NOT APPEAR TO CONTROL VERTICAL OR HORIZONTAL SURVEYS, WERE DESTROYED AND NOT RESET. NO BOUNDARY ANALYSIS WAS PERFORMED.

SURVEYOR'S STATEMENT

This Corner Record was prepared by me or under my direction in conformance with the Professional Land Surveyors' Act on 9/14/22.
Signed [Signature] P.L.S. or R.C.E. No. 9478

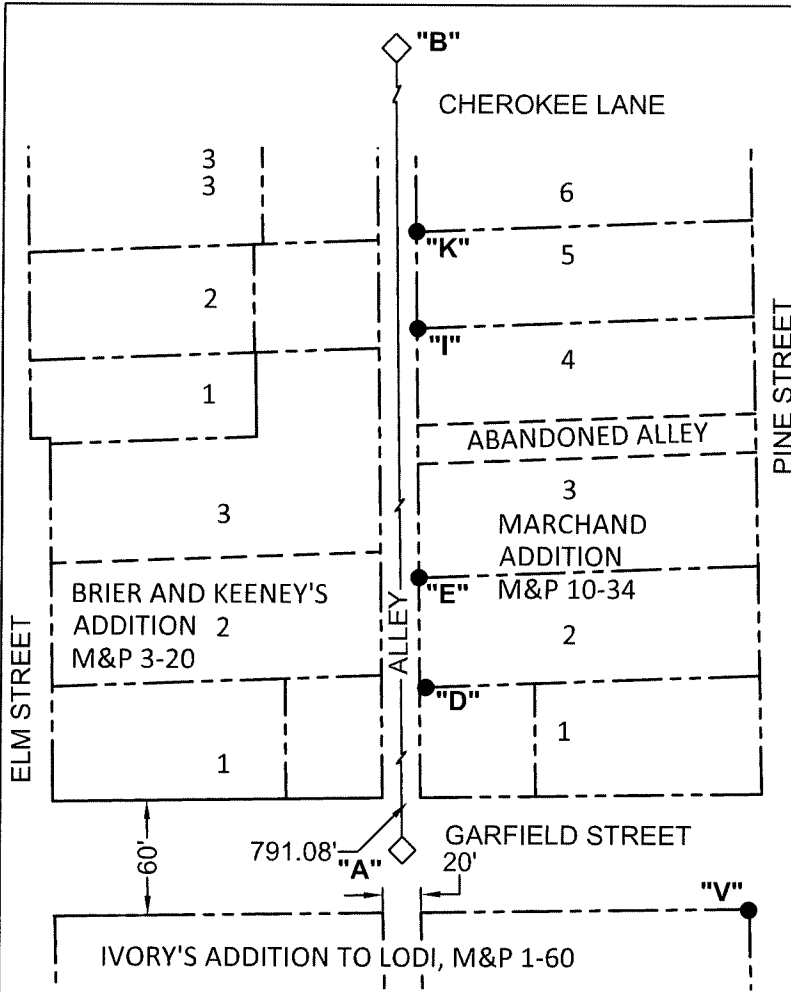


COUNTY SURVEYOR'S STATEMENT

This Corner Record was received September 24, 2022 and examined and filed October 3, 2022.
Signed James E. Hart P.L.S. or R.C.E. No. 8657
Title County Surveyor



County Surveyor's Comment



LEGEND

- ◇ FOUND CONTROL POINT PER CR 21-249
- FOUND MONUMENT AS NOTED
- RS RECORD OF SURVEY, BOOK & PAGE, SAN JOAQUIN COUNTY RECORDS
- M&P MAPS & PLATS, VOLUME AND PAGE, SAN JOAQUIN COUNTY RECORDS
- (M) MEASURED ON THIS SURVEY
- CHW UNRECORDED MAP OF SURVEY BY CH WIDDOWS, FILE NUMBER, COUNTY SURVEYOR'S OFFICE
- CR CORNER RECORD, SAN JOAQUIN COUNTY SURVEYOR'S RECORDS

STATEMENT OF PURPOSE:

THE PURPOSE OF THIS SURVEY IS TO IDENTIFY AND RECORD THE LOCATION OF EXISTING MONUMENTS AFTER THE CONSTRUCTION OF AN ALLEY CAPITAL IMPROVEMENT PROJECT. NO BOUNDARY ANALYSIS WAS PERFORMED.

DATUM STATEMENT:

COORDINATES FOR CONTROL POINTS A & B WERE LOCATED USING G.P.S. AFTER A SYSTEM ADJUSTMENT TO 9 CITY OF LODI MONUMENTS (H1090, I2429, M1890, P1090, P2699, T1890, X1090, X1390 AND X2650) AS SHOWN ON RECORD OF SURVEY BOOK 37 OF SURVEYS, PAGE 50 BASED ON THE CALIFORNIA COORDINATE SYSTEM (CCS83), ZONE III, 1983 NAD, EPOCH DATE 2007.00. THE PROJECT SPECIFIC COMBINED SCALE FACTOR IS 0.99995382. COORDINATES SHOWN ON THIS SHEET.

POINT	NORTHING	EASTING	DESCRIPTION
A	2236478.938	6342074.369	CONTROL POINT, MAG NAIL
B	2236489.753	6342865.317	CONTROL POINT, SPIKE
D	2236467.187	6342159.142	1" IROD, M&P 10-34
E	2236471.078	6342216.228	1" IROD, M&P 10-34
I	2236472.520	6342345.144	3/4" PIPE, CHW GG-37
K	2236473.248	6342395.412	1/2" REBAR, M&P 10-34
V	2236298.384	6342043.599	1" IRON PIPE PER CR 21-249, CALLED 1" IRON ROD ON RS 28-75

NOTES

1. PK NAILS AND SPIKES DO NOT APPEAR TO CONTROL VERTICAL OR HORIZONTAL SURVEYS.
2. PK NAILS AND SPIKES WERE DESTROYED BY CONSTRUCTION AND NOT REBUILT.
3. COORDINATES ARE GRID

NOTE:

FIELD EFFORT INCLUDED A SEARCH ALONG THE ALLEY AT EACH PROPERTY CORNER. ONLY THOSE FOUND ARE SHOWN.

SCALE: 1"=100'
020D004.DWG