

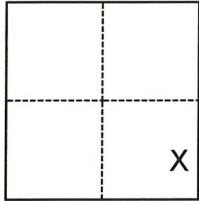
CORNER RECORD

Agency Index CR-22-245
 Document Number _____

City of Lodi County of San Joaquin, California
 Brief Legal Description Property monuments at alley north of Pine St (Garfield St. - Cherokee Ln.)

CORNER TYPE

COORDINATES (Optional)



- Government Corner
- Meander
- Rancho
- Control
- Property
- Other

N. _____ E. _____
 Elevation _____
 Units Metric U.S. Survey Foot
 Horizontal Datum NAD83
 Zone III Epoch Date 2007.00
 Vertical Datum NAVD88
 Complies with Public Resources Code §§8801-8819
 Complies with Public Resources Code §§8890-8902

Date of Survey June 10, 2022

Section 1, T.3N., R.6E.
 M.D.B.&M.

- PLS Act Ref.: 8765(d) 8771 8773 Other: _____
- Corner/Monument: Left as found Established Rebuilt Pre-Construction
 Found and tagged Reestablished Referenced Post-Construction

Narrative of corner identified and monument as found, set, reset, replaced, or removed:

See sheet #2 for description(s):

USED TOTAL STATION, TO VERIFY LOCATIONS AND/OR RESET, SIX (6) FOUND MONUMENTS FROM CR 21-240. TWO ADDITIONAL MONUMENTS WHICH WERE DESTROYED, WERE NOT RESET AS THEY DID NOT APPEAR TO CONTROL VERTICAL OR HORIZONTAL SURVEYS. MONUMENTS R & P WERE DESTROYED AND NOT RESET FOR REASONS NOTED. MONUMENTS U & S WERE FOUND UNDISTURBED. MONUMENT "Q" WAS DESTROYED BY CONSTRUCTION AND RESET IN ITS ORIGINAL LOCATION AS A 3/4" IRON ROD WITH CAP STAMPED "CITY OF LODI PLS #9478". MONUMENT "T" WAS DESTROYED BY CONSTRUCTION AND RESET IN ITS ORIGINAL LOCATION AS A NAIL AND WASHER STAMPED "C.O.L. LS 9478". NO BOUNDARY ANALYSIS WAS PERFORMED.

SURVEYOR'S STATEMENT

This Corner Record was prepared by me or under my direction in conformance with the Professional Land Surveyors' Act on 9/14/22
 Signed [Signature] P.L.S. or R.C.E. No. 9478



COUNTY SURVEYOR'S STATEMENT

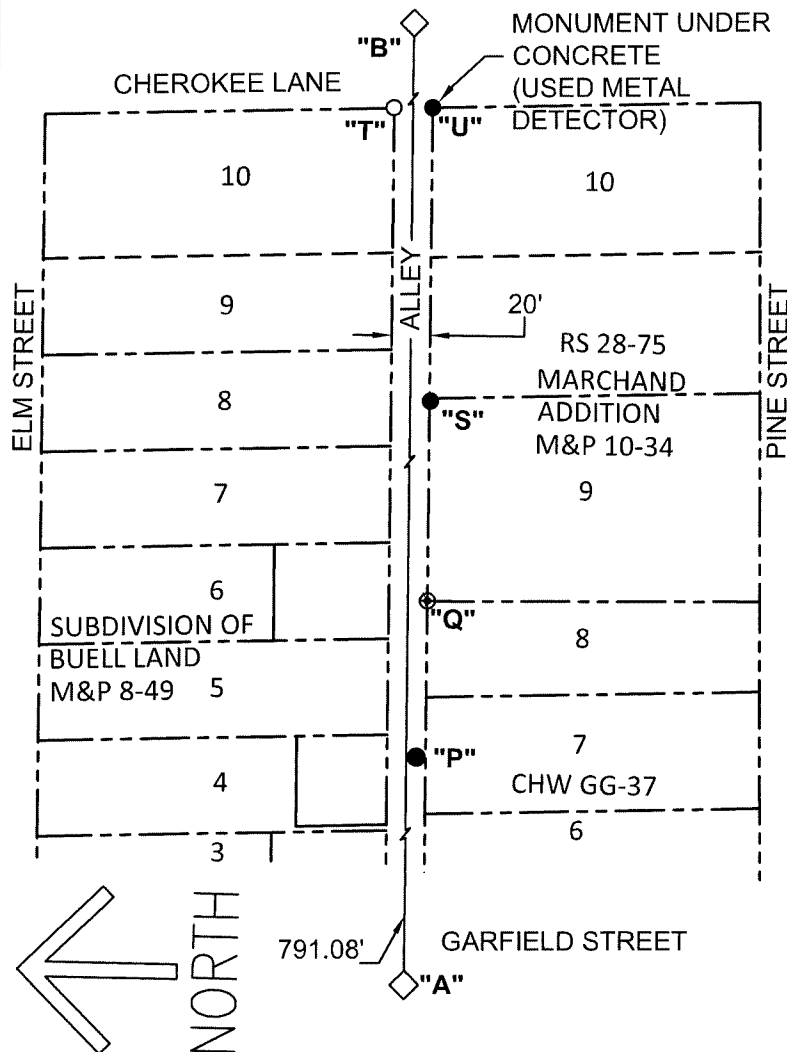
This Corner Record was received September 24, 2022
 and examined and filed October 3, 2022
 Signed James E. Hart P.L.S. or R.C.E. No. 8657
 Title County Surveyor



County Surveyor's Comment

LEGEND

- ⊙ SET/RESET MONUMENT AS NOTED
- SET NAIL AND WASHER STAMPED "C.O.L LS 9478"
- FOUND MONUMENT AS NOTED
- ◇ FOUND CONTROL POINT PER CR 21-240
- RS RECORD OF SURVEY, BOOK & PAGE, SAN JOAQUIN COUNTY RECORDS
- M&P MAPS & PLATS, VOLUME AND PAGE, SAN JOAQUIN COUNTY RECORDS
- (M) MEASURED ON THIS SURVEY
- CHW UNRECORDED MAP OF SURVEY BY CH WIDDOWS, FILE NUMBER, COUNTY SURVEYOR'S OFFICE
- CR CORNER RECORD, SAN JOAQUIN COUNTY SURVEYOR'S RECORDS



STATEMENT OF PURPOSE:

THE PURPOSE OF THIS SURVEY IS TO IDENTIFY AND RECORD THE LOCATION OF EXISTING MONUMENTS AFTER CONSTRUCTION OF AN ALLEY CAPITAL IMPROVEMENT PROJECT. NO BOUNDARY ANALYSIS WAS PERFORMED.

DATUM STATEMENT:

COORDINATES FOR CONTROL POINTS A & B WERE LOCATED USING G.P.S. AFTER A SYSTEM ADJUSTMENT TO 9 CITY OF LODI MONUMENTS (H1090, I2429, M1890, P1090, P2699, T1890, X1090, X1390 AND X2650) AS SHOWN ON RECORD OF SURVEY BOOK 37 OF SURVEYS, PAGE 50 BASED ON THE CALIFORNIA COORDINATE SYSTEM (CCS83), ZONE III, 1983 NAD, EPOCH DATE 2007.00. THE PROJECT SPECIFIC COMBINED SCALE FACTOR IS 0.99995382. COORDINATES SHOWN ON THIS SHEET.

NOTE:

FIELD EFFORT INCLUDED A SEARCH ALONG THE ALLEY AT EACH PROPERTY CORNER. ONLY THOSE FOUND ARE SHOWN.

POINT	NORTHING	EASTING	DESCRIPTION
Q	2236475.638	6342565.984	3/4" X 36" IROD W/ CAP STAMPED "CITY OF LODI PLS 9478"
S	2236476.619	6342669.641	1/2" IROD BENT, RS 28-75
T	2236499.109	6342821.061	NAIL AND WASHER STAMPED "C.O.L LS 9478"
U	2236479.079	6342821.626	5/8" IROD, M&P 10-34

NOTES

1. NOT SHOWN ON THIS CORNER RECORD WHICH WERE REFERENCED IN CR 21-240.
 - A) A PK NAIL OF NO RECORD WHICH DID NOT APPEAR TO CONTROL VERTICAL OR HORIZONTAL SURVEYS.
 - B) A SPIKE WHICH WAS NOT RESET TO AVOID DOUBLE MONUMENTATION
2. COORDINATES ARE GRID

SCALE: 1"=100'
020D004.DWG