

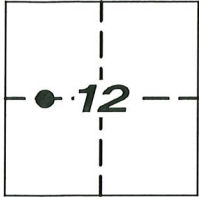
CORNER RECORD

Agency Index CR-22-242
Document Number _____

City of MANTECA

County of SAN JOAQUIN, California

Brief Legal Description INTERSECTION OF WOODWARD AVENUE AND MCKINLEY AVENUE (R1)



T.2S, R.6E

CORNER TYPE

- Government Corner
- Meander
- Rancho
- Control
- Property
- Other

Date of Survey 7-12-2021

COORDINATES (Optional)

N. _____ E. _____
 Elevation _____
 Units Metric U.S. Survey Foot
 Horizontal Datum _____
 Zone _____ Epoch Date _____
 Vertical Datum _____

- Complies with Public Resources Code §§8801-8819
- Complies with Public Resources Code §§8890-8902

PLS Act Ref: 8765(d) 8771 8773 Other:

Corner/Monument: Left as found Established Rebuilt Pre-Construction
 Found and tagged Reestablished Referenced Post-Construction

Narrative of corner identified and monument as found, set, reset, replaced, or removed:

See sheet #2 for description (s):

FOUND 3/4" IRON PIPE TAGGED LS 6406 PER (R1); SET FOUR (4) CONCRETE NAILS WITH BRASS TAG "LS 6953" AS WITNESS CORNERS; ALL AS SHOWN ON SHEET 2.

SURVEYOR'S STATEMENT

This Corner Record was prepared by me or under my direction in conformance with the Professional Land Surveyors' Act on SEPTEMBER 13, 2022

Signed [Signature] P.L.S. or R.C.E. No. 6953



COUNTY SURVEYOR'S STATEMENT

This Corner Record was received September 16, 2022

and examined and filed September 26, 2022

Signed [Signature] P.L.S. or R.C.E. No. 8657

Title County Surveyor



County Surveyor's Comment _____

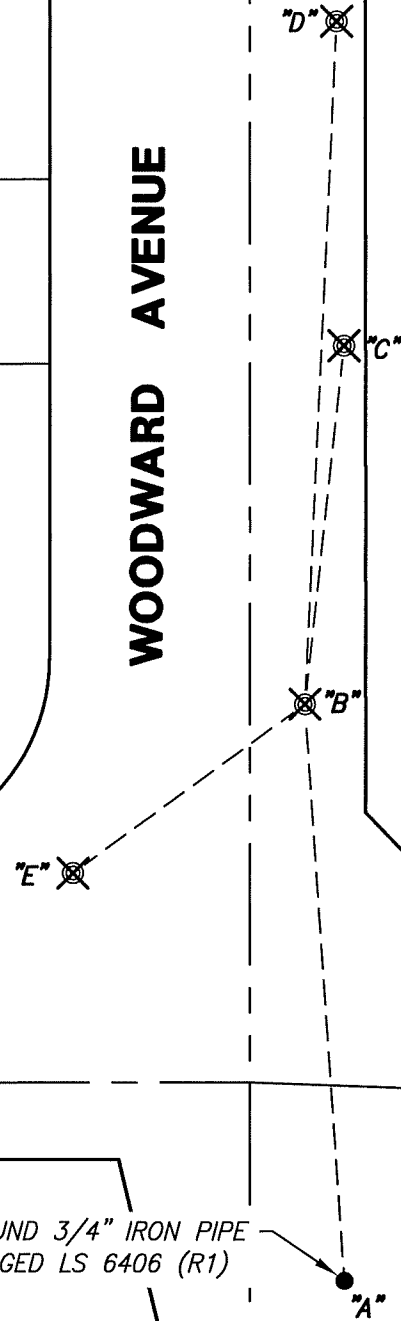
| X AND DISTANCE TABLE | | |
|----------------------|------------|-------------|
| BS-@-FS | X | FS DISTANCE |
| D-B-D | 00°00'00" | 177.716'(M) |
| D-B-C | 03°32'22" | 93.726'(M) |
| D-B-E | 231°12'17" | 74.505'(M) |
| D-B-A | 173°23'54" | 150.387'(M) |



SCALE: 1" = 60'

WOODWARD AVENUE

MCKINLEY AVENUE



LEGEND:

- ⊗ SET CONCRETE NAIL WITH BRASS TAG "LS 6953".
- FOUND MONUMENT AS NOTED.
- MP- MAPS AND PLATS
- S.J..C.R. SAN JOAQUIN COUNTY RECORDS
- (M) MEASURED DISTANCE. ALL DISTANCES ARE MEASURED
- U.O.N. UNLESS NOTED OTHERWISE.

REFERENCE:

(R1) 43-MP-158, S.J.C.R.

NOTE:

THIS CORNER RECORD DOES NOT VERIFY THIS MONUMENT TO BE IN THE CORRECT POSITION.