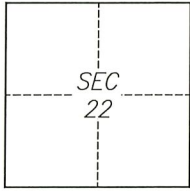


CORNER RECORD

Agency Index CR-22-240
Document Number _____

City of Stockton County of San Joaquin, California

Brief Legal Description Within Lever Boulevard, between the Intersections with Donati Circle and Donati Circle



T1N/R6E

CORNER TYPE

- Government Corner
- Meander
- Rancho
- Control
- Property
- Other

Date of Survey 08-11-2022

COORDINATES (Optional)

- N. _____ E. _____
 Elevation _____
 Units Metric U.S. Survey Foot
 Horizontal Datum _____
 Zone _____ Epoch Date _____
 Vertical Datum _____
 Complies with Public Resources Code §§8801-8819
 Complies with Public Resources Code §§8890-8902

- PLS Act Ref.: 8765(d) 8771 8773 Other:
 Corner/Monument: Left as found Established Rebuilt Pre-Construction
 Found and tagged Reestablished Referenced Post-Construction

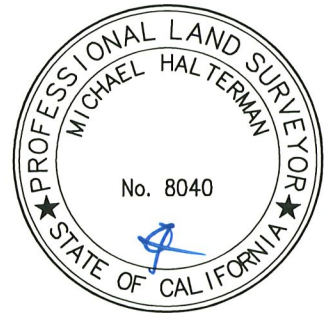
Narrative of corner identified and monument as found, set, reset, replaced, or removed:

See sheet #2 for description(s):

This Corner Record is being filed to reference the position of an existing monument, prior to a street rehabilitation project. This document is for preservation purposes only, and no attempt was made to determine the relationship to property, centerline, or right-of-way lines.

SURVEYOR'S STATEMENT

This Corner Record was prepared by me or under my direction in conformance with the Professional Land Surveyors' Act on September 9, 2022
Signed [Signature] P.L.S. or R.C.E. No. 8040

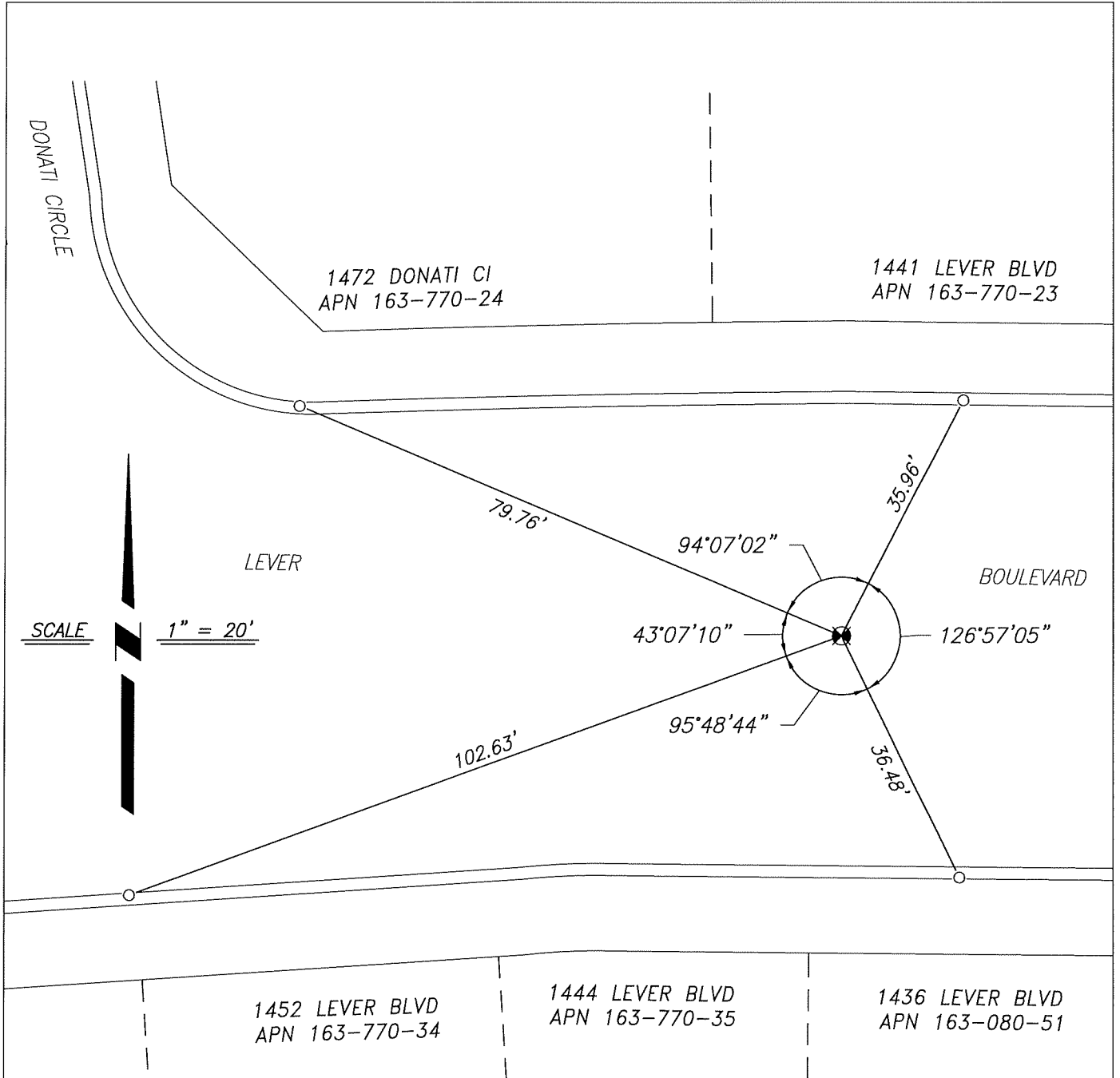


COUNTY SURVEYOR'S STATEMENT

This Corner Record was received September 12, 2022
and examined and filed September 22, 2022
Signed James E. Hart P.L.S. or R.C.E. No. 8657
Title County Surveyor



County Surveyor's Comment



REFERENCE

(A) TRACT NO. 3392 MAP IN THE CITY OF STOCKTON, FILED ON FEBRUARY 3, 2005, IN BOOK 39 OF MAPS AND PLATS, PAGE 82, SAN JOAQUIN COUNTY RECORDS.

LEGEND

⊗ FOUND MONUMENT, 1/2" REBAR, WITH CAP, STAMPED LS 7600

○ CUT CROSS ON CONCRETE AS REFERENCE POINT

APN ASSESSOR'S PARCEL NUMBER

NOTES

1. ALL REFERENCES ARE SAN JOAQUIN COUNTY RECORDS