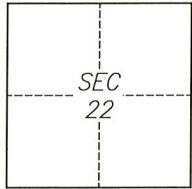


CORNER RECORD

Agency Index CR-22 239
 Document Number _____

City of Stockton County of San Joaquin, California
 Brief Legal Description Eastern Intersection of Donati Circle and Lever Boulevard



T1N/R6E

- CORNER TYPE
- Government Corner Control
 Meander Property
 Rancho Other

Date of Survey 08-11-2022

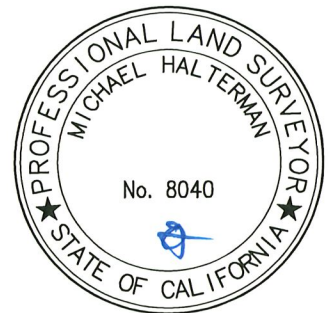
- COORDINATES (Optional)
- N. _____ E. _____
 Elevation _____
 Units Metric U.S. Survey Foot
 Horizontal Datum _____
 Zone _____ Epoch Date _____
 Vertical Datum _____
 Complies with Public Resources Code §§8801-8819
 Complies with Public Resources Code §§8890-8902

- PLS Act Ref.: 8765(d) 8771 8773 Other:
 Corner/Monument: Left as found Established Rebuilt Pre-Construction
 Found and tagged Reestablished Referenced Post-Construction

Narrative of corner identified and monument as found, set, reset, replaced, or removed:
 See sheet #2 for description(s):
 This Corner Record is being filed to reference the position of an existing monument, prior to a street rehabilitation project. This document is for preservation purposes only, and no attempt was made to determine the relationship to property, centerline, or right-of-way lines.

SURVEYOR'S STATEMENT

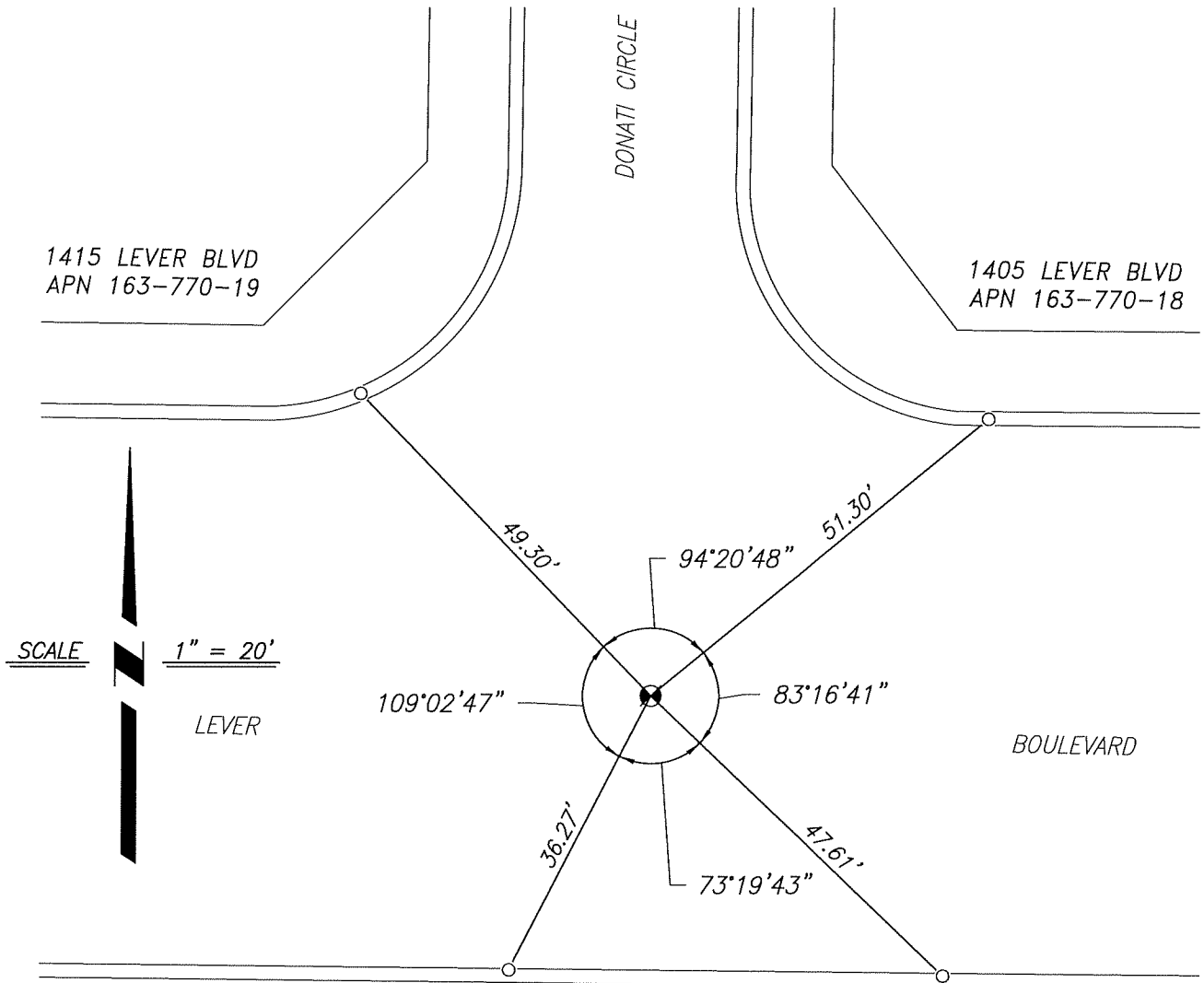
This Corner Record was prepared by me or under my direction in conformance with
 the Professional Land Surveyors' Act on September 9, 2022
 Signed [Signature] P.L.S. or R.G.E. No. 8040


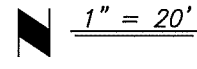


COUNTY SURVEYOR'S STATEMENT

This Corner Record was received September 12, 2022
 and examined and filed September 22, 2022.
 Signed [Signature] P.L.S. or R.G.E. No. 8657
 Title County Surveyor
 County Surveyor's Comment _____





SCALE


 1" = 20'
 LEVER

1410 LEVER BLVD
 APN 163-080-46

1404 LEVER BLVD
 APN 163-080-47

1342 LEVER BLVD
 APN 163-080-048

REFERENCE

(A) TRACT NO. 3392 MAP IN THE CITY OF STOCKTON, FILED ON FEBRUARY 3, 2005, IN BOOK 39 OF MAPS AND PLATS, PAGE 82, SAN JOAQUIN COUNTY RECORDS.

LEGEND

⊗ FOUND MONUMENT, 1/2" REBAR, WITH CAP, STAMPED LS 7600

○ CUT CROSS ON CONCRETE AS REFERENCE POINT

APN ASSESSOR'S PARCEL NUMBER

NOTES

1. ALL REFERENCES ARE SAN JOAQUIN COUNTY RECORDS