

CORNER RECORD

Agency Index

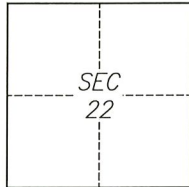
CR-22-237

Document Number

City of StocktonCounty of San Joaquin, CaliforniaBrief Legal Description Monument within Lever Boulevard near 2213 Lever Boulevard

CORNER TYPE

COORDINATES (Optional)

T1N/R6E

- ☐ Government Corner ☒ Control
☐ Meander ☐ Property
☐ Rancho ☐ Other

Date of Survey 08-11-2022

N. _____ E. _____

Elevation _____

Units ☐ Metric ☐ U.S. Survey Foot

Horizontal Datum _____

Zone _____ Epoch Date _____

Vertical Datum _____

☐ Complies with Public Resources Code §§8801-8819☐ Complies with Public Resources Code §§8890-8902

PLS Act Ref.:

☐ 8765(d)☒ 8771☐ 8773☐ Other:Corner/
Monument:☒ Left as found☐ Established☐ Rebuilt☒ Pre-Construction☐ Found and tagged☐ Reestablished☒ Referenced☐ Post-Construction

Narrative of corner identified and monument as found, set, reset, replaced, or removed:

☒ See sheet #2 for description(s):

This Corner Record is being filed to reference the position of an existing monument, prior to a street rehabilitation project. This document is for preservation purposes only, and no attempt was made to determine the relationship to property, centerline, or right-of-way lines.

SURVEYOR'S STATEMENT

This Corner Record was prepared by me or under my direction in conformance with

the Professional Land Surveyors' Act on September 9, 2022

Signed

P.L.S. or R.C.E. No. 8040

COUNTY SURVEYOR'S STATEMENT

This Corner Record was received

September 12, 2022

and examined and filed

September 22, 2022

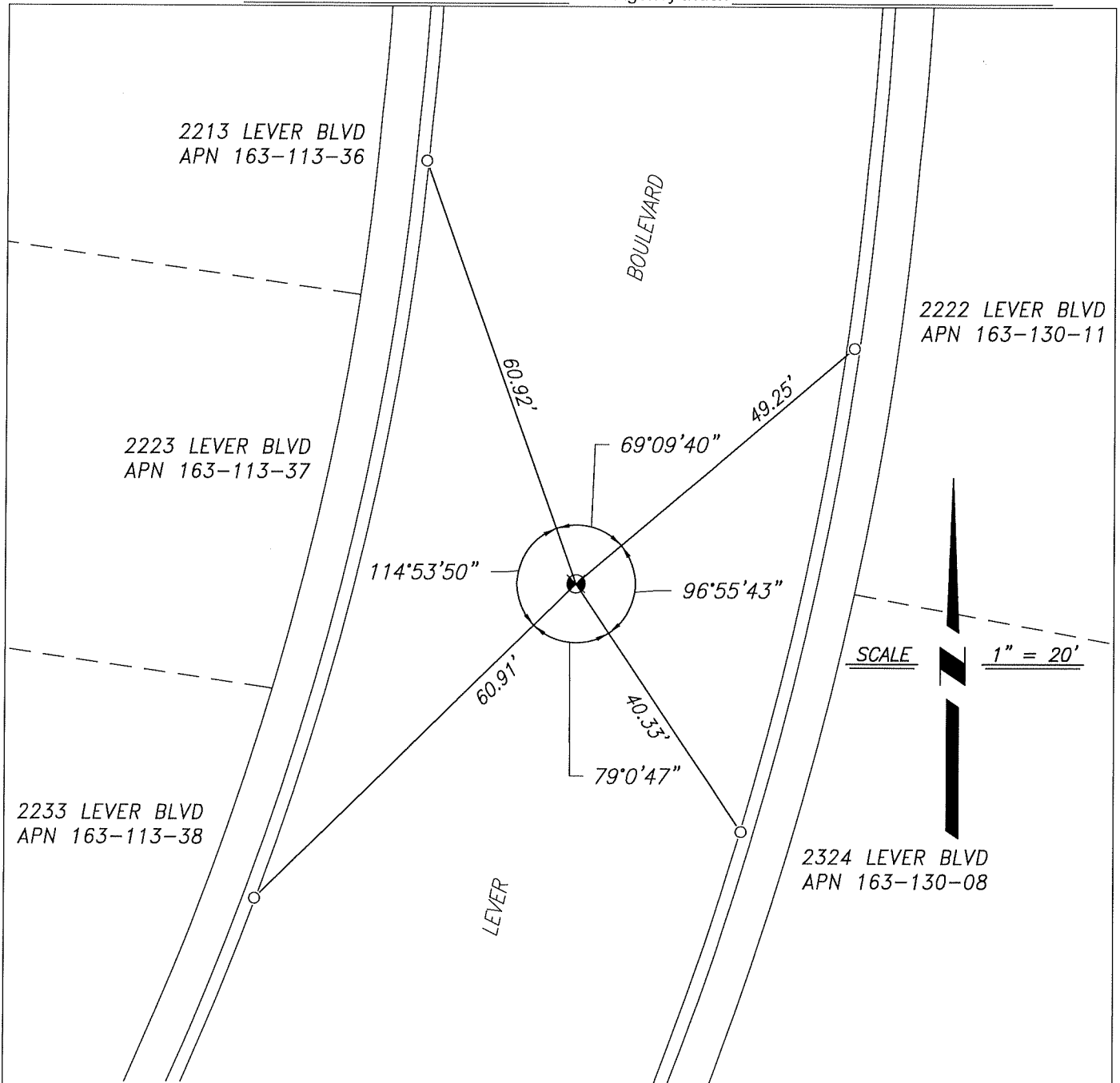
Signed

County SurveyorP.L.S. or R.C.E. No. 8657

Title

County Surveyor's Comment





REFERENCE

(A) PARCEL MAP IN THE CITY OF STOCKTON, FILED ON MAY 12, 1993, IN BOOK 19 OF PARCEL MAPS, PAGE 24, SAN JOAQUIN COUNTY RECORDS.

LEGEND

⊗ FOUND MONUMENT, $\frac{1}{2}$ " PIN, IN WELL

○ CUT CROSS ON CONCRETE CURB, AS REFERENCE POINT

APN ASSESSOR'S PARCEL NUMBER

NOTES

1. ALL REFERENCES ARE SAN JOAQUIN COUNTY RECORDS