

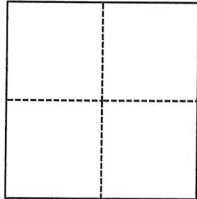
CORNER RECORD

Agency Index CR-22-235
Document Number _____

City of STOCKTON County of SAN JOAQUIN, California
Brief Legal Description LOT 7 & POR. LOT 6 PER M&P 39-67. POR. SEC. 28, T.1N., R.7E., MDB&M

CORNER TYPE

COORDINATES (Optional)



- Government Corner
- Meander
- Rancho
- Control
- Property
- Other

N. _____ E. _____
 Elevation _____
 Units Metric U.S. Survey Foot
 Horizontal Datum _____
 Zone _____ Epoch Date _____
 Vertical Datum _____
 Complies with Public Resources Code §§8801-8819
 Complies with Public Resources Code §§8890-8902

Date of Survey MARCH 3, 2020

- PLS Act Ref.: 8765(d) 8771 8773 Other:
- Corner/Monument: Left as found Established Rebuilt Pre-Construction
 Found and tagged Reestablished Referenced Post-Construction

Narrative of corner identified and monument as found, set, reset, replaced, or removed:
 See sheet #2 for description(s):

PRE-CONSTRUCTION CORNER RECORD. THIS DOCUMENT IS FOR THE PURPOSE OF PRESERVING AND ESTABLISHING TIES TO EXISTING MONUMENTS IN THE AREA OF NEW CONSTRUCTION OF IMPROVEMENTS, AS SHOWN ON BOOK 39 OF MAPS AND PLATS, PAGE 67, SAN JOAQUIN COUNTY RECORDS.

SURVEYOR'S STATEMENT

This Corner Record was prepared by me or under my direction in conformance with
 the Professional Land Surveyors' Act on August 19, 2022
 Signed *Zachary C. Wong* P.L.S. or R.C.E. No. L.S. 7600



COUNTY SURVEYOR'S STATEMENT

This Corner Record was received September 2, 2022
 and examined and filed September 12, 2022
 Signed *James E. Hart* P.L.S. or R.C.E. No. 8657
 Title County Surveyor



County Surveyor's Comment



WONG ENGINEERS, INC.

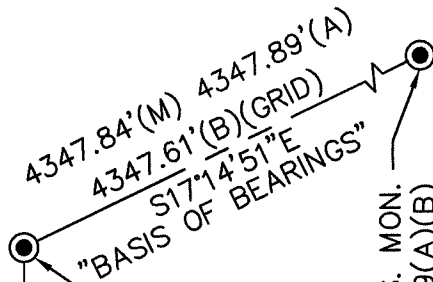
PLANNING ENGINEERING SURVEYING
4578 FEATHER RIVER DRIVE, SUITE A
STOCKTON, CALIFORNIA (209) 476-0011
AUGUST 19, 2022 2 OF 2

REFERENCES:

- (A) M&P 39-67, S.J.C.R.
- (B) RS 35-5, S.J.C.R.

CARPENTER ROAD

C.O.S. MON.
5S-16(A)(B)
N=2159968.65
E=6350752.32
(GRID)



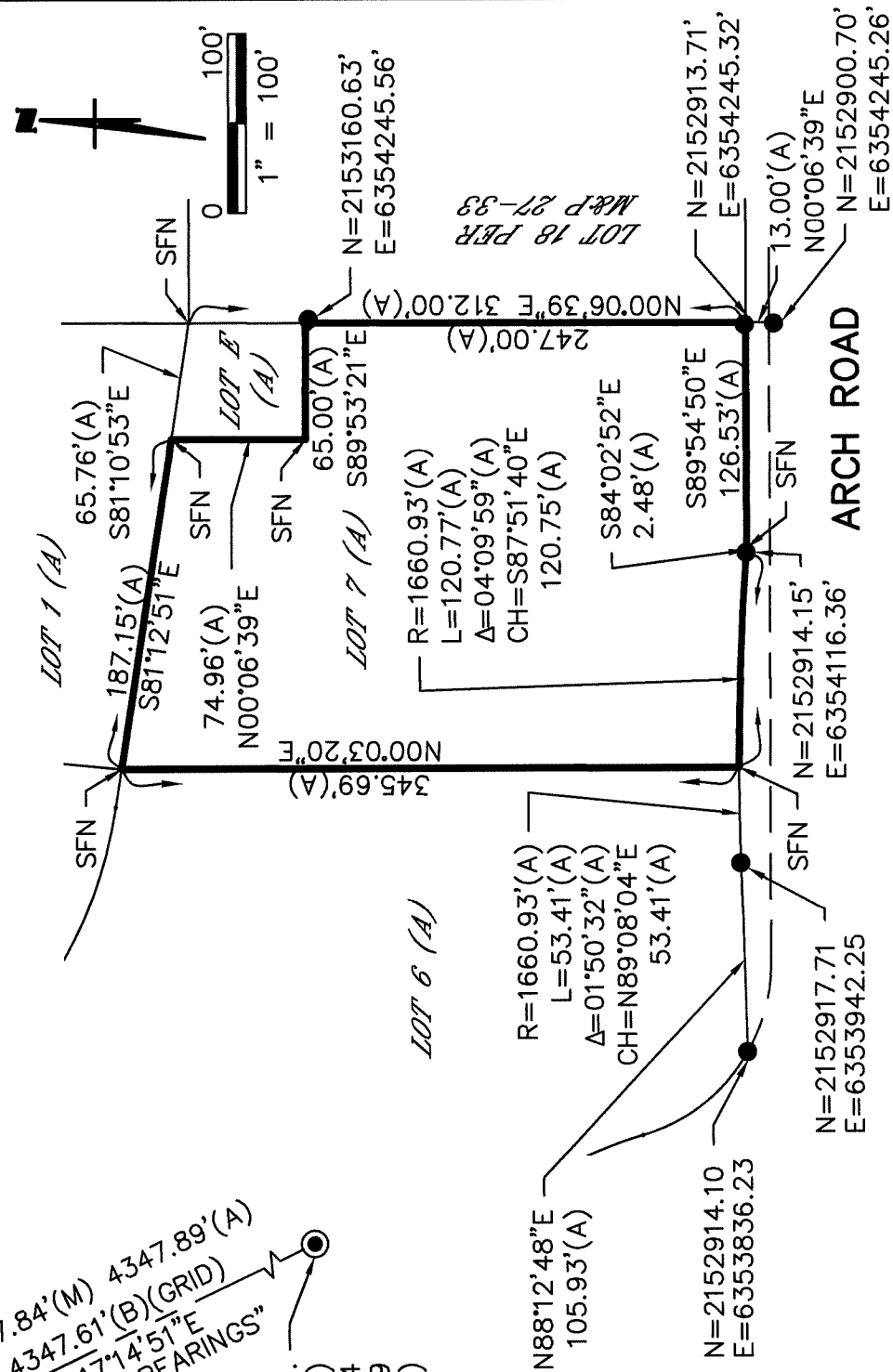
C.O.S. MON.
3S-9(A)(B)
N=2155816.54
E=6352041.39
(GRID)

DESCRIPTION:

THIS DOCUMENT IS FOR THE PURPOSE OF PRESERVING AND ESTABLISHING TIES TO EXISTING MONUMENTS. RETRACEMENT SURVEY WILL DETERMINE VALIDITY OF MONUMENT LOCATIONS. SET MONUMENT TIES TO EXISTING MONUMENTS.

LEGEND:

- C.O.S. CITY OF STOCKTON
- FD. FOUND
- I. IRON
- M&P MAPS & PLATS, BOOK-PAGE MONUMENT
- MON. MONUMENT
- RS RECORD OF SURVEY, BOOK-PAGE SEARCHED, FOUND NOTHING
- SFN SAN JOAQUIN COUNTY RECORDS
- SJCR FD. 3/4" I.PIN (A)
- C.O.S. MONUMENT BOX (B)
- ⊙ FD. C.O.S. MONUMENT BOX (B)



NOTES:

ALL BEARINGS AND DISTANCES SHOWN ARE FOR REFERENCE ONLY.
FOUND MONUMENTS HAVE GROUND COORDINATES.
C.O.S. MONUMENTS HAVE GRID COORDINATES.

LOT 18 PER
M&P 27-83