

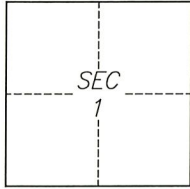
CORNER RECORD

Agency Index CR-22 232
Document Number _____

City of Lodi County of San Joaquin, California
Brief Legal Description Alley on S. Central Avenue, between Walnut Street and Oak Street

CORNER TYPE

COORDINATES (Optional)



T3N/R6E

- Government Corner
- Meander
- Rancho
- Control
- Property
- Other

Date of Survey 2022-06-21

N. _____ E. _____
 Elevation _____
 Units Metric U.S. Survey Foot
 Horizontal Datum _____
 Zone _____ Epoch Date _____
 Vertical Datum _____
 Complies with Public Resources Code §§8801-8819
 Complies with Public Resources Code §§8890-8902

PLS Act Ref.: 8765(d) 8771 8773 Other:
 Corner/Monument: Left as found Established Rebuilt Pre-Construction
 Found and tagged Reestablished Referenced Post-Construction

Narrative of corner identified and monument as found, set, reset, replaced, or removed:
 See sheet #2 for description(s):

SURVEYOR'S STATEMENT

This Corner Record was prepared by me or under my direction in conformance with
 the Professional Land Surveyors' Act on August 18, 2022
 Signed [Signature] P.L.S. or R.C.E. No. 8040

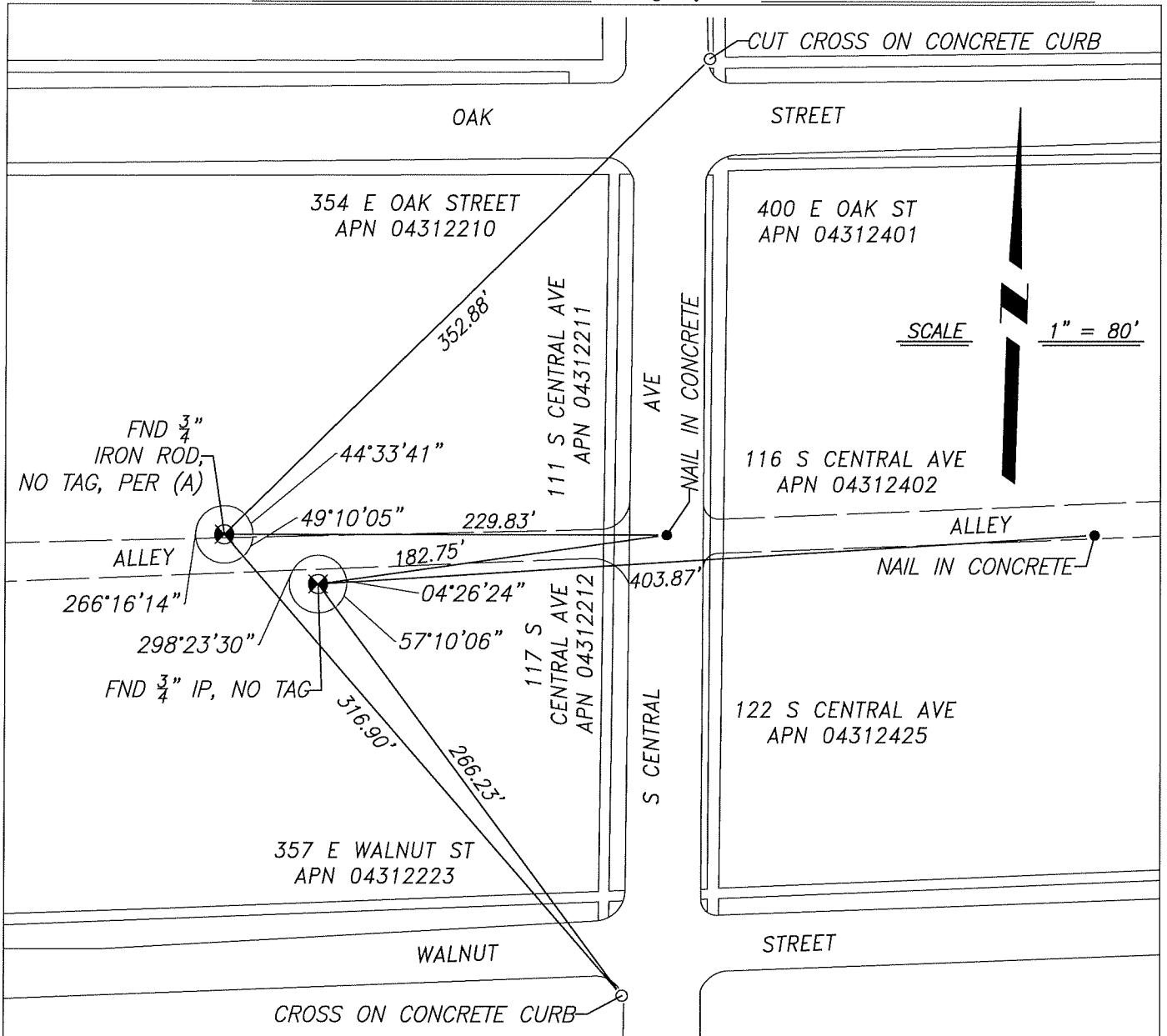


COUNTY SURVEYOR'S STATEMENT

This Corner Record was received August 24, 2022
 and examined and filed September 8, 2022
 Signed James E. Hart P.L.S. or R.C.E. No. 8657
 Title County Surveyor



County Surveyor's Comment



REFERENCE

(A) RECORD OF SURVEY IN THE CITY OF LODI, FILED ON DECEMBER 15, 1989, IN BOOK 30 OF SURVEYS, PAGE 197, SAN JOAQUIN COUNTY RECORDS.

LEGEND

- ⊗ FOUND MONUMENT, 3/4" IRON ROD WITHOUT TAG
- CUT CROSS ON CONCRETE AS REFERENCE POINT
- NAIL IN ASPHALT AS REFERENCE POINT

NOTES

1. ALL REFERENCES ARE SAN JOAQUIN COUNTY RECORDS
2. FOUND MONUMENT NOT OF RECORD