

# CORNER RECORD

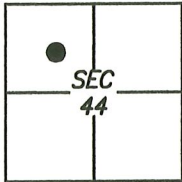
Agency Index CR-22-229

Document Number \_\_\_\_\_

City of STOCKTON

County of SAN JOAQUIN, California

Brief Legal Description FOUND MONUMENT ON WEST SIDE OF NORTH F STREET 115± NORTH OF THE INTERSECTION OF FINLAND AVENUE AND F STREET.



C.M. WEBER  
GRANT

### CORNER TYPE

- Government Corner  Control   
 Meander  Property   
 Rancho  Other

Date of Survey 2021/06/15

### COORDINATES (Optional)

- N. \_\_\_\_\_ E. \_\_\_\_\_  
 Elevation \_\_\_\_\_  
 Units Metric  U.S. Survey Foot   
 Horizontal Datum \_\_\_\_\_  
 Zone \_\_\_\_\_ Epoch Date \_\_\_\_\_  
 Vertical Datum: \_\_\_\_\_

- Complies with Public Resources Code §§8801-8819  
 Complies with Public Resources Code §§8890-8902

PLS Act Ref.:  8765(d)  8771  8773

Other: \_\_\_\_\_

Corner/Monument:  Left as found  Established  Rebuilt  Pre-Construction  
 Found and tagged  Reestablished  Referenced  Post-Construction

Narrative of corner identified and monument as found and set or reset:  
 See sheet #2 for description(s):

### SURVEYOR'S STATEMENT

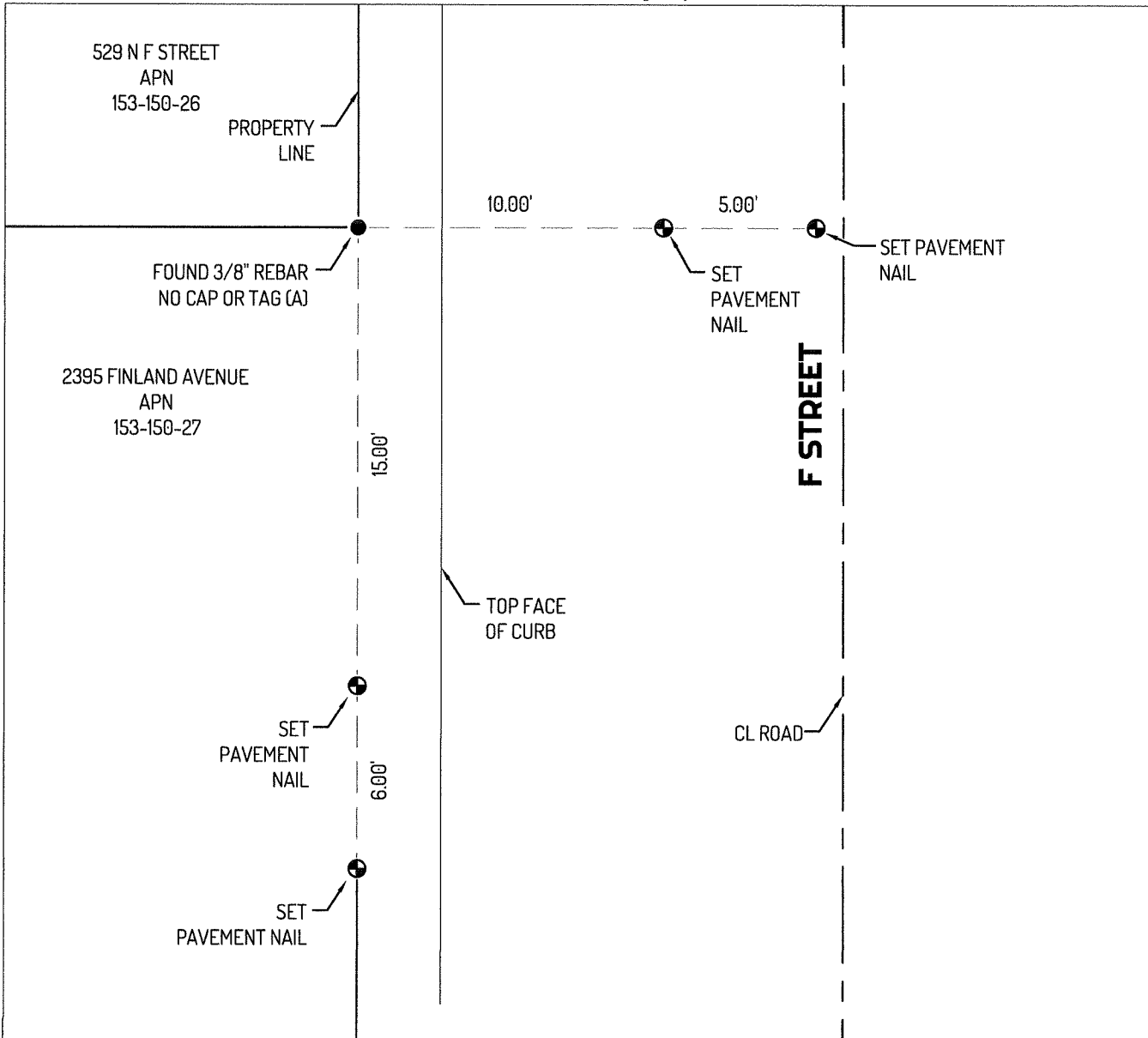
This Corner Record was prepared by me or under my direction in conformance with  
 the Professional Land Surveyor's Act on 17 JUNE, 2021.  
 Signed [Signature] P.L.S. or R.C.E. No.: 8489



### COUNTY SURVEYOR'S STATEMENT

This Corner Record was received August 12, 2022  
 and examine and filed September 1, 2022.  
 Signed [Signature] P.L.S. or R.C.E. No.: 8657  
 Title County Surveyor  
 County Surveyor's Comment \_\_\_\_\_





**LEGEND**

- FOUND 3/8" REBAR NO CAP OR TAG, PER (A)
- SET CONTROL POINT
- 435 REFERENCE STREET ADDRESS
- APN ASSESSOR'S PARCEL NUMBER

**REFERENCES**

- (A) MONUMENT NOT OF RECORD

**LINETYPES**

- — — — — CENTERLINE
- CONCRETE CURB
- PROPERTY LINE
- — — — — TIE LINE

