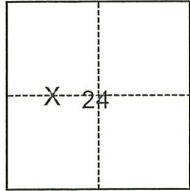


CORNER RECORD

Agency Index CR-22-227
 Document Number _____

City of _____ County of San Joaquin, California
 Brief Legal Description Lot 21 of "Alling Tract", M.&P. 5-42, S.J.C.R.

CORNER TYPE



- Government Corner Control
 Meander Property
 Rancho Other

Date of Survey July 14, 2022

T.2N., R.7E., M.D.B.&M.

COORDINATES (Optional)

N. _____ E. _____
 Elevation _____
 Units Metric U.S. Survey Foot
 Horizontal Datum _____
 Zone _____ Epoch Date _____
 Vertical Datum _____
 Complies with Public Resources Code §§8801-8819
 Complies with Public Resources Code §§8890-8902

PLS Act Ref.: 8765(d) 8771 8773 Other:
 Corner/
 Monument: Left as found Established Rebuilt Pre-Construction
 Found and tagged Reestablished Referenced Post-Construction

Narrative of corner identified and monument as found, set, reset, replaced, or removed:
 See sheet #2 for description(s):

SURVEYOR'S STATEMENT

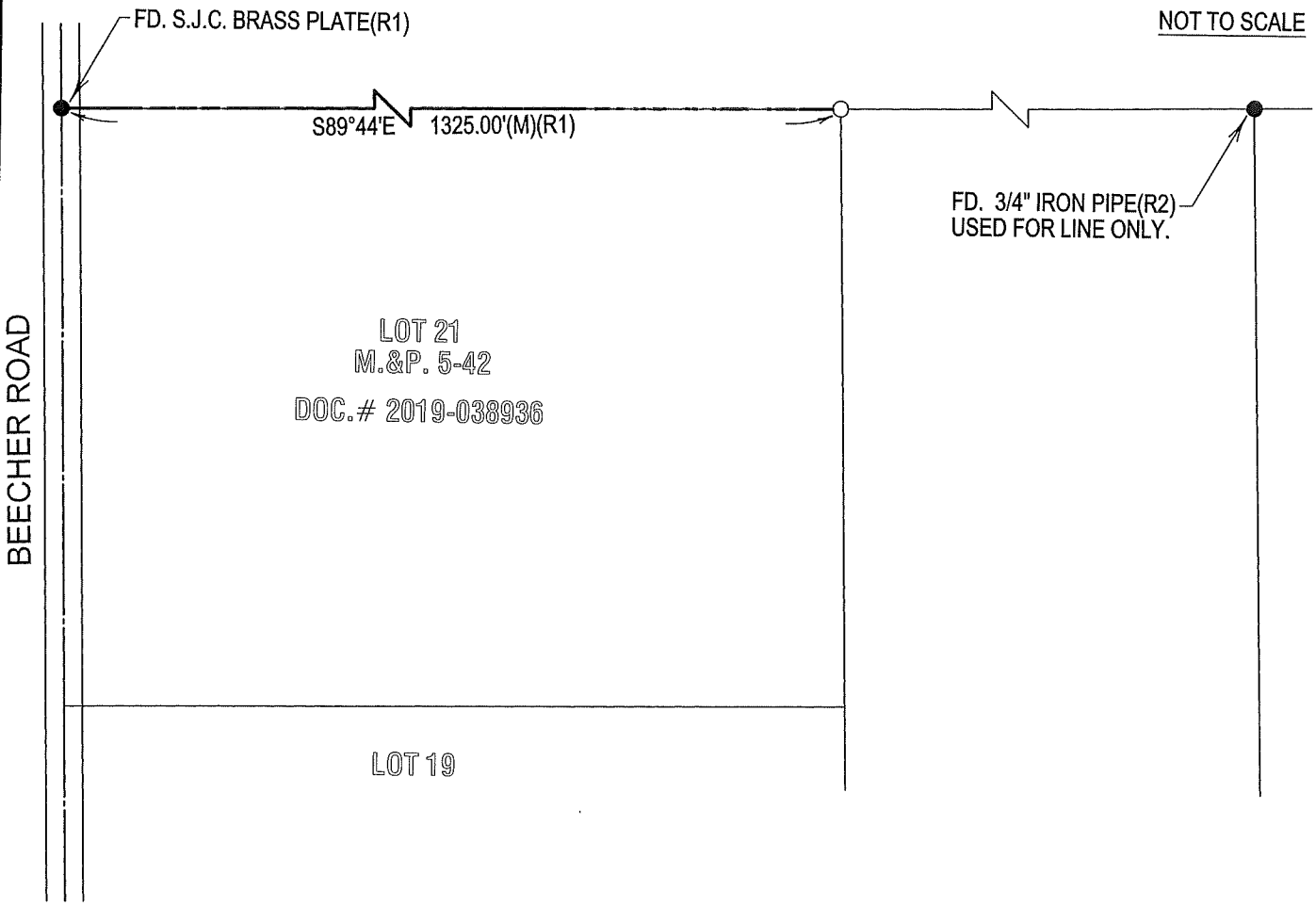
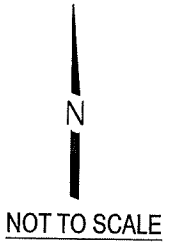
This Corner Record was prepared by me or under my direction in conformance with
 the Professional Land Surveyors' Act on August 18, 2022
 Signed Joe Murphy (P.L.S.) or R.C.E. No. 7269



COUNTY SURVEYOR'S STATEMENT

This Corner Record was received August 19, 2022
 and examined and filed August 30, 2022
 Signed James E. Hart P.L.S. or R.C.E. No. 8657
 Title County Surveyor
 County Surveyor's Comment _____





LEGEND

- FD. FOUND
- S.J.C.R. SAN JOAQUIN COUNTY RECORDS
- M.&P. MAPS & PLATS
- (M) MEASURED
- DOC.# DOCUMENT NUMBER
- I.R. IRON ROD
- MON. MONUMENT
- S.J.C. SAN JOAQUIN COUNTY
- R.S. RECORD OF SURVEY

REFERENCES

- (R1) R.S. 17-100, S.J.C.R.
- (R2) R.S. 9-44, S.J.C.R.

- SET 3/4" X 30" IRON ROD
CAPPED "LS 7269" OR AS NOTED
- FOUND MONUMENT
AS NOTED