

CORNER RECORD

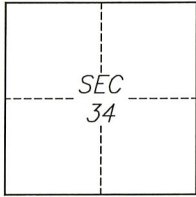
Agency Index CR-22-226

Document Number _____

City of Lathrop

County of San Joaquin, California

Brief Legal Description Intersection of Golden Spike Trail and Brookhurst Boulevard



T1S/R6E

CORNER TYPE

- Government Corner Control
 Meander Property
 Rancho Other

Date of Survey 2022-07-02

COORDINATES (Optional)

N. _____ E. _____

Elevation _____

Units Metric U.S. Survey Foot

Horizontal Datum _____

Zone _____ Epoch Date _____

Vertical Datum _____

Complies with Public Resources Code §§8801-8819

Complies with Public Resources Code §§8890-8902

PLS Act Ref.: 8765(d) 8771 8773 Other:

Corner/ Left as found Established Rebuilt Pre-Construction

Monument: Found and tagged Reestablished Referenced Post-Construction

Narrative of corner identified and monument as found, set, reset, replaced, or removed:

See sheet #2 for description(s):

SURVEYOR'S STATEMENT

This Corner Record was prepared by me or under my direction in conformance with the Professional Land Surveyors' Act on August 12, 2022

Signed [Signature] P.L.S. or R.C.E. No. 8040



COUNTY SURVEYOR'S STATEMENT

This Corner Record was received August 17, 2022

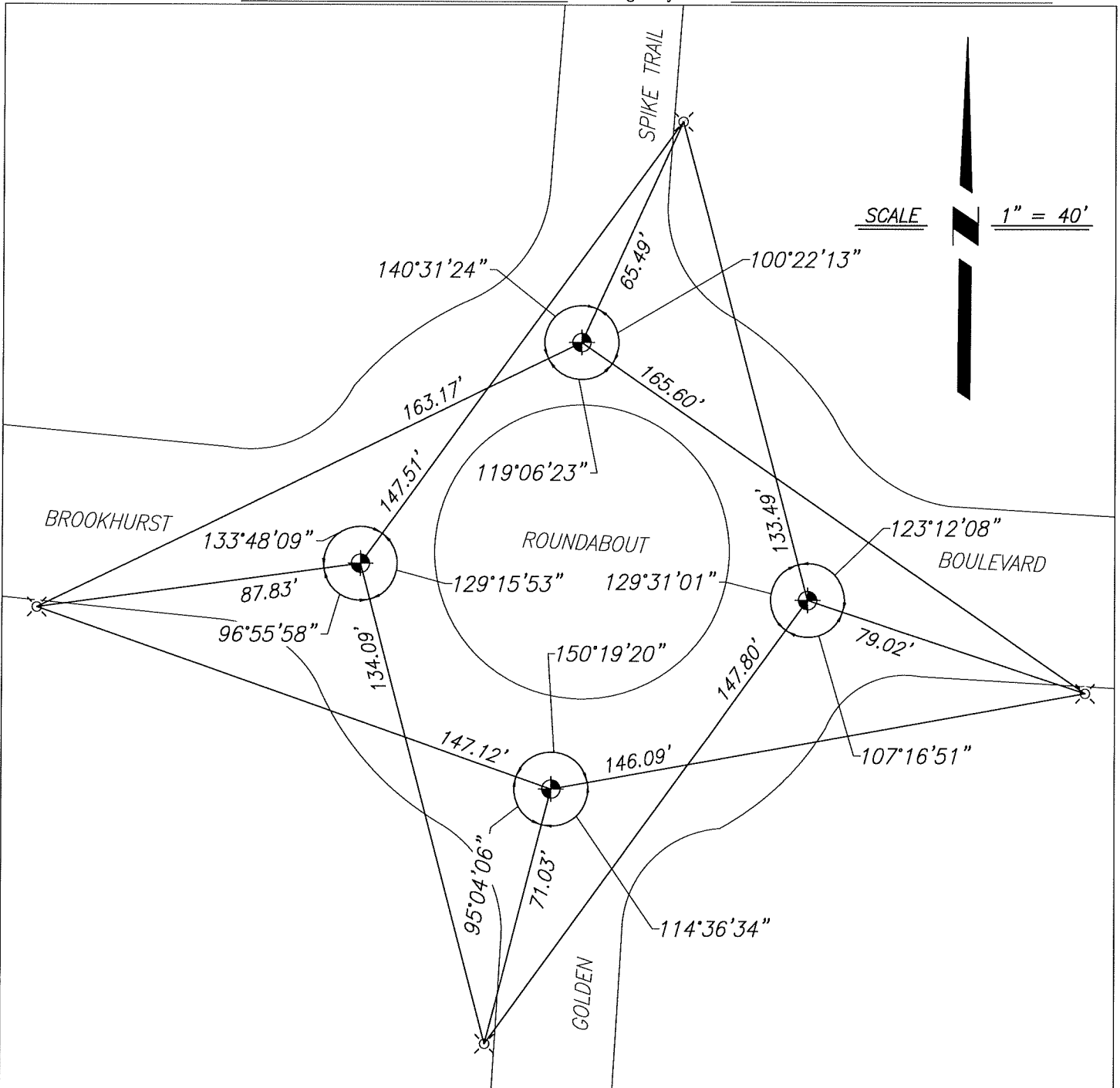
and examined and filed August 23, 2022

Signed James E. Hart P.L.S. or R.C.E. No. 8657

Title County Surveyor

County Surveyor's Comment




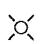


SCALE 1" = 40'

REFERENCE

- (A) PARCEL MAP 03-03-PM, FILED FOR RECORD APRIL 5, 2004, IN BOOK 23 OF PARCEL MAPS AT PAGE 19, SAN JOAQUIN COUNTY RECORDS.
- (B) TRACT NO. 3379, FILED FOR RECORD JULY 1, 2004, IN BOOK 39 OF MAPS & PLATS AT PAGE 22, SAN JOAQUIN COUNTY RECORDS.

LEGEND

-  FOUND MONUMENT, 2 1/2" BRASS DISC, STAMPED LS 5412, PER (B)
-  SET CUT CROSS ON CONCRETE CURB AS REFERENCE POINT

NOTES

- 1. ALL REFERENCES ARE SAN JOAQUIN COUNTY RECORDS