

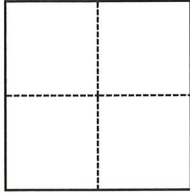
CORNER RECORD

Agency Index CR-22-221
Document Number _____

City of Manteca County of San Joaquin, California
Brief Legal Description Airport Way & Hastings Dr in Sec 30, T1S, R7E, M.D.B.M.

CORNER TYPE

COORDINATES (Optional)



- Government Corner
- Meander
- Rancho
- Control
- Property
- Other

Date of Survey July 6, 2022

N. _____ E. _____
 Elevation _____
 Units Metric U.S. Survey Foot
 Horizontal Datum _____
 Zone _____ Epoch Date _____
 Vertical Datum _____
 Complies with Public Resources Code §§8801-8819
 Complies with Public Resources Code §§8890-8902

- PLS Act Ref.: 8765(d) 8771 8773 Other:
- Corner/Monument: Left as found Established Rebuilt Pre-Construction
 Found and tagged Reestablished Referenced Post-Construction

Narrative of corner identified and monument as found, set, reset, replaced, or removed:
 See sheet #2 for description(s):

SURVEYOR'S STATEMENT

This Corner Record was prepared by me or under my direction in conformance with
 the Professional Land Surveyors' Act on July 28, 2022.

Signed Douglas F. Banks P.L.S. or R.C.E. No. 8159



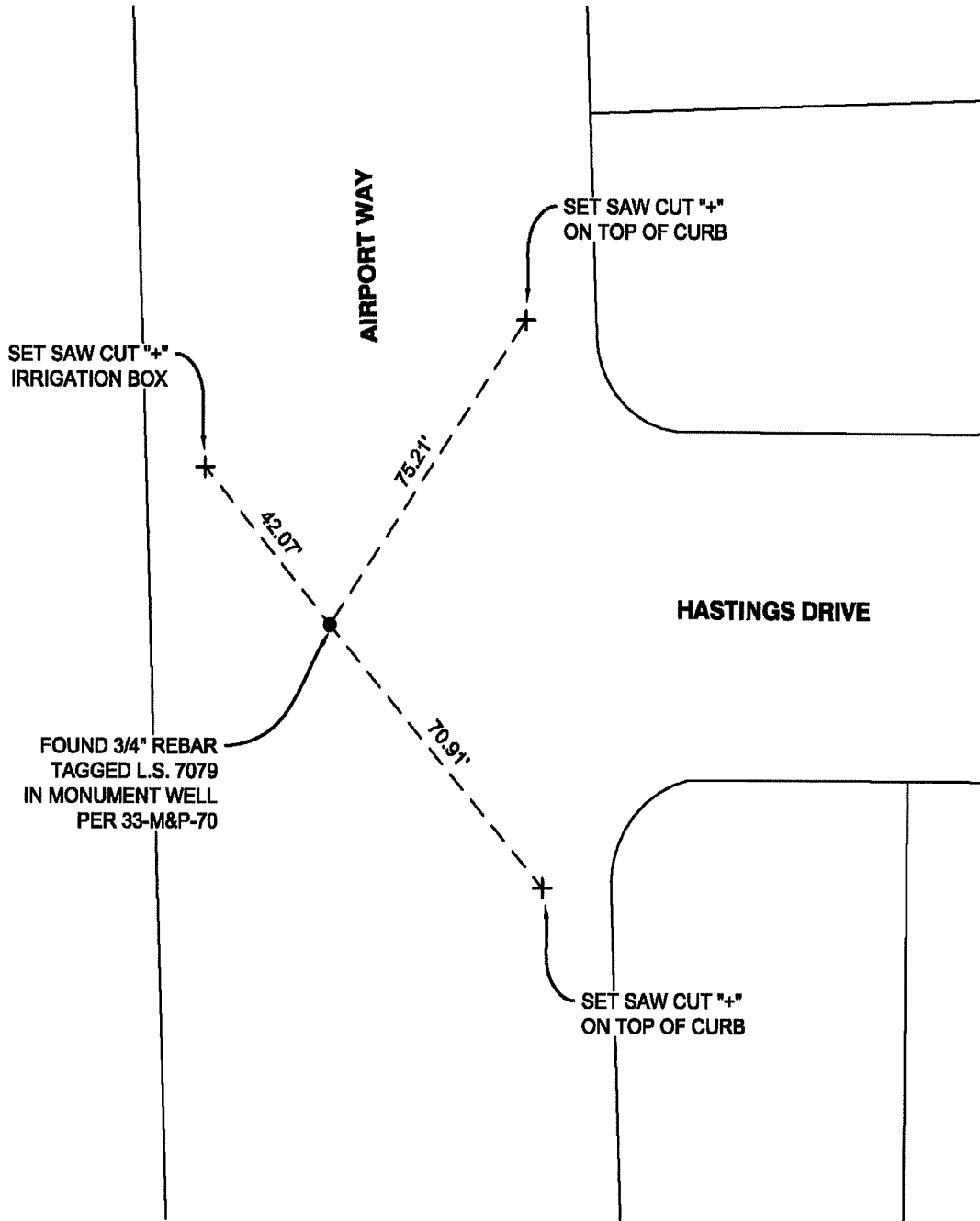
COUNTY SURVEYOR'S STATEMENT

This Corner Record was received August 3, 2022
 and examined and filed August 18, 2022.

Signed James E. Hart P.L.S. or R.C.E. No. 8657
 Title County Surveyor

County Surveyor's Comment





NOTES:

- FOUND MONUMENT AS NOTED
- M&P- MAPS AND PLATS, BOOK, PAGE, SAN JOAQUIN COUNTY RECORDS
- + SET SAW CUT "+" AS NOTED



NOT TO SCALE