

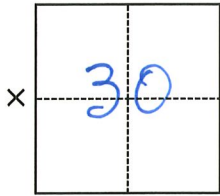
CORNER RECORD

Agency Index CR-22-220
Document Number _____

City of Manteca County of San Joaquin, California
Brief Legal Description Airport Way & Northgate Dr at West 1/4 corner Sec 30, T1S, R7E, M.D.B.M.

CORNER TYPE

COORDINATES (Optional)



- Government Corner
- Meander
- Rancho
- Control
- Property
- Other

Date of Survey July 6, 2022

N. _____ E. _____
 Elevation _____
 Units Metric U.S. Survey Foot
 Horizontal Datum _____
 Zone _____ Epoch Date _____
 Vertical Datum _____
 Complies with Public Resources Code §§8801-8819
 Complies with Public Resources Code §§8890-8902

- PLS Act Ref.: 8765(d) 8771 8773 Other:
- Corner/Monument: Left as found Established Rebuilt Pre-Construction
 Found and tagged Reestablished Referenced Post-Construction

Narrative of corner identified and monument as found, set, reset, replaced, or removed:

See sheet #2 for description(s):



SURVEYOR'S STATEMENT

This Corner Record was prepared by me or under my direction in conformance with the Professional Land Surveyors' Act on July 28, 2022.

Signed Douglas F. Banks P.L.S. or R.C.E. No. 8159

COUNTY SURVEYOR'S STATEMENT

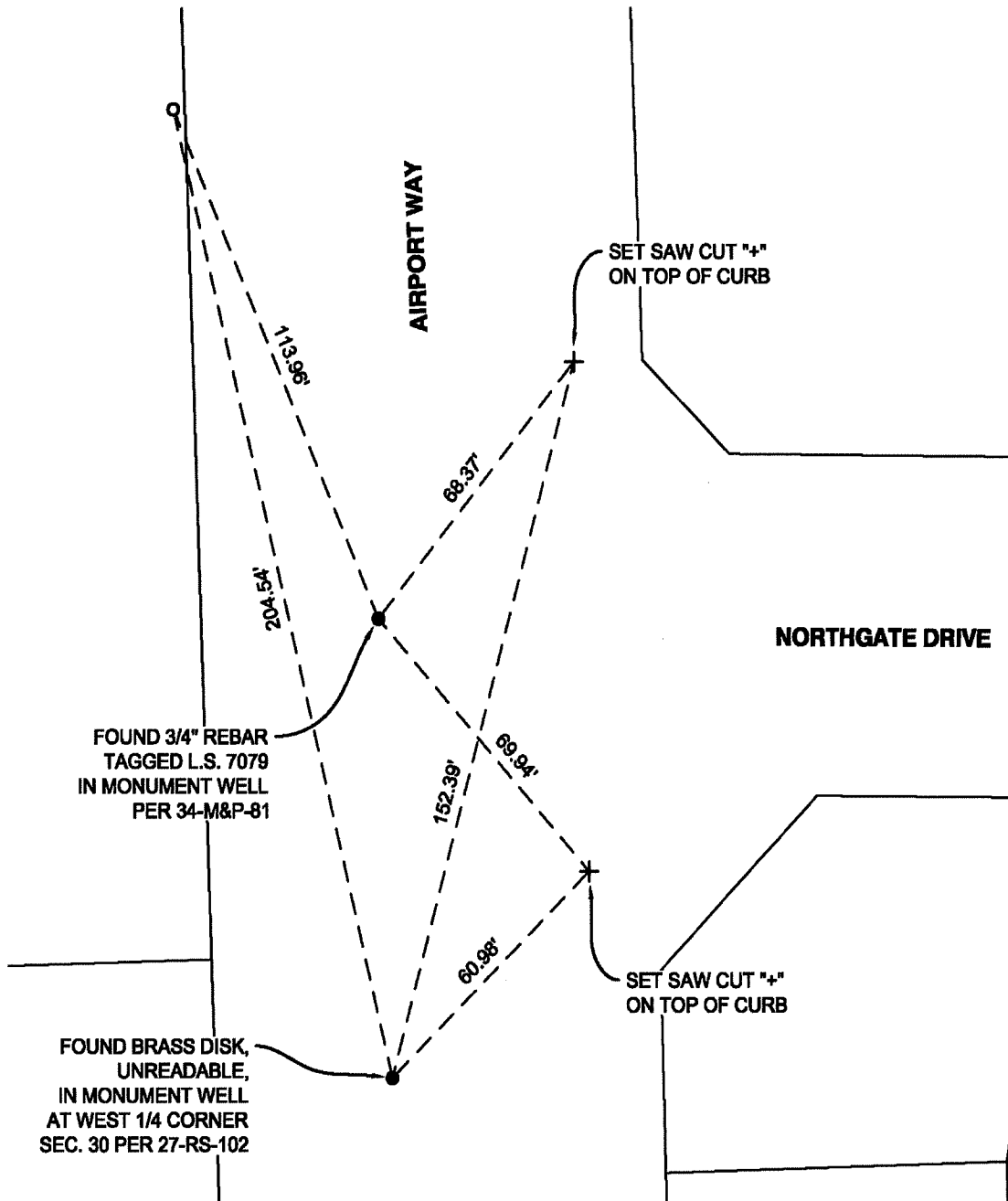
This Corner Record was received August 25, 2022 and examined and filed September 8, 2022.

Signed James E. Hart P.L.S. or R.C.E. No. 8657

Title County Surveyor

County Surveyor's Comment





NOTES:

- FOUND MONUMENT AS NOTED
- SET 3/4" IRON PIPE WITH PLASTIC CAP, STAMPED L.S. 8159
- + SET SAW CUT "+" AS NOTED
- M&P- MAPS AND PLATS, BOOK, PAGE, SAN JOAQUIN COUNTY RECORDS
- RS- RECORD OF SURVEY, BOOK, PAGE, SAN JOAQUIN COUNTY RECORDS



NOT TO SCALE